

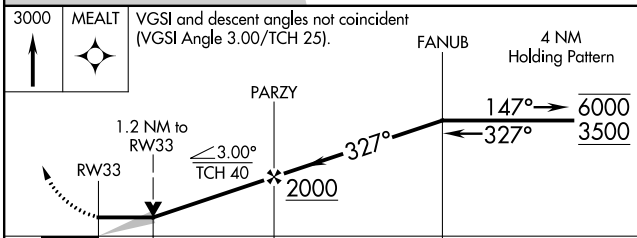
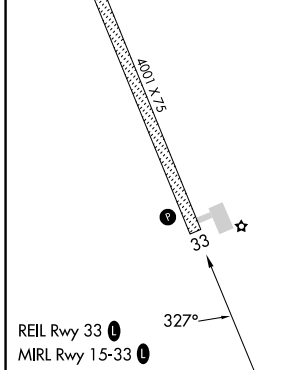
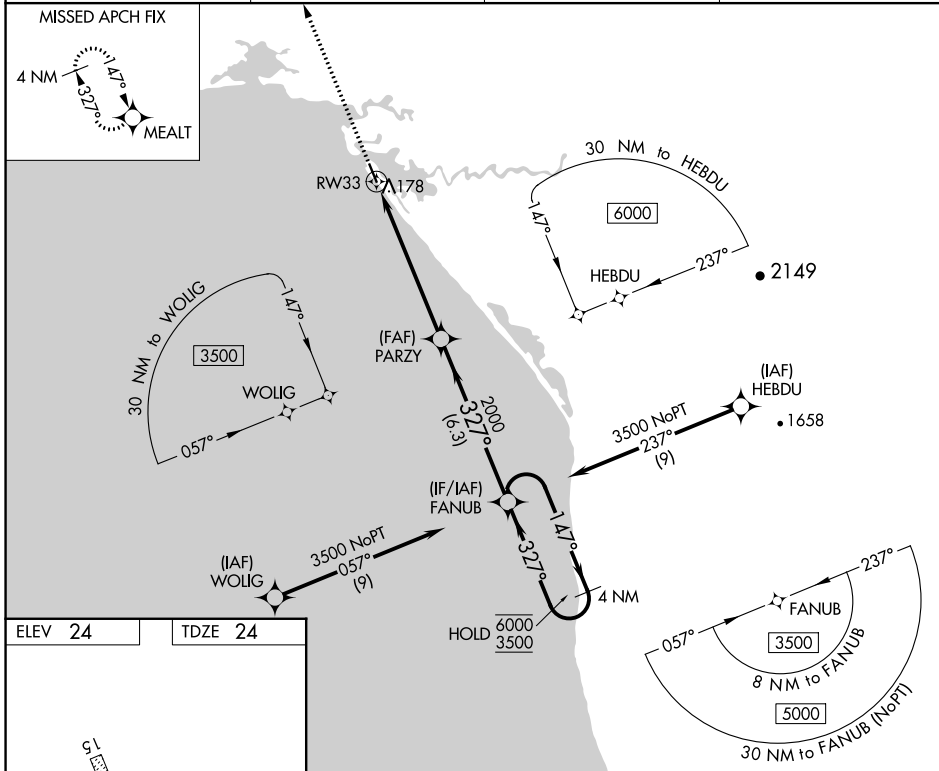
APP CRS	Rwy Idg	<b>4001</b>
<b>327°</b>	TDZE	<b>24</b>
	Apt Elev	<b>24</b>

# RNAV (GPS) RWY 33

SHAKTOOLIK (2C7) (PFSH)

RNP APCH - GPS.		MISSED APPROACH: Climb to 3000 direct MEALT and hold.
<p><b>▽</b> When local altimeter setting not received, use Unalakleet altimeter setting and increase all MDA 80 feet and increase LNAV Cat C and D and Circling Cat D visibility ½ SM.</p>		

AWOS-3P <b>124.175</b>	ANCHORAGE CENTER <b>135.7 335.5</b>	NOME RADIO <b>122.3</b>	UNICOM <b>122.8 (CTAF) 0</b>
---------------------------	--	----------------------------	---------------------------------



3000	MEALT	VGSIs and descent angles not coincident (VGSi Angle 3.00/TCH 25).			
		PARZY		FANUB 4 NM Holding Pattern	
		1.2 NM	4.9 NM	6.3 NM	
CATEGORY	A	B	C	D	
LNAV MDA	440-1	416 (500-1)	440-1½	416 (500-1½)	
<b>C</b> CIRCLING	480-1	456 (500-1)	480-1½ 456 (500-1½)	740-2¼ 716 (800-2¼)	

AK, 31 OCT 2024 to 26 DEC 2024

AK, 31 OCT 2024 to 26 DEC 2024