

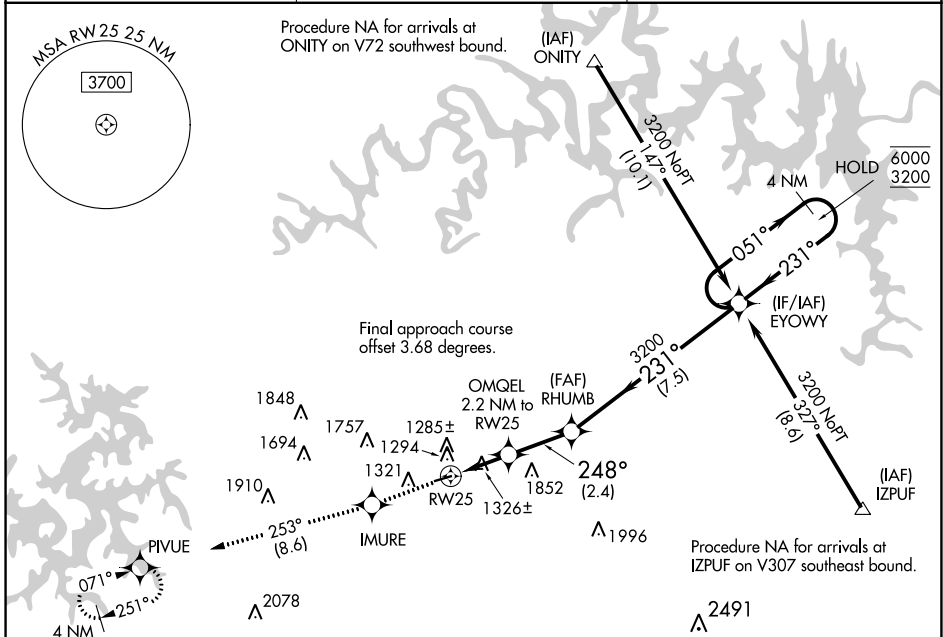
WAAS CH <b>86442</b> <b>W25A</b>	APP CRS <b>248°</b>	Rwy Idg TDZE <b>1206</b> Apt Elev <b>1206</b>	<b>3555</b>
--	------------------------	---	-------------

# RNAV (GPS) RWY 25

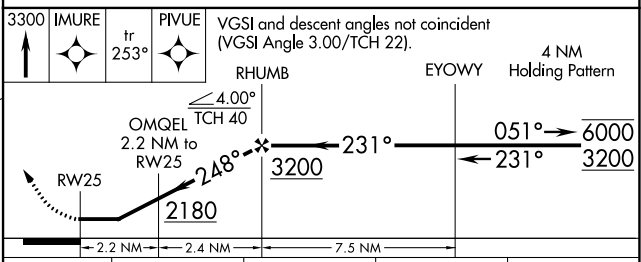
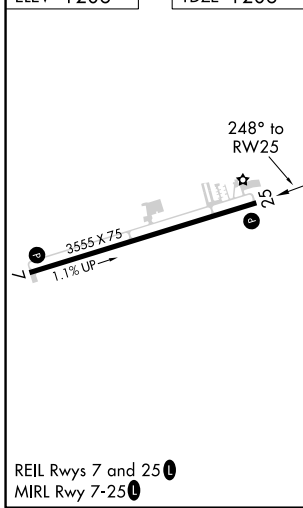
CARROLL COUNTY (4M1)

RNP APCH-GPS.	MISSED APPROACH: Climb to 3300 direct IMURE and on track 253° to PIVUE and hold.
<p>▼ Rwy 25 helicopter visibility reduction below 3/4 SM NA. Use Branson altimeter setting; when not received, use Rogers altimeter setting and increase all MDA 20 feet. Circling Rwy 7 NA at night.</p> <p>▲ NA</p>	

BBG AWOS-3 <b>124.625</b>	RAZORBACK APPROACH* <b>126.6 305.2</b>	CTAF <b>122.90</b>
------------------------------	---	-----------------------



ELEV 1206	TDZE 1206
-----------	-----------



CATEGORY	A	B	C	D
LP MDA	1660-1	454 (500-1)		NA
LNAV MDA	1660-1	454 (500-1)		NA
CIRCLING	1700-1 494 (500-1)	1980-1 774 (800-1)		NA

SC-1, 28 NOV 2024 to 26 DEC 2024

SC-1, 28 NOV 2024 to 26 DEC 2024