

APP CRS	Rwy Idg	N/A
333°	TDZE	N/A
	Apt Elev	63

# RNAV (GPS)-A

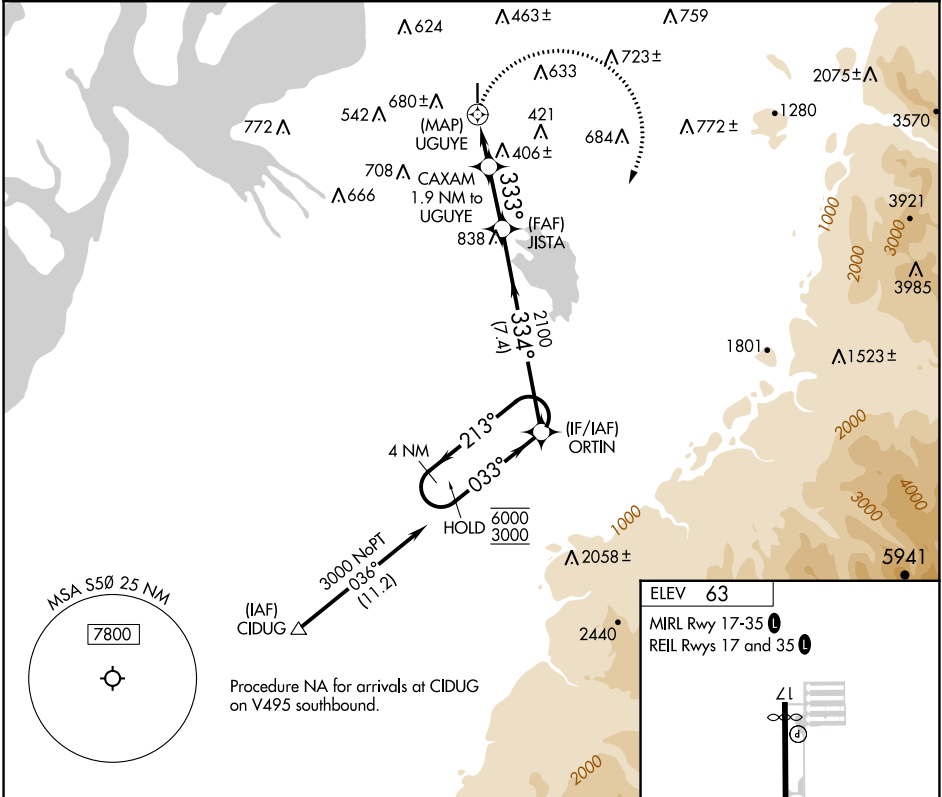
AUBURN MUNI (S50)

RNP APCH - GPS.

**NA** Circling NA west of Rwy 17-35. Rwy 17 and 35 helicopter visibility reduction below 1 SM NA. When Circling to Rwy 17, 35 at night, operational VGSI required, remain on or above VGSI glidepath until threshold. Use Seattle-Tacoma Intl altimeter setting. Procedure NA at night when VGSI inoperative.

MISSED APPROACH: Climbing right turn to 3000 direct ORTIN and hold.

SEA ASOS <b>118.0</b>	SEATTLE APP CON <b>123.85</b>	CLNC DEL <b>123.85</b>	UNICOM <b>122.975</b> (CTAF) <b>1</b>
--------------------------	----------------------------------	---------------------------	--



NW-1, 28 NOV 2024 to 26 DEC 2024

NW-1, 28 NOV 2024 to 26 DEC 2024

