

APP CRS 070°	Rwy Idg TDZE Apt Elev	N/A N/A 1564
------------------------	-----------------------------	---

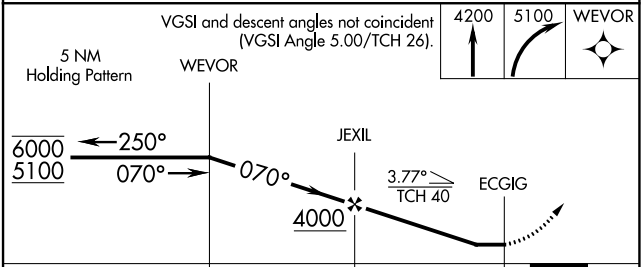
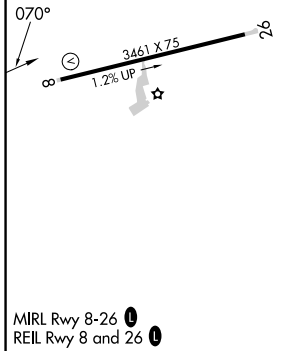
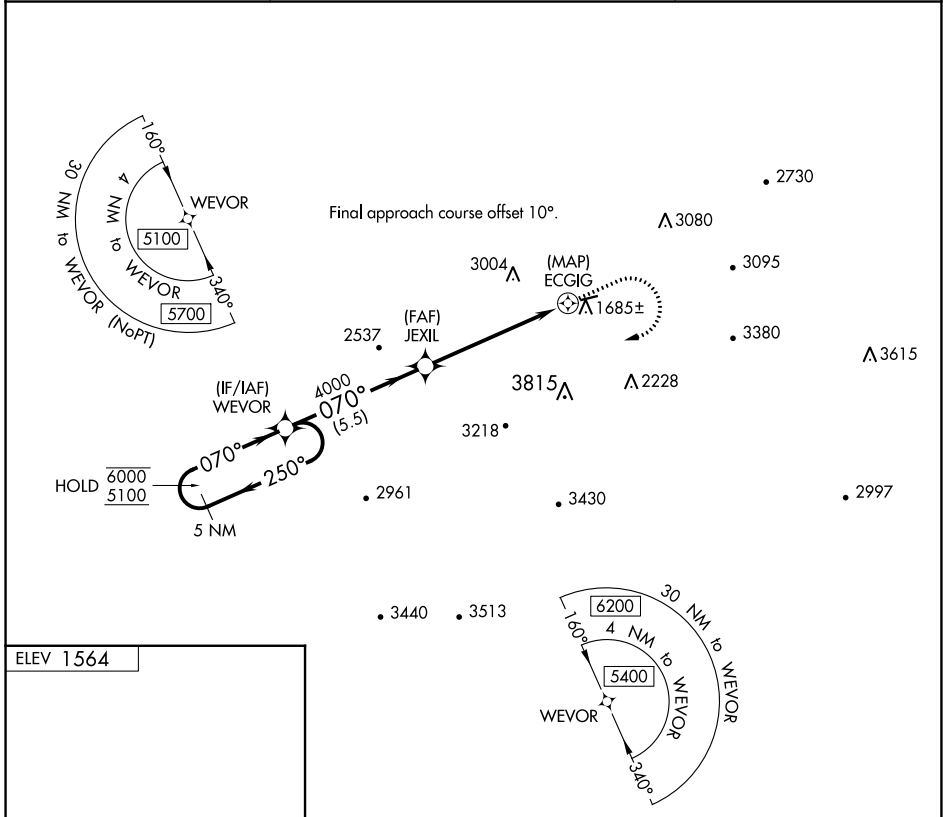
RNAV (GPS)-A

TUCKER-GUTHRIE MEML (I35)

RNP APCH. MISSED APPROACH: Climb to 4200 then climbing right turn to 5100 direct WEVOR and hold.

▼ Circling NA north of Rwy 8-26. Procedure NA at night.
▲ Rwy 8 helicopter visibility reduction below 1 SM NA.

AWOS-3 118.35	INDIANAPOLIS CENTER 124.625 371.925	UNICOM 122.8 (CTAF) 0
-------------------------	---	---------------------------------



CATEGORY	A	B	C	D
C CIRCLING	2920-1¼ 1356 (1400-1¼)	2920-1½ 1356 (1400-1½)	3360-3 1796 (1800-3)	NA

SE-1, 28 NOV 2024 to 26 DEC 2024

SE-1, 28 NOV 2024 to 26 DEC 2024