

WAAS CH 72643 W34A	APP CRS 345°	Rwy ldg TDZE 79 Apt Elev 79	3400
--	------------------------	---	-------------

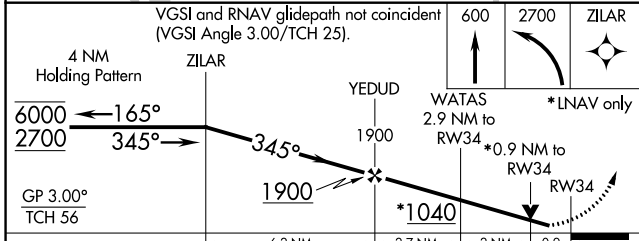
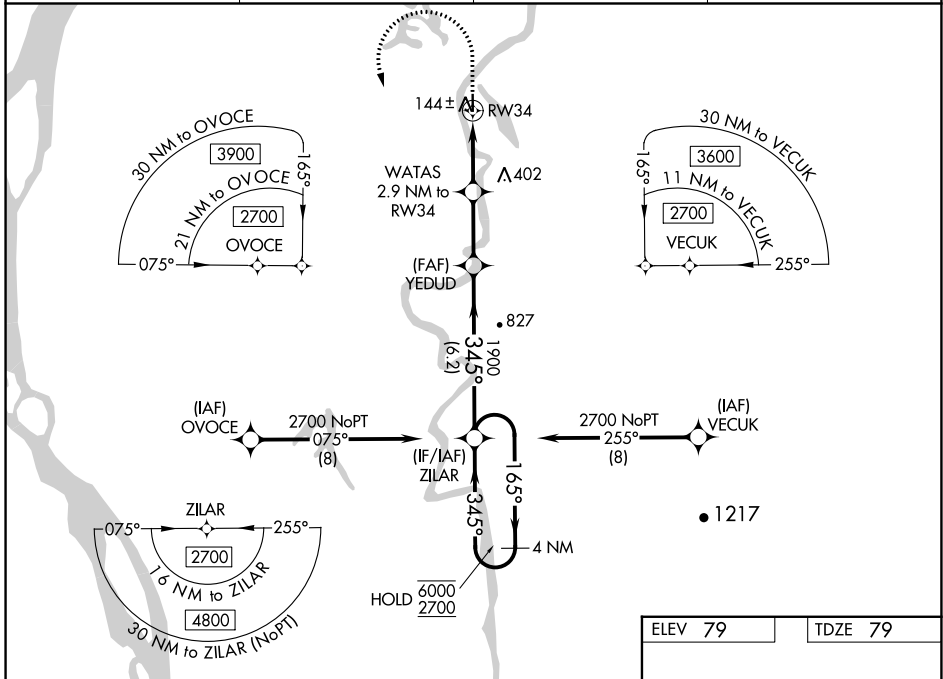
RNAV (GPS) RWY 34

SHAGELUK (SHX) (PAHX)

RNP APCH.
 ▼ Rwy 34 helicopter visibility reduction below 3/4 SM NA. For uncompensated Baro-VNAV systems, LNAV/VNAV NA below -18°C or above 54°C. Circling NA for Cats C and D east of Rwy 16-34.
 ▲

MISSED APPROACH: Climb to 600 then climbing left turn to 2700 direct ZILAR and hold.

AWOS-3P 121.575	ANCHORAGE CENTER 135.7 335.5	KENAI RADIO 122.4	UNICOM 122.8 (CTAF)
---------------------------	--	-----------------------------	-------------------------------



ELEV 79	TDZE 79
---------	---------

Water Rwy: 18W-36W 5000 X 1000

3400 X 75
 3400 X 75

MIRL Rwy 16-34
 REIL Rwy 34

345° to RW34

CATEGORY	A	B	C	D
LPV DA		329-1	250 (300-1)	
LNAV/VNAV DA		329-1	250 (300-1)	
LNAV MDA		400-1	321 (400-1)	
CIRCLING	460-1 381 (400-1)	540-1 461 (500-1)	540-1½ 461 (500-1½)	800-2¼ 721 (800-2¼)

AK, 31 OCT 2024 to 26 DEC 2024

AK, 31 OCT 2024 to 26 DEC 2024