

APP CRS <b>038°</b>	Rwy Idg <b>4000</b>
	TDZE <b>1034</b>
	Apt Elev <b>1036</b>

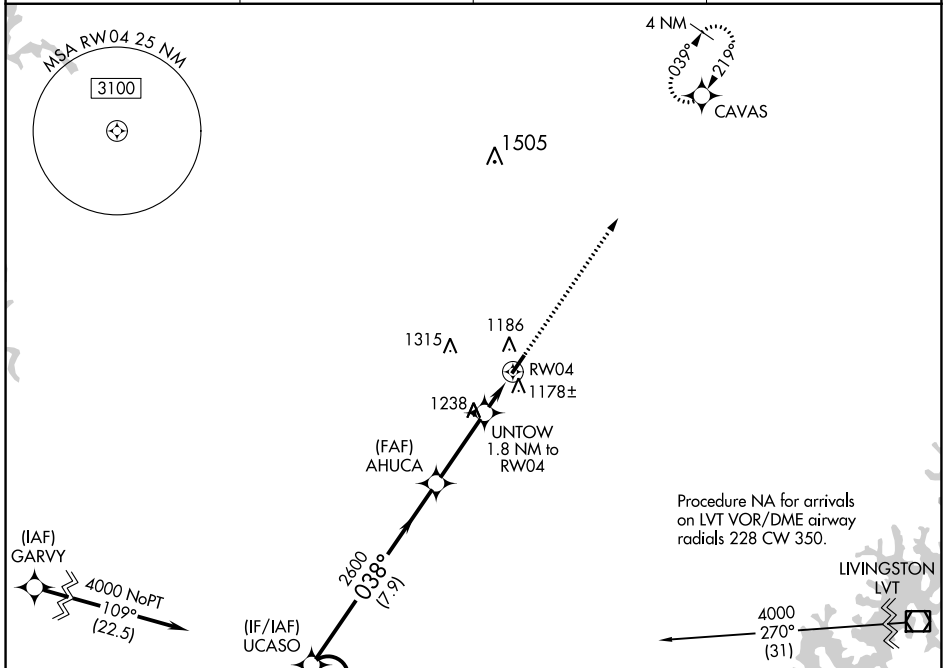
# RNAV (GPS) RWY 4

TOMPKINSVILLE/MONROE COUNTY (T'ZV)

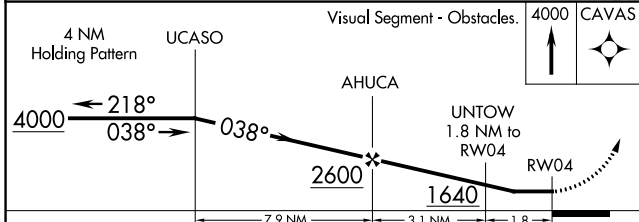
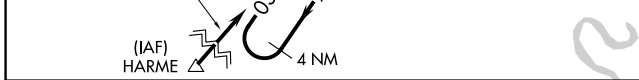
**▽** DME/DME RNP-0.3 NA.  
**△** NA Helicopter visibility reduction below 1 SM NA.  
 Night landing: Rwy 4 NA.  
 Use Glasgow altimeter setting.

MISSED APPROACH: Climb to 4000 direct CAVAS and hold.

AWOS-AV <b>124.175</b>	GLW AWOS-3 <b>118.525</b>	MEMPHIS CENTER <b>132.9 290.3</b>	UNICOM <b>123.05 (CTAF) 0</b>
---------------------------	------------------------------	--------------------------------------	----------------------------------



ELEV 1036	TDZE 1034
-----------	-----------



CATEGORY	A	B	C	D
LNNAV MDA	1540-1	506 (600-1)	1540-1 3/8 506 (600-1 3/8)	NA
<b>C</b> CIRCLING	1640-1 604 (700-1)	1800-1 764 (800-1)	1840-2 1/4 804 (900-2 1/4)	NA

SE-1, 28 NOV 2024 to 26 DEC 2024

SE-1, 28 NOV 2024 to 26 DEC 2024