

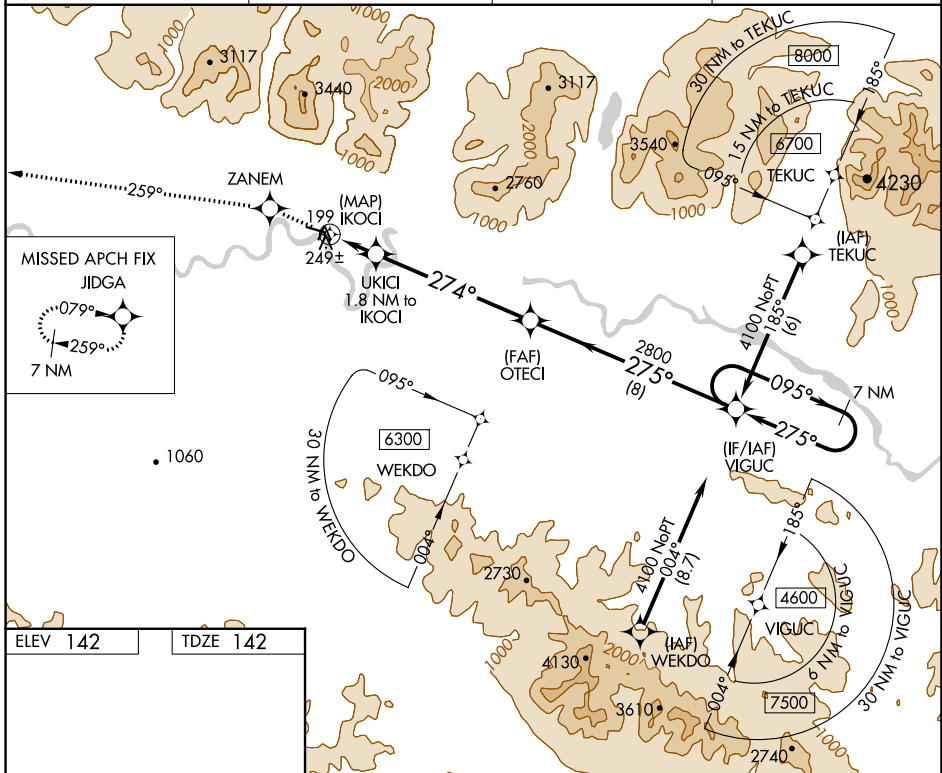
APP CRS	Rwy Idg	<b>4020</b>
<b>274°</b>	TDZE	<b>142</b>
	Apt Elev	<b>142</b>

# RNAV (GPS) RWY 27

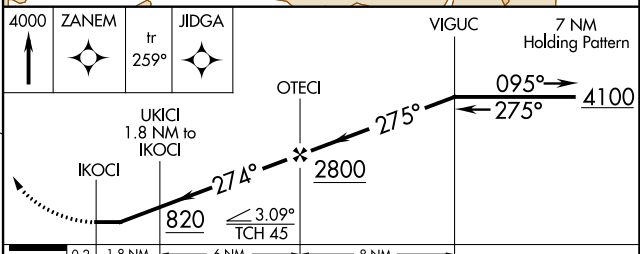
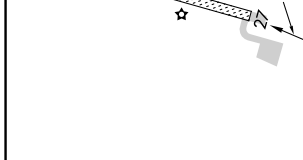
KOBUK (OBU) (PAOB)

RNP APCH - GPS.		MISSED APPROACH: Climb to 4000 direct ZANEM and on track 259° to JIDGA and hold.
▼	Use Amblor altimeter setting. Circling NA north of Rwy 9-27.	
▲ NA	Rwy 27 helicopter visibility reduction below ¾ SM NA.	
☁ -37°C	Straight-in Rwy 27 NA at night, Circling Rwy 27 NA at night.	

AFM/PAFM AWOS-3P <b>132.1</b>	ANCHORAGE CENTER <b>119.2 263.0</b>	KOTZEBUE RADIO <b>122.0</b>	CTAF <b>122.7</b>
----------------------------------	--	--------------------------------	----------------------



ELEV 142	TDZE 142
----------	----------



CATEGORY	A	B	C	D
LNAV MDA	640-1	498 (500-1)	640-1⅓	498 (500-1⅓)
CIRCLING	700-1	558 (600-1)	700-1½ 558 (600-1½)	840-2¼ 698 (700-2¼)

AK, 31 OCT 2024 to 26 DEC 2024

AK, 31 OCT 2024 to 26 DEC 2024