

APP CRS	Rwy Idg	<b>4020</b>
<b>080°</b>	TDZE	<b>142</b>
	Apt Elev	<b>142</b>

# RNAV (GPS) RWY 9

KOBUK (OBU) (PAOB)

RNP APCH - GPS.

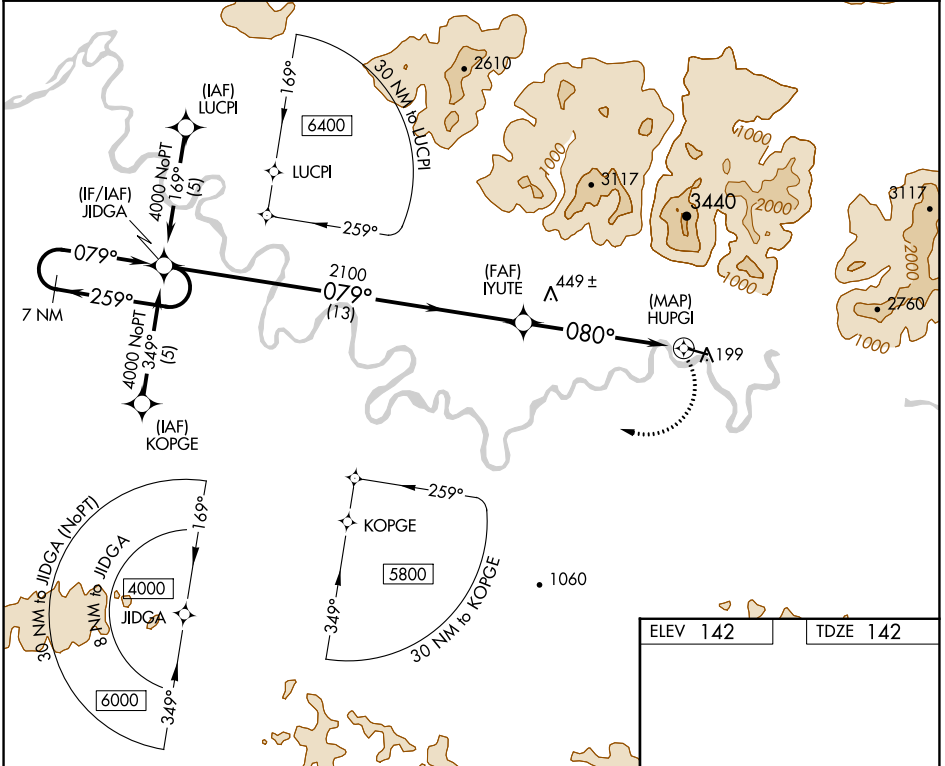
**▼** Use Amber altimeter setting. Circling NA north of Rwy 9-27.

**▲** NA Rwy 9 helicopter visibility reduction below 3/4 SM NA.

**☄** -37°C Circling Rwy 27 NA at night.

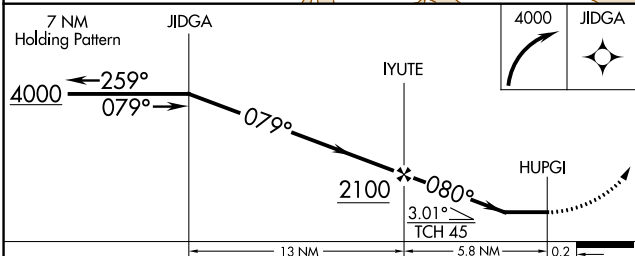
MISSED APPROACH: Climbing right turn to 4000 direct JIDGA and hold.

AFM/PAFM AWOS-3P <b>132.1</b>	ANCHORAGE CENTER <b>119.2 263.0</b>	KOTZEBUE RADIO <b>122.0</b>	CTAF <b>122.7</b>
----------------------------------	--	--------------------------------	----------------------

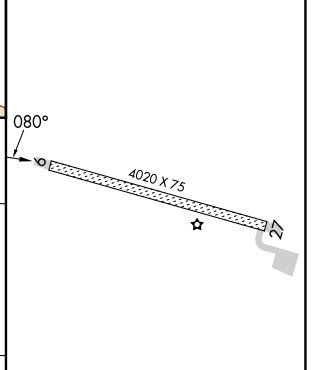


AK, 31 OCT 2024 to 26 DEC 2024

AK, 31 OCT 2024 to 26 DEC 2024



ELEV 142	TDZE 142
----------	----------



CATEGORY	A	B	C	D
LNVA MDA	780-1	638 (700-1)	780-1 3/4 638 (700-1 3/4)	780-2 638 (700-2)
CIRCLING	780-1	638 (700-1)	780-1 3/4 638 (700-1 3/4)	840-2 1/4 698 (700-2 1/4)

MIRL Rwy 9-27