

LOC/DME I-PUJ 109.15	APP CRS 311°	Rwy Idg TDZE Apt Elev	5505 1283 1289
Chan 28 (Y)			

ILS or LOC RWY 31

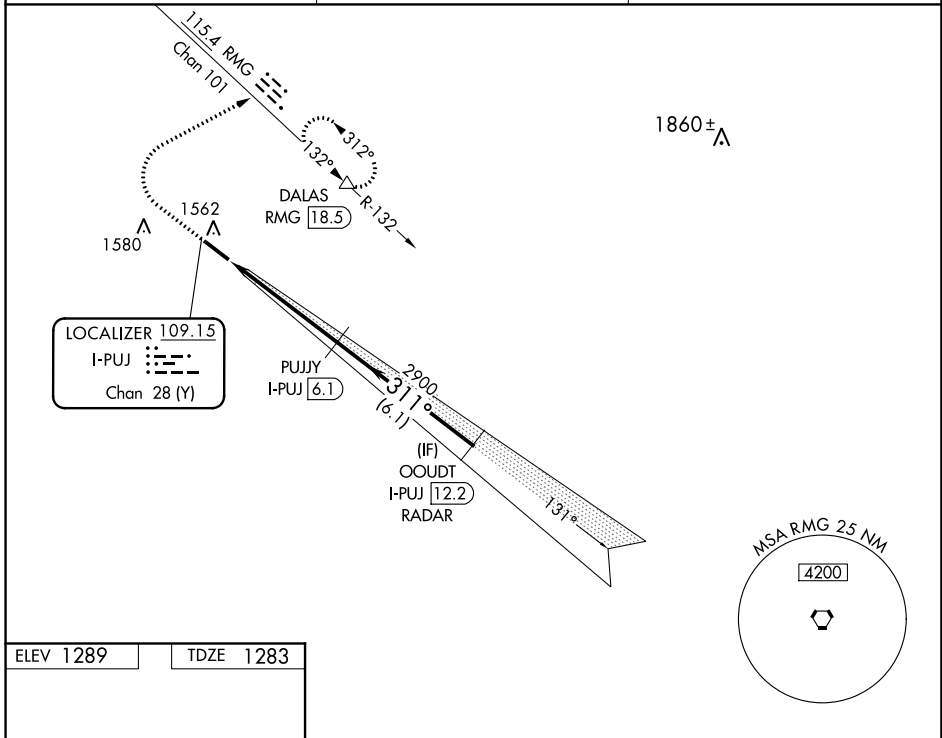
PAULDING NORTHWEST ATLANTA (PUJ)

DME required. RADAR required for procedure entry.

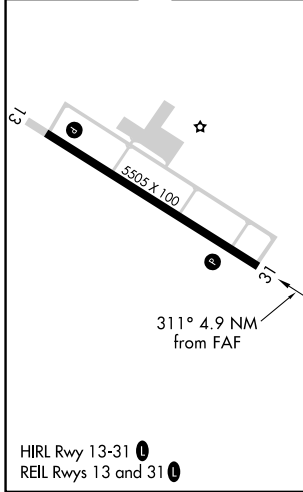
⚠ Autopilot coupled approach NA below 1680.

MISSED APPROACH: Climb to 3000 then climbing right turn to 3600 on heading 066° and RMG VORTAC R-132 to DALAS INT/RMG 18.5 DME and hold.

AWOS-3 126.225	ATLANTA APP CON 121.0 268.7	UNICOM 123.075 (CTAF) 0
--------------------------	---------------------------------------	--



ELEV 1289	TDZE 1283
-----------	-----------



3000	3600	RMG R-132	DALAS	PUJYY I-PUJ 6.1	OODT I-PUJ 12.2 RADAR
↑	hdg 066°		△		
*LOC only.					
I-PUJ 1.2	*I-PUJ 2.3	2900	311°	3000	GS 3.00° TCH 48
-1.1 NM		-3.8 NM		-6.1 NM	
CATEGORY	A	B	C	D	
S-ILS 31	1483- ³ / ₄ 200 (200- ³ / ₄)				
S-LOC 31	1680-1	397 (400-1)	1680-1 ¹ / ₈	397 (400-1 ¹ / ₈)	
C CIRCLING	1880-1	591 (600-1)	1940-1 ³ / ₄ 651 (700-1 ³ / ₄)	1940-2 651 (700-2)	

SE-4, 28 NOV 2024 to 26 DEC 2024

SE-4, 28 NOV 2024 to 26 DEC 2024