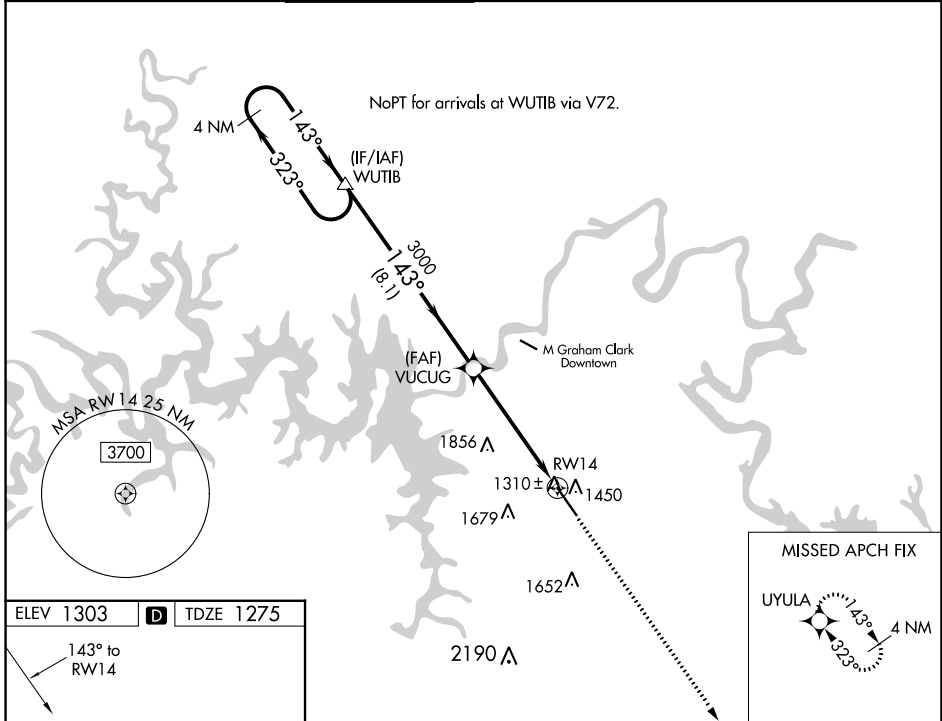


WAAS CH 49111 W14A	APP CRS 143°	Rwy Idg TDZE Apt Elev	7140 1275 1303
--	------------------------	-----------------------------	---

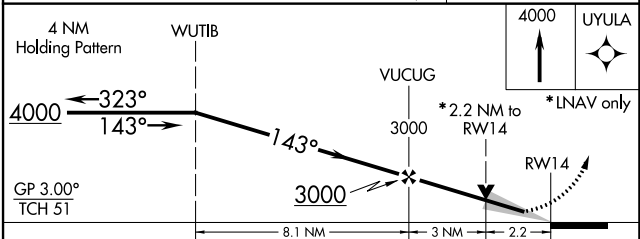
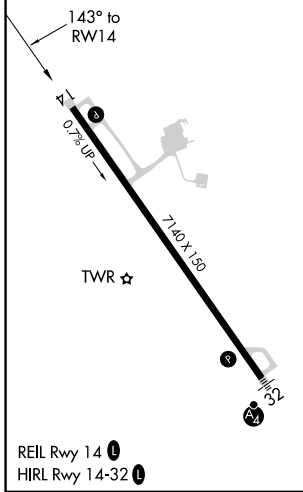
RNAV (GPS) RWY 14

BRANSON (BBG)

RNP APCH.		MISSED APPROACH: Climb to 4000 direct UYULA and hold.				
<p>▼ For uncompensated Baro-VNAV systems, LNAV/VNAV NA below -17°C or above 46°C. When local altimeter setting not received, use Harrison altimeter setting and increase all DA 47 feet and all MDA 60 feet. VDP and Baro-VNAV NA when using Harrison altimeter setting.</p>						
ATIS 124.625	SPRINGFIELD APP CON 126.35	BRANSON TOWER* 128.15 (CTAF) 0	GND CON 118.4	CLNC DEL 118.4	SPRINGFIELD CLNC DEL 126.35 (When tower closed)	UNICOM 122.95



ELEV 1303	D	TDZE 1275
-----------	----------	-----------



CATEGORY	A	B	C	D
LPV DA	1525-1 250 (300-1)			
LNAV/VNAV DA	1798-2 523 (500-2)			
LNAV MDA	2020-1 745 (800-1)	2020-1¼ 745 (800-1¼)	2020-2¼ 745 (800-2¼)	2020-2½ 745 (800-2½)

NC-3, 28 NOV 2024 to 26 DEC 2024

NC-3, 28 NOV 2024 to 26 DEC 2024