

APP CRS	Rwy Idg	4800
344°	TDZE	2724
	Apt Elev	2724

RNAV (GPS) RWY 34

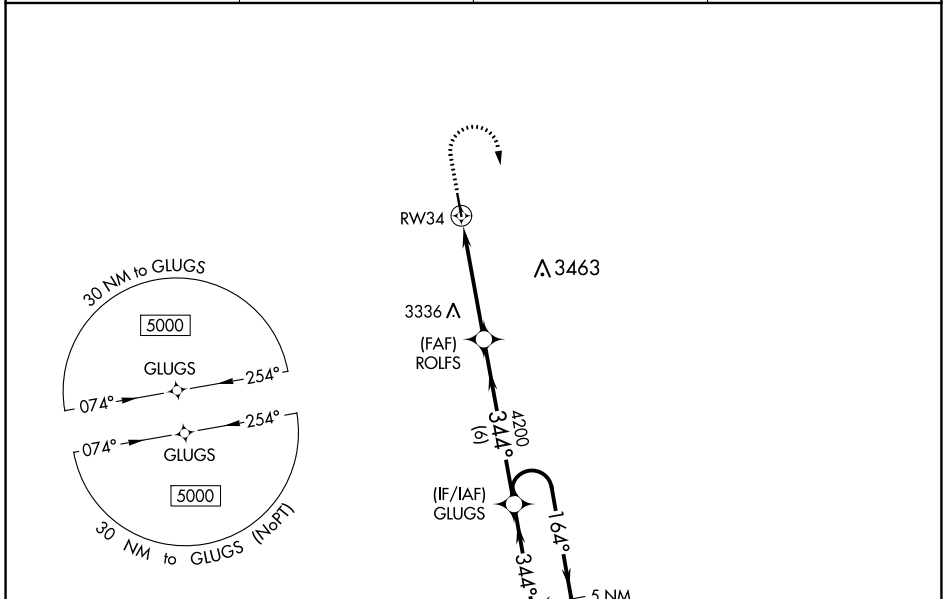
ROSEBUD SIOUX TRIBAL (STUO)

RNP APCH - GPS.

⚠ Rwy 34 helicopter visibility reduction below 1 SM NA. Use Valentine altimeter setting, when not received, use Martin altimeter setting and increase all MDAs 100 feet and LNAV visibility Cat B ¼ SM, Cat C ½ SM, and Circling visibility Cat B ¼ SM, Cat C ½ SM. Procedure NA at night.

⚠ NA MISSED APPROACH: Climb to 3400 then climbing right turn to 5000 direct GLUGS and hold.

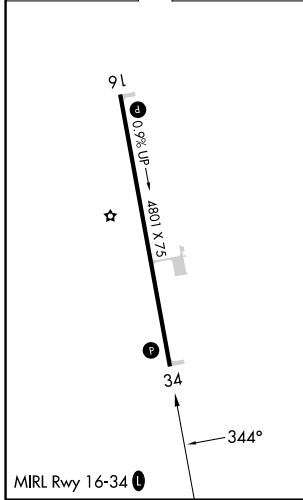
AWOS-3P 119,075	VTN ASOS 118,075	DENVER CENTER 127.95 338.2	CTAF 122.9
---------------------------	----------------------------	--------------------------------------	----------------------



NC-1, 28 NOV 2024 to 26 DEC 2024

NC-1, 28 NOV 2024 to 26 DEC 2024

ELEV 2724	D	TDZE 2724
-----------	----------	-----------



3400	5000	GLUGS	VGSI and descent angles not coincident (VGSI Angle 3.00/TCH 30).	
↑	↷	✧		
ROLFS		GLUGS	5 NM Holding Pattern	
RW34				
4.5 NM		6 NM		
CATEGORY	A	B	C	D
LNAV MDA	3380-1	656 (700-1)	3380-1 7/8 656 (700-1 7/8)	NA
C CIRCLING	3380-1	656 (700-1)	3440-2 716 (800-2)	NA