

WAAS CH 72914 W01A	APP CRS 008°	Rwy ldg 3700 TDZE 1774 Apt Elev 1774
--	------------------------	---

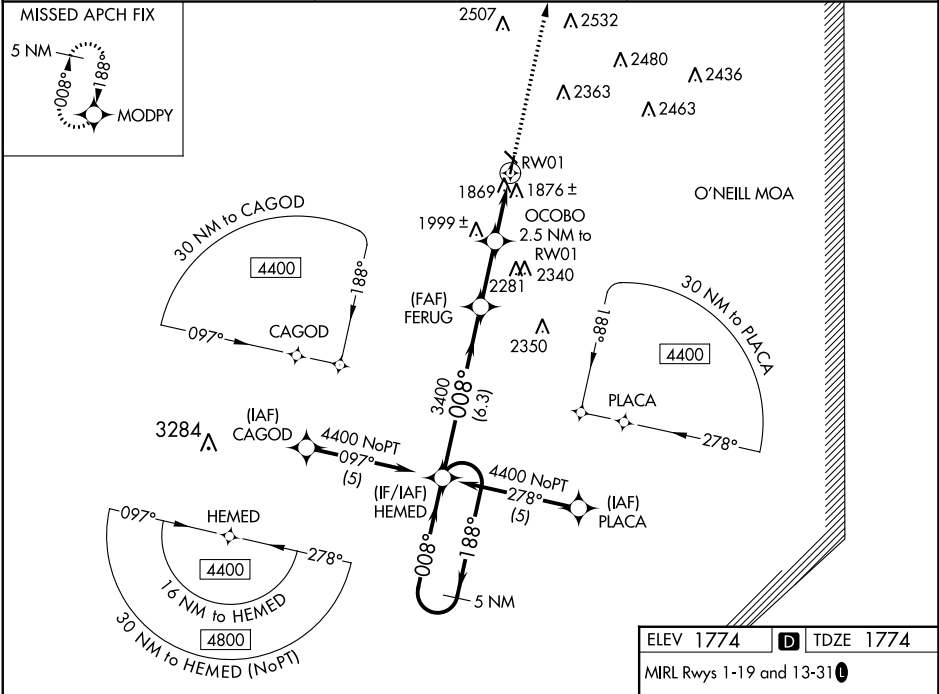
RNAV (GPS) RWY 1

ANTELOPE COUNTY (4V9)

Baro-VNAV NA. DME/DME RNP-0.3 NA. Use Albion altimeter setting; when not received, use Norfolk altimeter setting and increase all DA/MDA 40 feet and LNAV/VNAV all Cats visibility ¼ mile.

MISSED APPROACH: Climb to 4400 direct MODPY and hold.

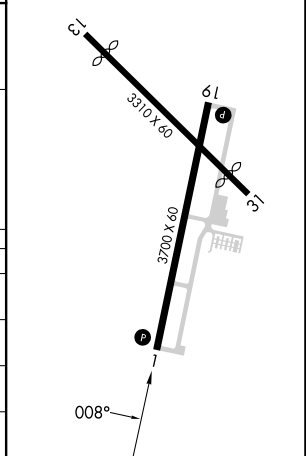
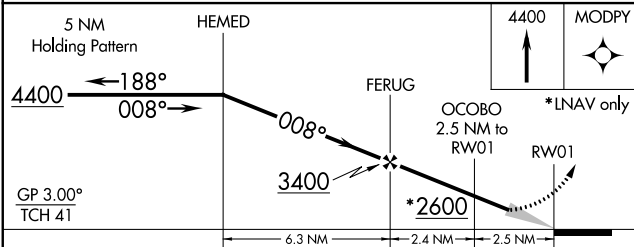
AWOS-3PT 119.275	MINNEAPOLIS CENTER 128.0 257.95	UNICOM 122.8 (CTAF)
----------------------------	---	-------------------------------



NC-2, 28 NOV 2024 to 26 DEC 2024

NC-2, 28 NOV 2024 to 26 DEC 2024

ELEV 1774	TDZE 1774
MIRL Rwy 1-19 and 13-31	



CATEGORY	A	B	C	D
LPV DA	2181-1½	407 (500-1½)		NA
LNAV/VNAV DA	2197-1½	423 (500-1½)		NA
LNAV MDA	2320-1	546 (600-1)		NA
CIRCLING	2360-1 586 (600-1)	2440-1 666 (700-1)		NA