

WAAS CH <b>99538</b> <b>W34A</b>	APP CRS <b>327°</b>	Rwy Idg TDZE Apt Elev	<b>2901</b> <b>35</b> <b>35</b>
--	------------------------	-----------------------------	---------------------------------------

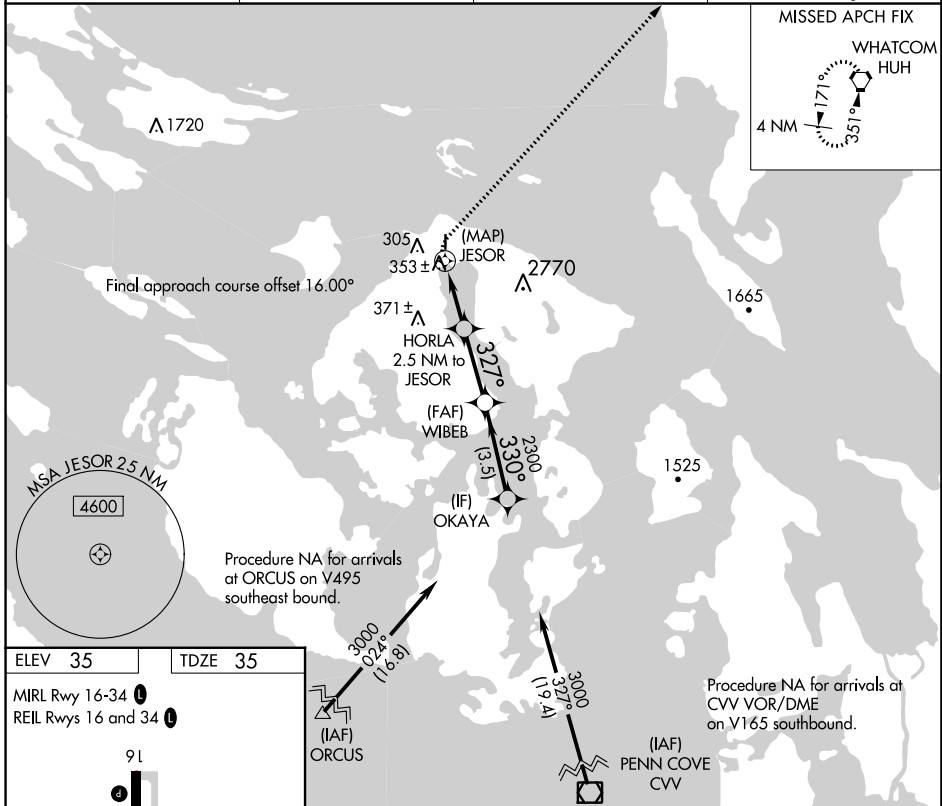
# RNAV (GPS) RWY 34

ORCAS ISLAND (ORS)

**⚠** DME/DME RNP-0.3 NA. Helicopter visibility reduction below 1 SM NA.  
**⚠** WAAS required, if unable see RNAV GPS-A. When local altimeter setting not received, use Friday Harbor altimeter setting and increase all MDA 40 feet and LP Cat B visibility ¼ mile. Night landing: Rwy 34 NA.

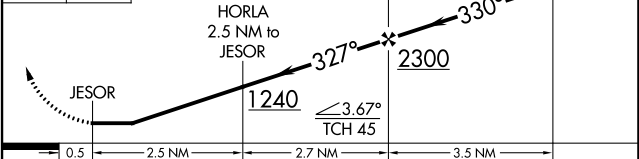
**MISSED APPROACH:** Climbing right turn to 2000 direct HUH VORTAC and hold.

AWOS-3P <b>135.425</b>	WHIDBEY APP CON <b>118.2 285.65</b> (SOUTH)	VICTORIA APP CON <b>132.7 290.8</b> (NORTH)	CTAF <b>128.250</b>
---------------------------	--	--	------------------------



ELEV 35	TDZE 35
MIRL Rwy 16-34 <b>Ⓛ</b>	REIL Rwys 16 and 34 <b>Ⓛ</b>

2000 HUH VGSi and descent angles not coincident (VGSi Angle 4.00/TCH 42).



CATEGORY	A	B	C	D
LP MDA	760-1	725 (800-1)	NA	
<b>C</b> CIRCLING	1120-1¼ 1085 (1100-1¼)	1820-1½ 1785 (1800-1½)	NA	

NW-1, 28 NOV 2024 to 26 DEC 2024

NW-1, 28 NOV 2024 to 26 DEC 2024