

APP CRS 312°	Rwy Idg 4007
	TDZE 510
	Apt Elev 514

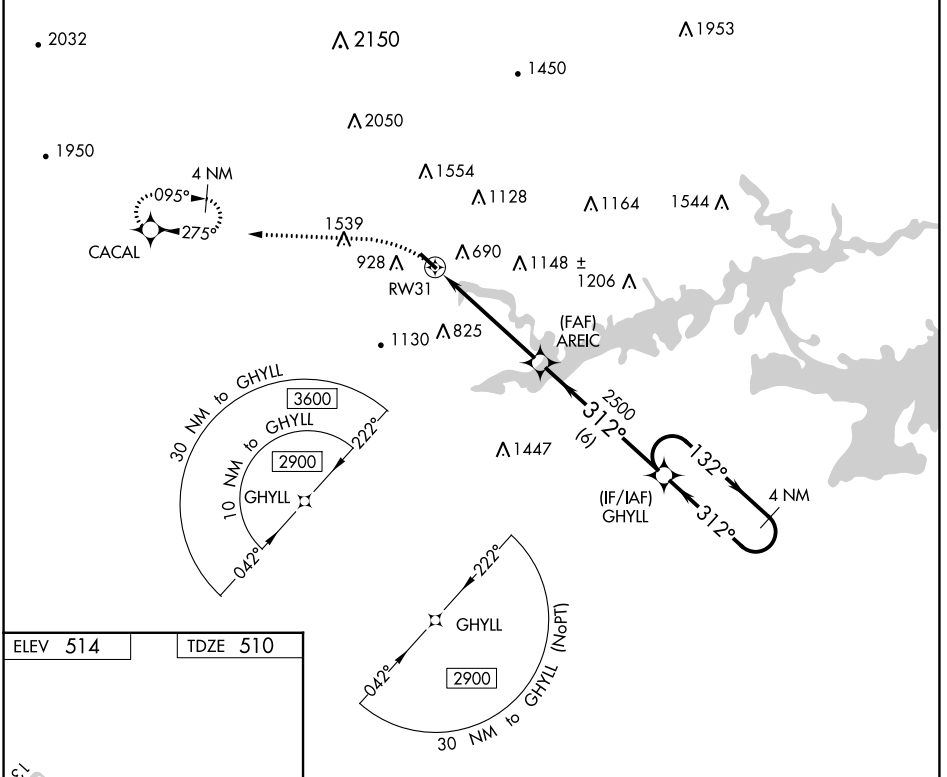
RNAV (GPS) RWY 31

CLINTON MUNI (CCA)

▽ When local altimeter setting not received, procedure NA.
△ NA DME/DME RNP-0.3 NA. Helicopter visibility reduction below 1 SM NA. Procedure NA at night.

MISSED APPROACH: Climbing left turn to 3700 direct CACAL and hold.

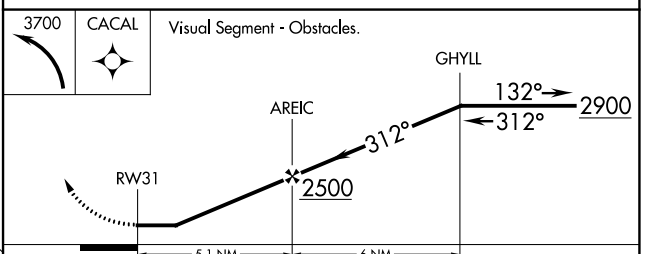
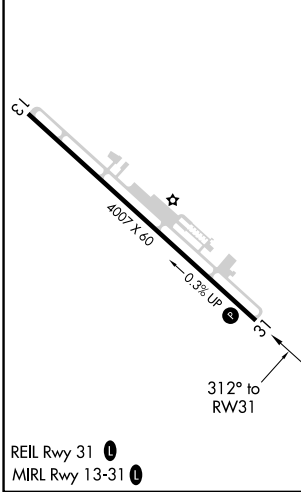
AWOS-3 118.725	MEMPHIS CENTER 126.85 281.55	UNICOM 122.7 (CTAF) 1
--------------------------	--	---------------------------------



SC-1, 28 NOV 2024 to 26 DEC 2024

SC-1, 28 NOV 2024 to 26 DEC 2024

ELEV 514	TDZE 510
----------	----------



REIL Rwy 31 1
 MIRL Rwy 13-31 1

CATEGORY	A	B	C	D
LNAV MDA	1460-1¼	950 (1000-1¼)	1460-2½ 950 (1000-2½)	NA
C CIRCLING	1460-1¼ 946 (1000-1¼)	1620-1½ 1106 (1200-1½)	1880-3 1366 (1400-3)	NA