

WAAS CH 93637 W12A	APP CRS 119°	Rwy Idg 3300 TDZE 813 Apt Elev 813
--	------------------------	---

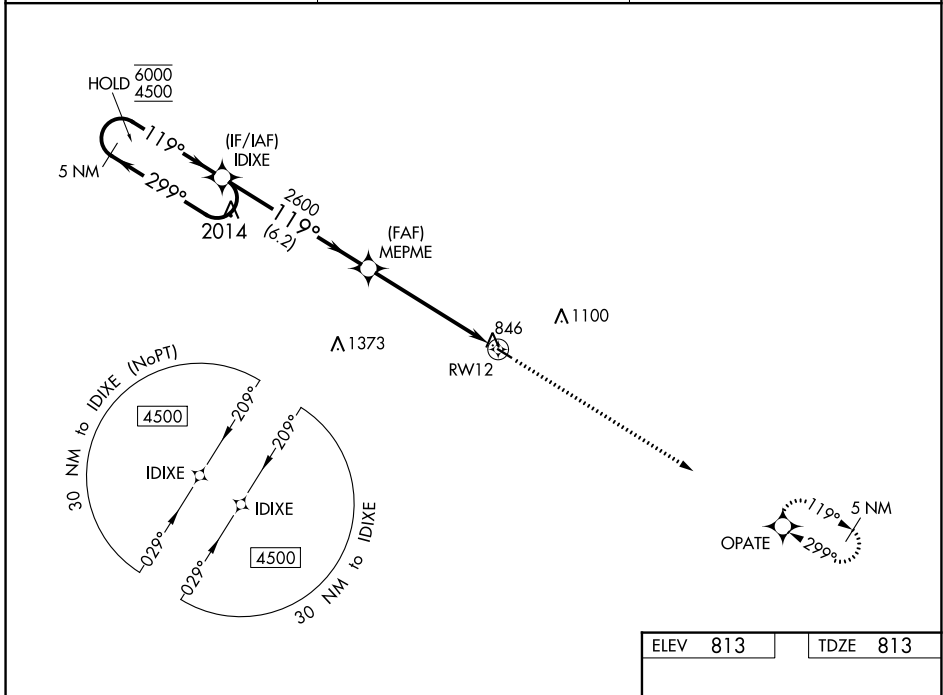
RNAV (GPS) RWY 12

MEMPHIS MEML (Ø3D)

RNP APCH.
 ▼ Rwy 12 helicopter visibility reduction below ¾ SM NA.
 ▲ NA Baro-VNAV NA. Use Kirksville altimeter setting.

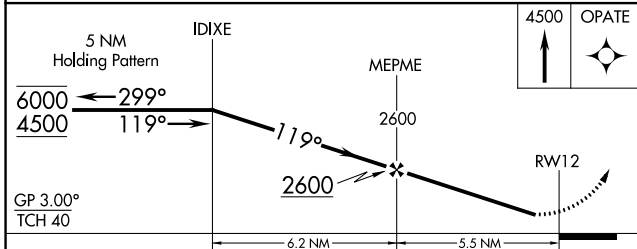
MISSED APPROACH: Climb to 4500 direct OPATE and hold, continue climb-in-hold to 4500.

IRK ASOS 121.125	KANSAS CITY CENTER 126.225 317.775	CTAF 122.90
----------------------------	--	-----------------------



NC-3, 28 NOV 2024 to 26 DEC 2024

NC-3, 28 NOV 2024 to 26 DEC 2024



ELEV 813	TDZE 813
4500	OPATE
119° to RWY 12	3300 X 60

CATEGORY	A	B	C	D
LPV DA	1144-1 331 (400-1)			NA
LNAV/VNAV DA	1144-1 331 (400-1)			NA
LNAV MDA	1360-1	547 (600-1)	1360-1½ 547 (600-1½)	NA
CIRCLING	1360-1	547 (600-1)	1500-2 687 (700-2)	NA