

LOC/DME I-PUK <b>111.15</b> Chan <b>48 (Y)</b>	APP CRS <b>162°</b>	Rwy ldg TDZE Apt Elev	<b>10000</b> <b>69</b> <b>69</b>
--	------------------------	-----------------------------	--

# ILS or LOC RWY 16

## NORTHWEST FLORIDA BEACHES INTL (ECP)

DME required for procedure entry. DME required.

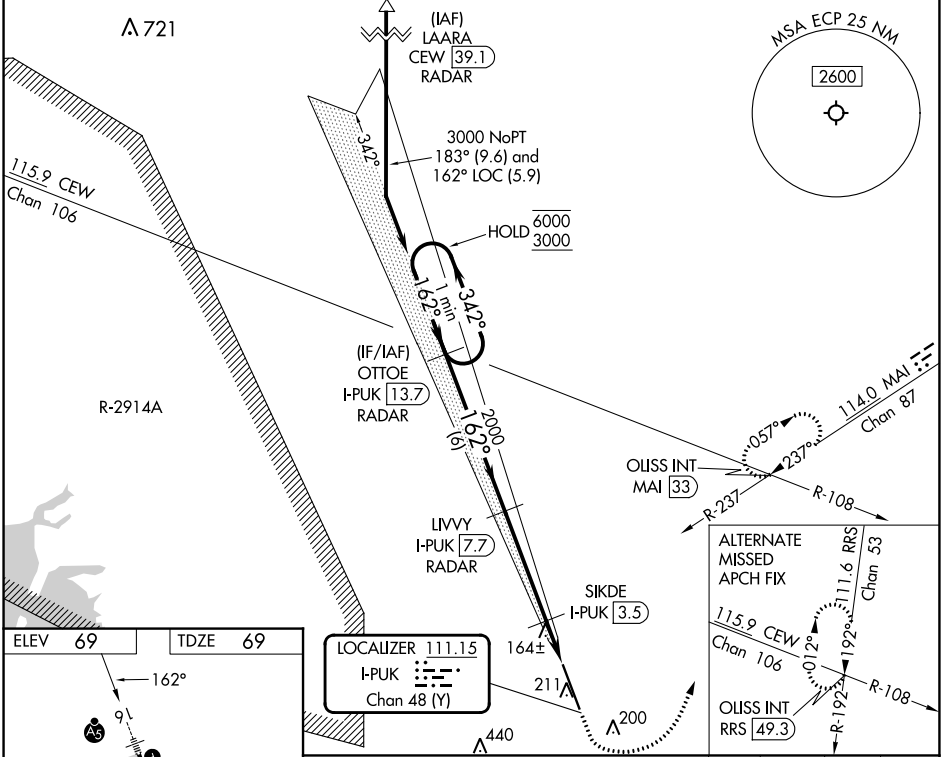
**⚠** For inop ALS, increase S-LOC 16 Cat C/D visibility to RVR 5500.  
**⚠** #RVR 1800 authorized with use of FD or AP or HUD to DA.

MALSR



MISSED APPROACH: Climb to 600 then climbing left turn to 4000 on heading 025° and on MAI VORTAC R-237 to OLISS INT/MAI 33 DME and hold, continue climb-in-hold to 4000.

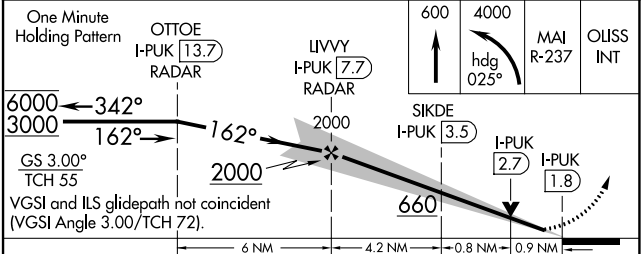
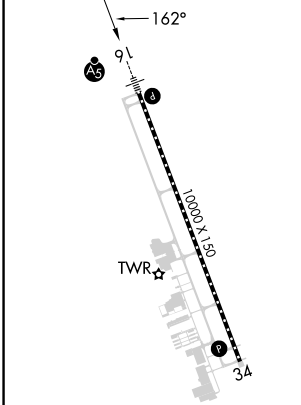
ATIS <b>119.975</b>	TYNDALL APP CON ★ <b>125.2</b> (N above 5000')	PANAMA CITY TOWER★ <b>118.95</b> (CTAF) <b>0</b>	GND CON <b>121.65</b>	CLNC DEL <b>123.75</b>
------------------------	---	---	--------------------------	---------------------------



SE-3, 28 NOV 2024 to 26 DEC 2024

SE-3, 28 NOV 2024 to 26 DEC 2024

ELEV 69	TDZE 69
---------	---------



CATEGORY	A	B	C	D
S-ILS 16 #	269/24 200 (200-½)			
S-LOC 16	440/24	371 (400-½)	440/35	371 (400-¾)
<b>C</b> CIRCLING	520-1	451 (500-1)	520-1½	620-2 451 (500-1½) 551 (600-2)

TDZ/CL Rwy 16 **⚠**  
 HIRL Rwy 16-34 **⚠**  
 REIL Rwy 34 **⚠**

# ILS or LOC RWY 16