

| | | |
|--|------------------------|---|
| WAAS CH 69537 W34A | APP CRS 340° | Rwy ldg 3500 TDZE 1482 Apt Elev 1482 |
|--|------------------------|---|

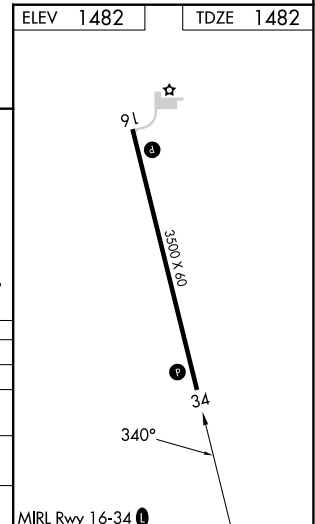
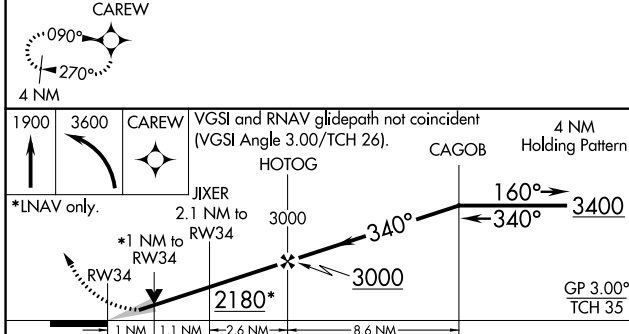
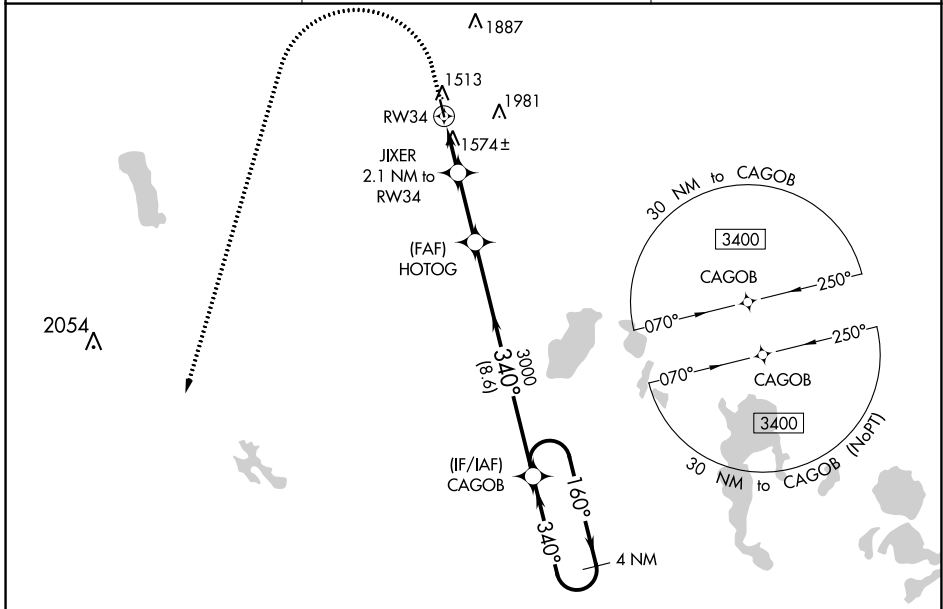
RNAV (GPS) RWY 34

CANDO MUNI (9D7)

▽ DME/DME RNP-0.3 NA. When local altimeter not received, use Devils Lake altimeter setting and increase all DA 63 feet and all MDA 80 feet. Increase LPV visibility $\frac{1}{8}$ mile all Cats and LNAV/VNAV visibility $\frac{1}{4}$ mile all Cats. Baro-VNAV and VDP NA when using Devils Lake altimeter setting. For uncompensated Baro-VNAV systems, LNAV/VNAV NA below -17°C (0°F) or above 54°C (130°F).

MISSED APPROACH:
Climb to 1900 then climbing left turn to 3600 direct CAREW and hold.

| | | |
|--------------------------|--|-------------------------------|
| AWOS-3 118.325 | MINNEAPOLIS CENTER 124.2 270.3 | CTAF 122.9 0 |
|--------------------------|--|-------------------------------|



| | | | | |
|-------------------|-----------------------|----------------------------|--|----------------------|
| 1900 | 3600 | CAREW | VGSI and RNAV glidepath not coincident (VGSI Angle 3.00/TCH 26). | 4 NM Holding Pattern |
| *LNAV only. | | | HOTOG | |
| | | JIXER 2.1 NM to RW34 | 3000 | 160° → 3400 |
| | | *1 NM to RW34 | 2180* | ← 340° |
| | | 1 NM | 1.1 NM | 2.6 NM |
| | | | | 8.6 NM |
| CATEGORY | A | B | C | D |
| LPV DA | 1732-1 | 250 (300-1) | | NA |
| LNAV/VNAV DA | 1871-1 $\frac{3}{8}$ | 389 (400-1 $\frac{3}{8}$) | | NA |
| LNAV MDA | 1840-1 | 358 (400-1) | | NA |
| C CIRCLING | 1900-1 418 (500-1) | 1940-1 458 (500-1) | | NA |

NC-1, 28 NOV 2024 to 26 DEC 2024

NC-1, 28 NOV 2024 to 26 DEC 2024