

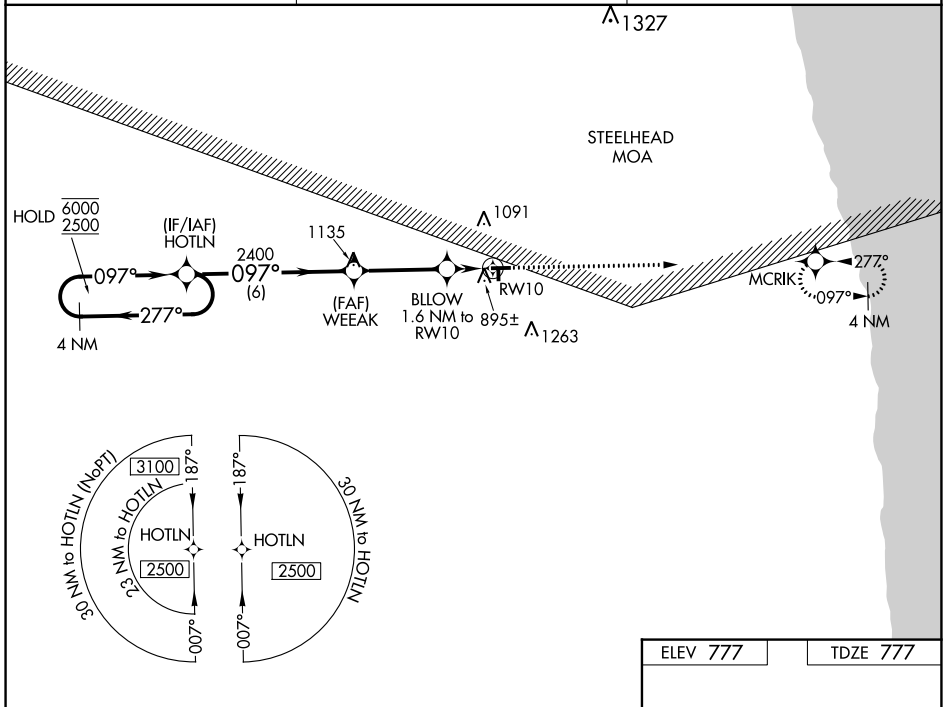
WAAS CH <b>49244</b> <b>W10A</b>	APP CRS <b>097°</b>	Rwy Idg TDZE Apt Elev	<b>3499</b> <b>777</b> <b>777</b>
--	------------------------	-----------------------------	---

# RNAV (GPS) RWY 10

SANDUSKY CITY (Y83)

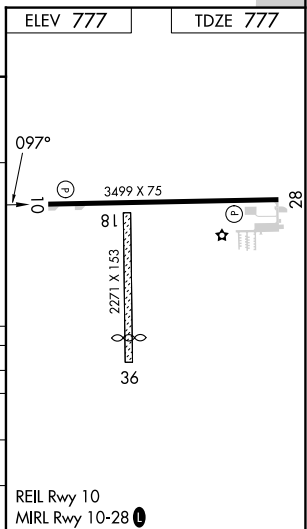
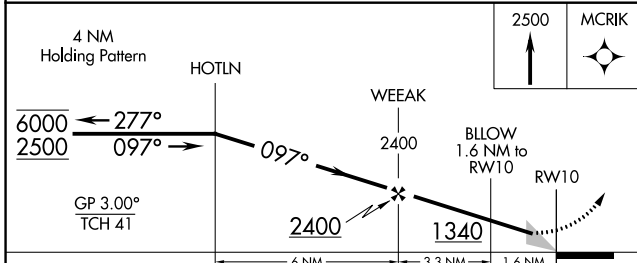
RNP APCH - GPS.	MISSED APPROACH: Climb to 2500 direct MCRIK and hold.
<p>▼ Circling NA to Rwys 18 and 36. Circling NA north of Rwy 10-28.</p> <p>▲ NA Procedure NA at night. Baro-VNAV NA. Use Bad Axe altimeter setting.</p>	

BAX AWOS-3 <b>118.6</b>	CLEVELAND CENTER <b>127.7 290.425</b>	UNICOM <b>122.8 (CTAF) 0</b>
----------------------------	--	---------------------------------



EC-1, 28 NOV 2024 to 26 DEC 2024

EC-1, 28 NOV 2024 to 26 DEC 2024



CATEGORY	A	B	C	D
LPV DA		1077-1	300 (300-1)	NA
LNAV/VNAV DA		1200-1½	423 (500-1½)	NA
LNAV MDA	1200-1	423 (500-1)	1200-1½ 423 (500-1½)	NA
CIRCLING	1260-1 483 (500-1)	1340-1 563 (600-1)	1680-2¾ 903 (1000-2¾)	NA

REIL Rwy 10  
MIRL Rwy 10-28 0