

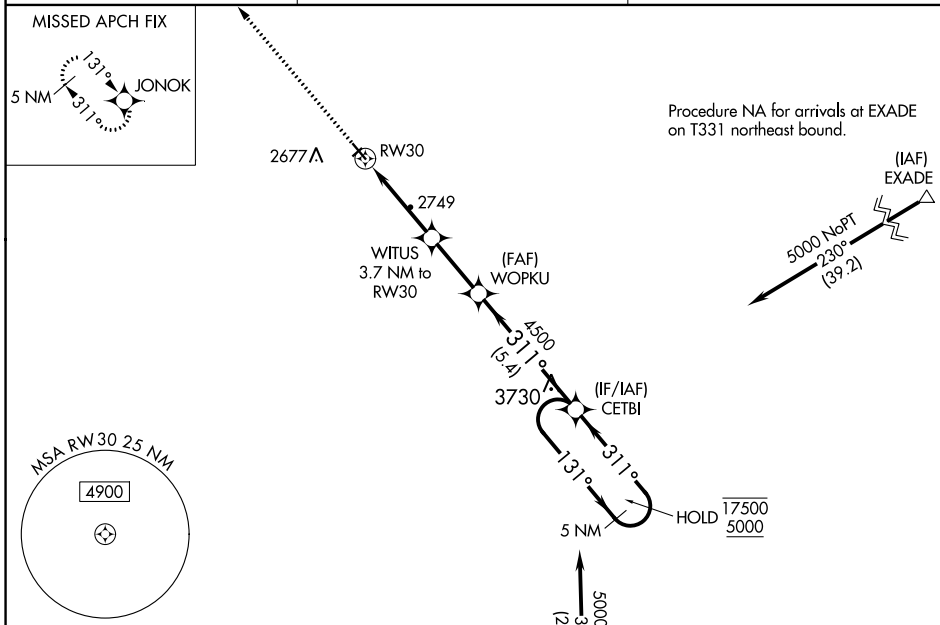
WAAS CH 49030 W30A	APP CRS 311°	Rwy Idg TDZE Apt Elev	4100 2441 2441
---------------------------------	------------------------	-----------------------------	---

RNAV (GPS) RWY 30

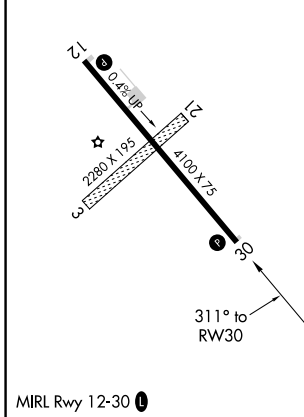
CIRCLE TOWN COUNTY (4U6)

RNP APCH-GPS. ▼ ▲ NA	MISSED APPROACH: Climb to 5000 direct JONOK and hold, continue climb-in-hold to 5000.
----------------------------	---

AWOS-2 119.025	SALT LAKE CENTER 126.85 305.2	UNICOM 122.8 (CTAF) 0
--------------------------	---	--



ELEV 2441	TDZE 2441
-----------	-----------



5000	JONOK	VGSI and RNAV glidepath not coincident (VGSI Angle 3.00/TCH 21).	5 NM Holding Pattern
1.7 NM	2 NM	2.6 NM	5.4 NM

CATEGORY	A	B	C	D
LPV DA	2691-1		250 (300-1)	
LNNAV/VNAV DA	2974-1½		533 (600-1½)	
LNNAV MDA	3000-1	559 (600-1)	3000-1½	559 (600-1½)

NW-1, 28 NOV 2024 to 26 DEC 2024

NW-1, 28 NOV 2024 to 26 DEC 2024