

WAAS CH 69542 W02A	APP CRS 023°	Rwy Idg 3800 TDZE 770 Apt Elev 782
--	------------------------	---

RNAV (GPS) RWY 2

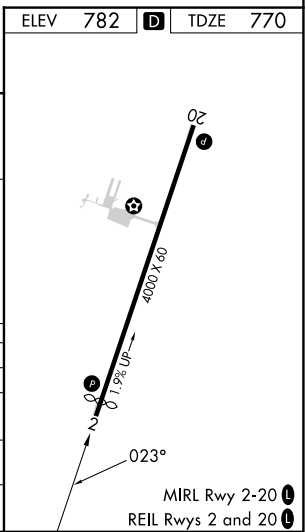
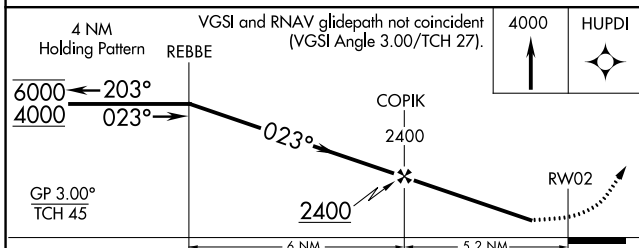
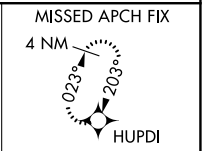
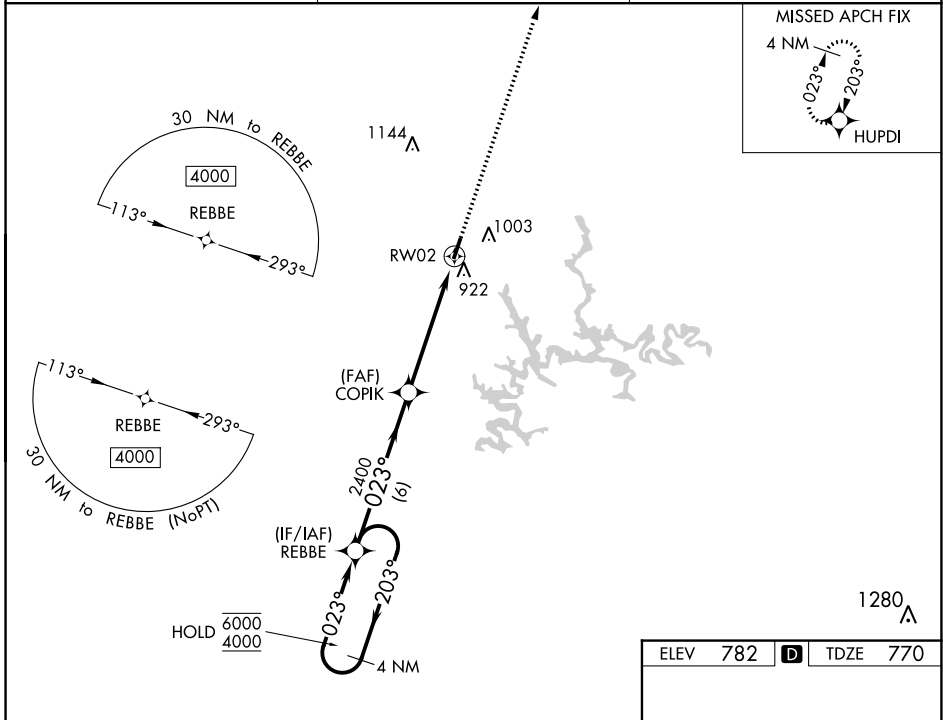
LEITCHFIELD-GRAYSON COUNTY (M20)

RNP APCH.

NA Circling Rwy 20 NA at night. Rwy 2 helicopter visibility reduction below $\frac{3}{4}$ SM NA. Baro-VNAV NA. Use Elizabethtown altimeter setting.

MISSED APPROACH: Climb to 4000 direct HUPDI and hold, continue climb-in-hold to 4000.

EKW AWOS-3 121.025	INDIANAPOLIS CENTER 121.175 353.65	UNICOM 123.0 (CTAF) 0
------------------------------	--	---------------------------------



CATEGORY	A	B	C	D
LPV DA	1140-1	370 (400-1)		NA
LNAV/VNAV DA	1308-1½	538 (600-1½)		NA
LNAV MDA	1240-1	470 (500-1)	1240-1⅜ 470 (500-1⅜)	NA
C CIRCLING	1380-1	598 (600-1)	1380-1½ 598 (600-1½)	NA

SE-1, 28 NOV 2024 to 26 DEC 2024

SE-1, 28 NOV 2024 to 26 DEC 2024