

RNAV GPS RWY 36

APCH CRS	Rwy ldg	3418
010°	TDZE	382
	Arprt Elev	387

[USA] BRYANT AAF (FORT RICHARDSON) (FRN) (PAFR)

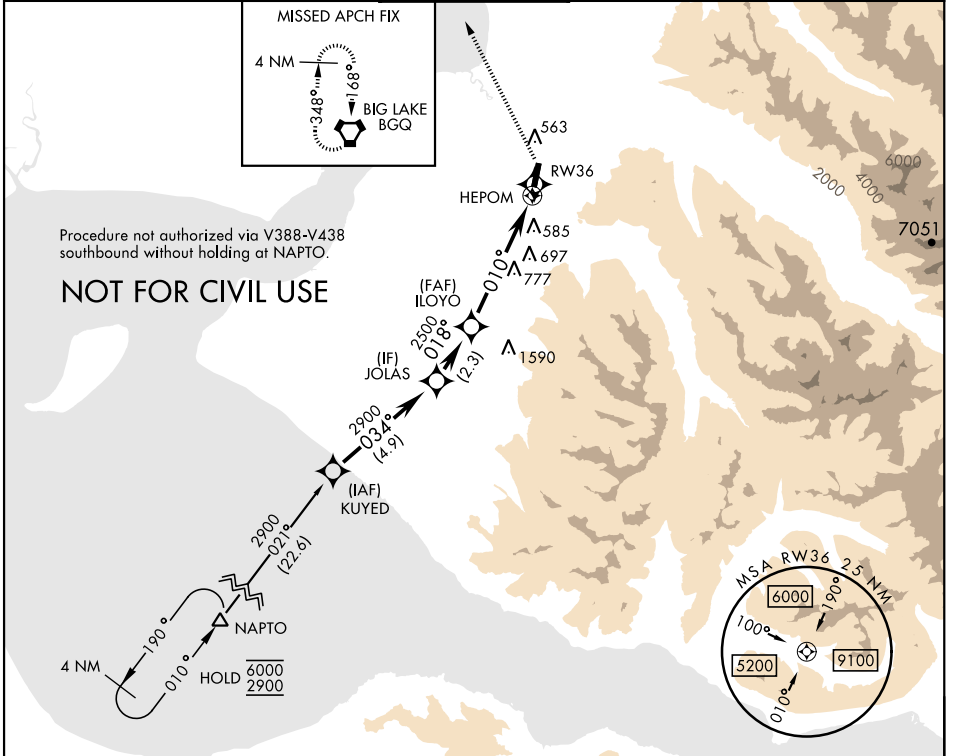
RNP APCH - GPS

▼ Rwy 36 helicopter visibility reduction below 3/4 mile not authorized.

* Circling not authorized E of Rwy 18-36.

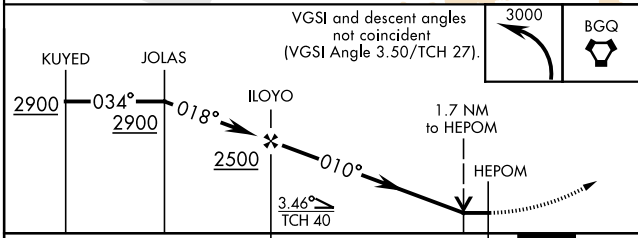
MISSED APPROACH: Climbing left turn to 3000 proceed direct BGQ VORTAC and hold.

AWOS-3 134.25	ANCHORAGE APP CON 118.6 290.5	TOWER ★ 125.0 (CTAF) 0254.35	GND CON 121.25 239.25	CLNC DEL 119.1 363.2
-------------------------	---	---	---------------------------------	--------------------------------



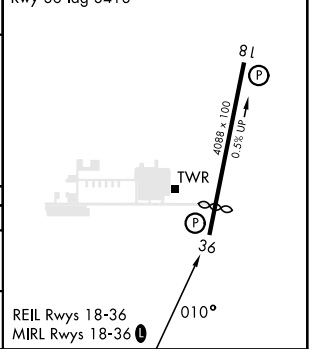
AK, 31 OCT 2024 to 26 DEC 2024

AK, 31 OCT 2024 to 26 DEC 2024



ELEV	387	TDZE	382
Rwy 36 ldg 3418'			

CATEGORY	A	B	C	D
LNVA MDA	1220-1 838 (900-1)	1220-1¼ 838 (900-1¼)	1220-2½ 838 (900-2½)	
CIRCLING *	1220-1¼ 833 (900-1¼)		1220-2½ 833 (900-2½)	1620-3 1233 (1300-3)



RNAV GPS RWY 36