

APP CRS	Rwy Idg	N/A
264°	TDZE	N/A
	Apt Elev	720

RNAV (GPS)-A

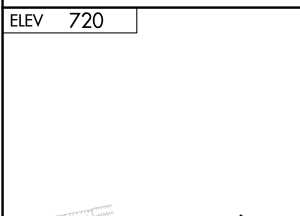
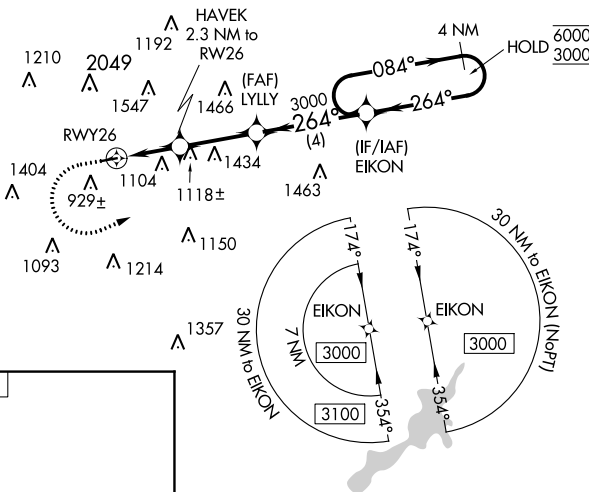
MORAINE AIR PARK (I73)

RNP APCH - GPS.		MISSED APPROACH: Climb to 1500 then climbing left turn to 3000 direct EIKON and hold.
<p>▼ Procedure NA at night.</p> <p>▲ NA Rwy 8 and 26 helicopter visibility reduction below 1 SM NA. Use Dayton-Wright Brothers altimeter setting.</p>		

MGY ASOS 118.375	COLUMBUS APP CON 118.85 269.275	UNICOM 122.7 (CTAF)
----------------------------	---	-------------------------------

EC-2, 28 NOV 2024 to 26 DEC 2024

EC-2, 28 NOV 2024 to 26 DEC 2024



	4 NM Holding Pattern			
HAVEK 2.3 NM to RW26 RW26 1780 4.11° TCH 40 2.3 NM 2.8 NM 4 NM	264° 084° 6000 3000 3000			
CATEGORY	A	B	C	D
CIRCLING	1440-1 720 (800-1)	1520-1 800 (800-1)	NA	