

|  |                        |   |             |
|--|------------------------|---|-------------|
| WAAS<br>CH <b>62837</b><br><b>W11A</b> | APP CRS<br><b>111°</b> | Rwy Idg<br>TDZE <b>721</b><br>Apt Elev <b>721</b> | <b>3850</b> |
|--|------------------------|---|-------------|

# RNAV (GPS) RWY 11

CYNTHIANA-HARRISON COUNTY (Ø18)

RNP APCH.

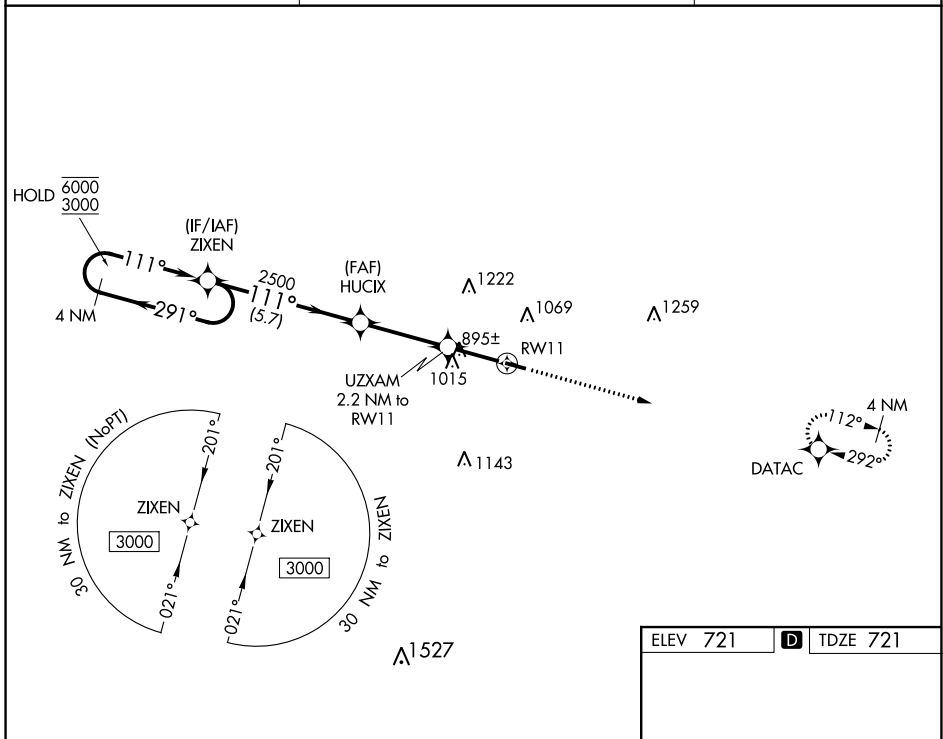
**▼** Procedure NA at night. Rwy 11 helicopter visibility reduction below 1 SM NA.  
**▲ NA** Use Georgetown altimeter setting; when not received, use Lexington altimeter setting and increase all MDA 40 feet.

MISSED APPROACH:  
Climb to 3000 direct  
DATAC and hold.

27K AWOS-3  
**119.975**

LEXINGTON APP CON  
**120.15 259.3** (040°-220°)  
**120.75 298.9** (221°-039°)

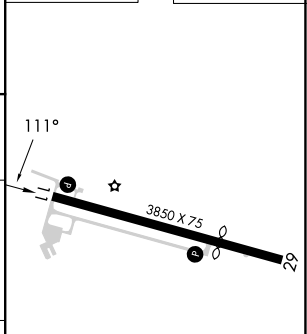
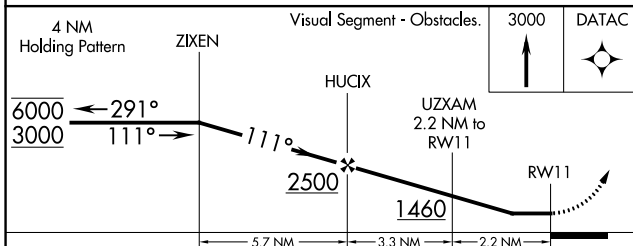
UNICOM  
**122.8** (CTAF) **Ø**



SE-1, 28 NOV 2024 to 26 DEC 2024

SE-1, 28 NOV 2024 to 26 DEC 2024

|          |                   |
|----------|-------------------|
| ELEV 721 | <b>D</b> TDZE 721 |
|----------|-------------------|



| CATEGORY          | A                     | B                       | C | D  |
|-------------------|-----------------------|-------------------------|---|----|
| LP MDA            | 1220-1                | 499 (500-1)             |   | NA |
| LNAV MDA          | 1300-1                | 579 (600-1)             |   | NA |
| <b>C</b> CIRCLING | 1340-1<br>619 (700-1) | 1560-1¼<br>839 (900-1¼) |   | NA |

MIRL Rwy 11-29 **Ø**  
REIL Rwy 11 and 29 **Ø**