

WAAS CH 90442 W10A	APP CRS 101°	Rwy Idg TDZE Apt Elev	4000 728 732
--	------------------------	-----------------------------	---

RNAV (GPS) RWY 10

BRECKINRIDGE COUNTY (I93)

RNP APCH.

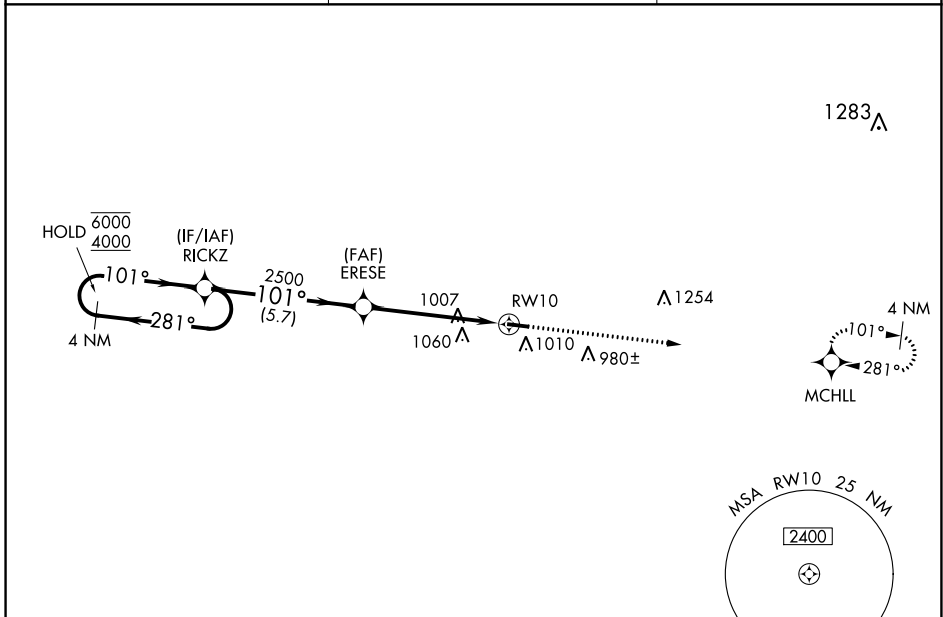
NA Rwy 10 helicopter visibility reduction below 3/4 SM NA.
Baro-VNAV NA. Use Fort Knox altimeter setting, when not received,
use Elizabethtown altimeter setting and increase LPV DA to 1043,
LNAV/VNAV DA to 1191 and all MDA 20 feet.

MISSED APPROACH: Climb to 4000 direct MCHLL and hold,
continue climb-in-hold to 4000.

KFTK ATIS ★
109.6

LOUISVILLE APP CON
132.075 327.0

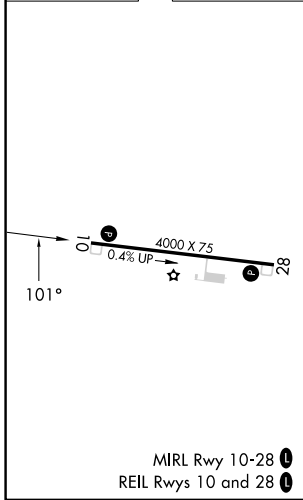
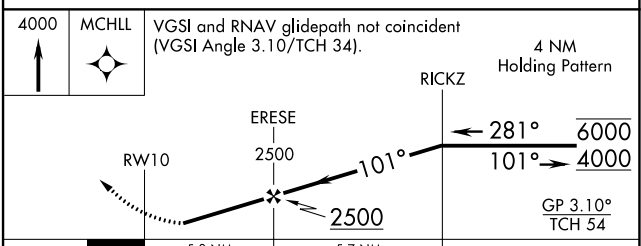
CTAF
122.9



SE-1, 28 NOV 2024 to 26 DEC 2024

SE-1, 28 NOV 2024 to 26 DEC 2024

ELEV 732	TDZE 728
----------	----------



CATEGORY	A	B	C	D
LPV DA		1036-1	308 (400-1)	
LNAV/VNAV DA		1184-1 3/8	456 (500-1 3/8)	
LNAV MDA	1380-1	652 (700-1)	1380-1 7/8	652 (700-1 7/8)
CIRCLING	1380-1 648 (700-1)	1480-1 748 (800-1)	1480-2 1/4 748 (800-2 1/4)	1480-2 1/2 748 (800-2 1/2)