

WAAS CH 82344 W09A	APP CRS 094°	Rwy Idg TDZE Apt Elev	3841 398 404
--	------------------------	-----------------------------	---

RNAV (GPS) RWY 9

FULTON (1M7)

RNP APCH - GPS.

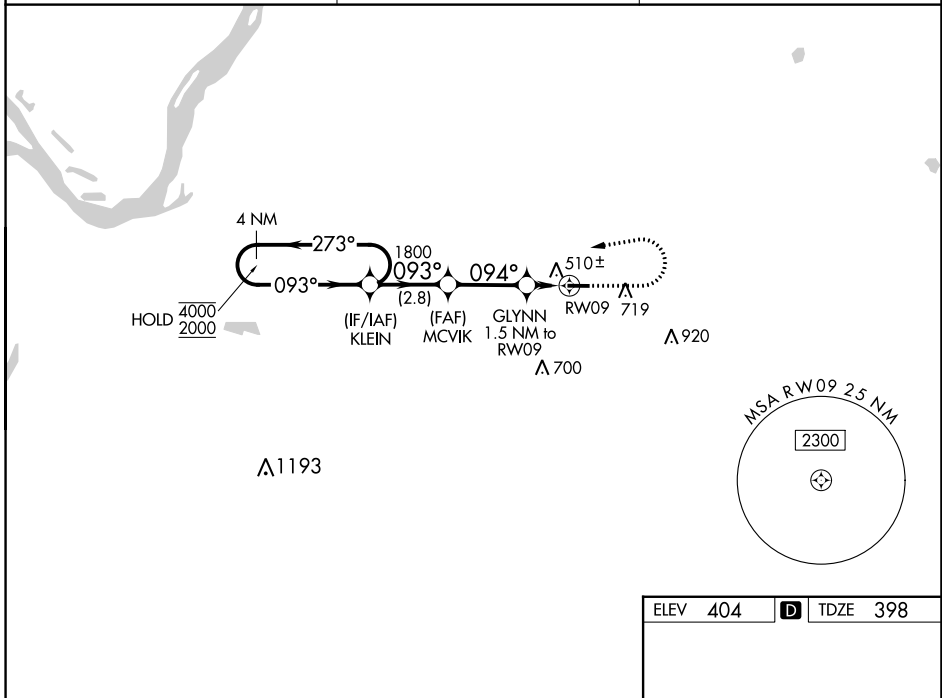
NA Circling NA south of Rwy 9-27. Circling Rwy 27 NA at night. Rwy 9 helicopter visibility reduction below 3/4 SM NA. Baro-VNAV NA. Use Union City altimeter setting; when not received, use Mayfield altimeter setting and increase LPV DA to 720, LNAV/VNAV DA to 759, and increase all MDAs 40 feet.

MISSED APPROACH: Climb to 900 then climbing left turn to 2000 direct KLEIN and hold.

UCY AWOS-3
135.325

MEMPHIS CENTER
133.65 292.15

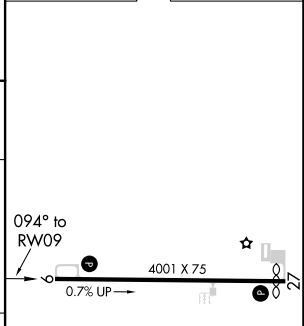
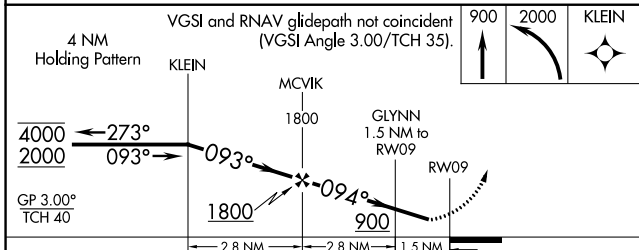
UNICOM
122.7 (CTAF)



SE-1, 28 NOV 2024 to 26 DEC 2024

SE-1, 28 NOV 2024 to 26 DEC 2024

ELEV 404	D	TDZE 398
-----------------	----------	-----------------



CATEGORY	A	B	C	D
LPV DA	682-1	284 (300-1)		NA
LNAV/VNAV DA	721-1	323 (400-1)		NA
LNAV MDA	800-1	402 (400-1)		NA
C CIRCLING	920-1 516 (600-1)	1000-1 596 (600-1)		NA

HIRL Rwy 9-27 **1**
REIL Rwy 9-27 **1**