

| | | |
|------------------------|-----------------------------|--------------------------------------|
| APP CRS 189° | Rwy Idg TDZE Apt Elev | NA NA 106 |
|------------------------|-----------------------------|--------------------------------------|

RNAV (GPS)-B

UMATILLA MUNI (X23)

RNP APCH - GPS.

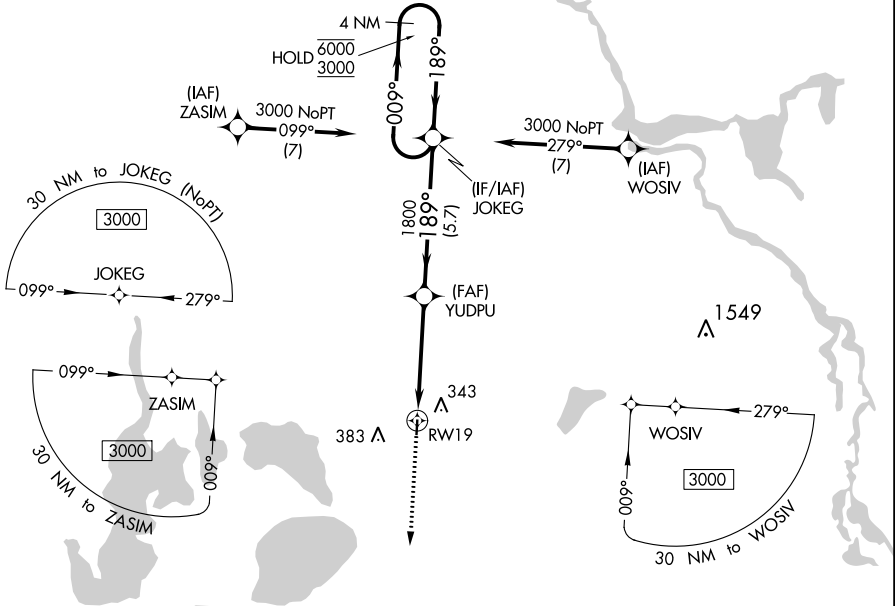
Procedure NA at night.
 NA Rwy 1, 19 helicopter visibility reduction below 1 SM NA.
 Use Leesburg altimeter setting.

MISSED APPROACH: Climb to 3000 direct TENUY and hold, continue climb-in-hold to 3000.

LEE ASOS
134.325

ORLANDO APP CON
135.3 351.9

CTAF
122.9



SE-3, 28 NOV 2024 to 26 DEC 2024

SE-3, 28 NOV 2024 to 26 DEC 2024

