

| | | |
|---------------------------------|------------------------|--|
| WAAS CH 93740 W24A | APP CRS 240° | Rwy Idg TDZE 6051 7913 Apt Elev 7955 |
|---------------------------------|------------------------|--|

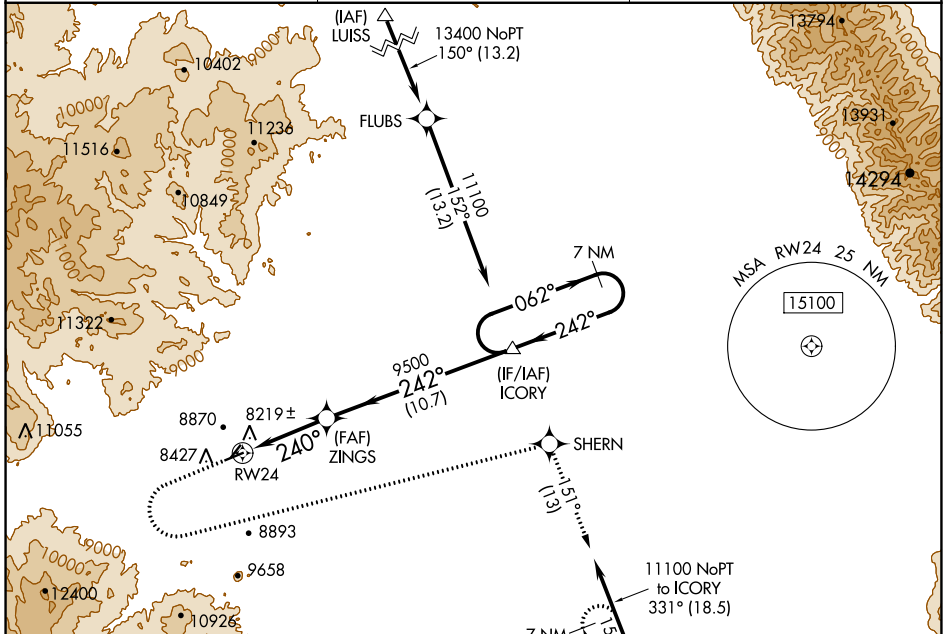
RNAV (GPS) RWY 24

ASTRONAUT KENT ROMINGER (RCV)

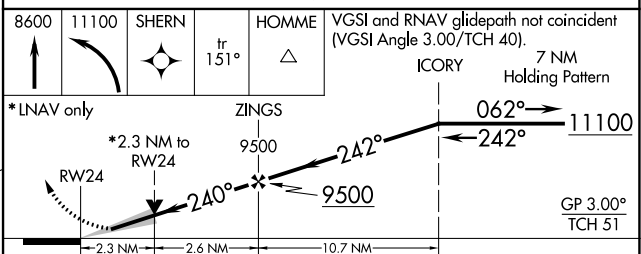
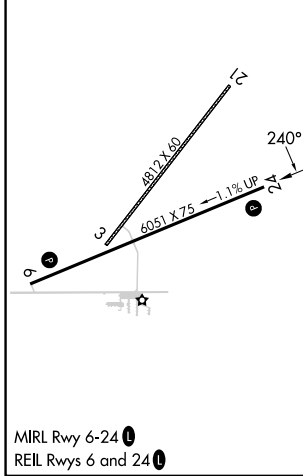
⚠ For uncompensated Baro-VNAV systems, LNAV/VNAV NA below -30°C (-22°F) or above 54°C (130°F). Circling NA northwest of Rwy 6-24. Circling Rwy 6 NA at night. DME/DME RNP-0.3 NA. Circling NA to Rwy 3/21.

⚠ MISSED APPROACH: Climb to 8600 then climbing left turn to 11100 direct SHERN and on track 151° to HOMME and hold. #Missed approach requires a minimum climb of 310 feet per NM to 9200.

| | | |
|----------------------------|--|----------------------|
| AWOS-3PT 118.275 | DENVER CENTER 128.375 379.95 | CTAF 122.9 |
|----------------------------|--|----------------------|



| | |
|-----------|-----------|
| ELEV 7955 | TDZE 7913 |
|-----------|-----------|



| CATEGORY | A | B | C | D |
|-------------------|-----------------------|-------------------------|---|----|
| LPV DA # | 8163-1 | 250 (300-1) | | NA |
| LPV DA | 8220-1½ | 307 (300-1½) | | NA |
| LNAV/VNAV DA | 8443-1⅞ | 530 (500-1⅞) | | NA |
| LNAV MDA | 8680-1 767 (800-1) | 8680-1¼ 767 (800-1¼) | | NA |
| C CIRCLING | 8700-1 745 (800-1) | 8840-1¼ 885 (900-1¼) | | NA |

SW-1, 28 NOV 2024 to 26 DEC 2024

SW-1, 28 NOV 2024 to 26 DEC 2024