

COPTER RNAV (GPS) RWY 24

APCH CRS	Rwy Idg	6668
244°	TDZE	16
	Arpt Elev	16

[USA]

BUCHOLZ AAF (PKWA)

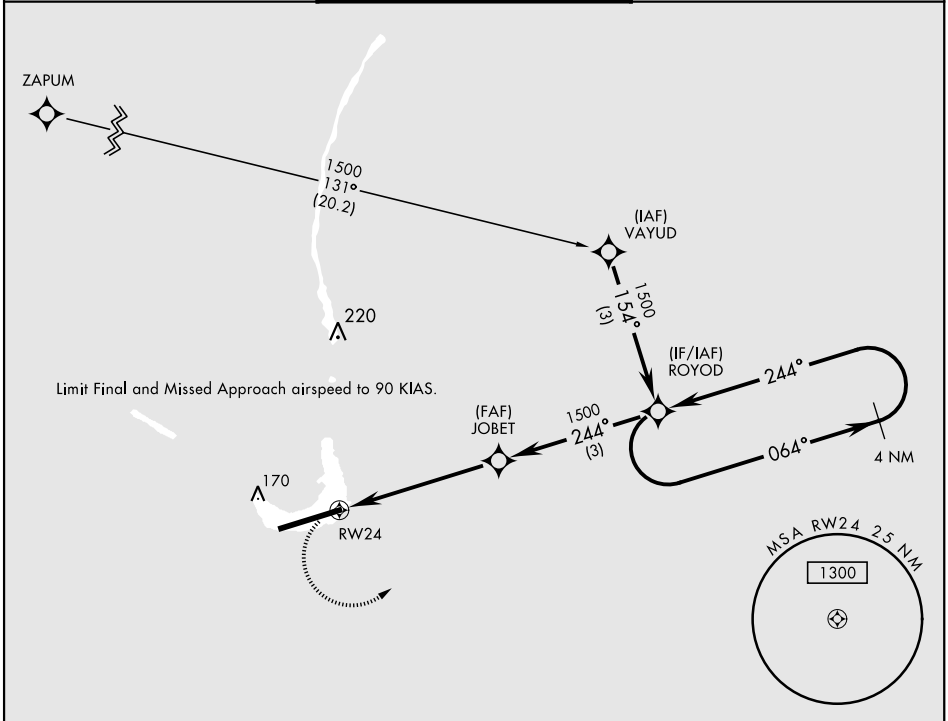
▼ When control tower closed, obtain local altimeter setting from Base Ops on 118.8.
DME/DME RNP-0.3 NA

MISSED APPROACH: Climbing left turn to 1500 direct ROYOD and hold.

AWOS
119.675

TOWER ★
126.2 360.2

GND CON
121.9



PAC, 31 OCT 2024 to 26 DEC 2024

PAC, 31 OCT 2024 to 26 DEC 2024

	ELEV	16	TDZE	16	
--	------	----	------	----	--

1500 **ROYOD** TA 5500

VGSI and Descent Angles not coincident.

4 NM holding pattern

3.39° MDA

CATEGORY	COPTER			HIRL Rwy 6-24
LNAV MDA	440-1/2	424	(500-1/2)	REL Rwy 6

COPTER RNAV (GPS) RWY 24