

WAAS CH 93943 W22A	APP CRS 224°	Rwy Idg TDZE Apt Elev	4502 2339 2356
--	------------------------	-----------------------------	---

RNAV (GPS) RWY 22

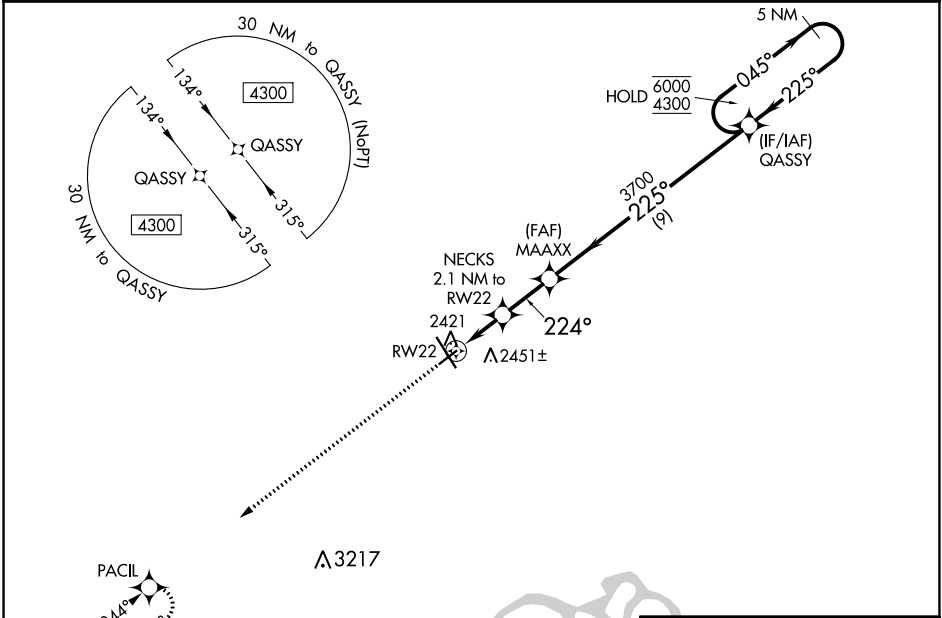
WILLISTON BASIN INTL (XWA)

RNP APCH-GPS.

▽
▲ For uncompensated Baro-VNAV systems, LNAV/VNAV NA below -19°C or above 54°C.

MISSED APPROACH: Climb to 4300 direct PACIL and hold.

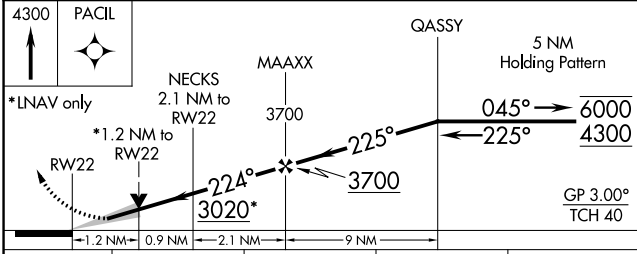
ASOS 125.925	SALT LAKE CITY CENTER 126.85 305.2	UNICOM 122.8 (CTAF) 0
------------------------	--	---------------------------------



NC-1, 28 NOV 2024 to 26 DEC 2024

NC-1, 28 NOV 2024 to 26 DEC 2024

ELEV 2356	D TDZE 2339
-----------	--------------------



CATEGORY	A	B	C	D
LPV DA		2539-1	200 (200-1)	
LNAV/VNAV DA		2589-1	250 (300-1)	
LNAV MDA	2740-1	401 (400-1)	2740-1 1/8	401 (400-1 1/8)
C CIRCLING	2760-1 404 (500-1)	2820-1 464 (500-1)	2820-1 1/2 464 (500-1 1/2)	2920-2 564 (600-2)

