

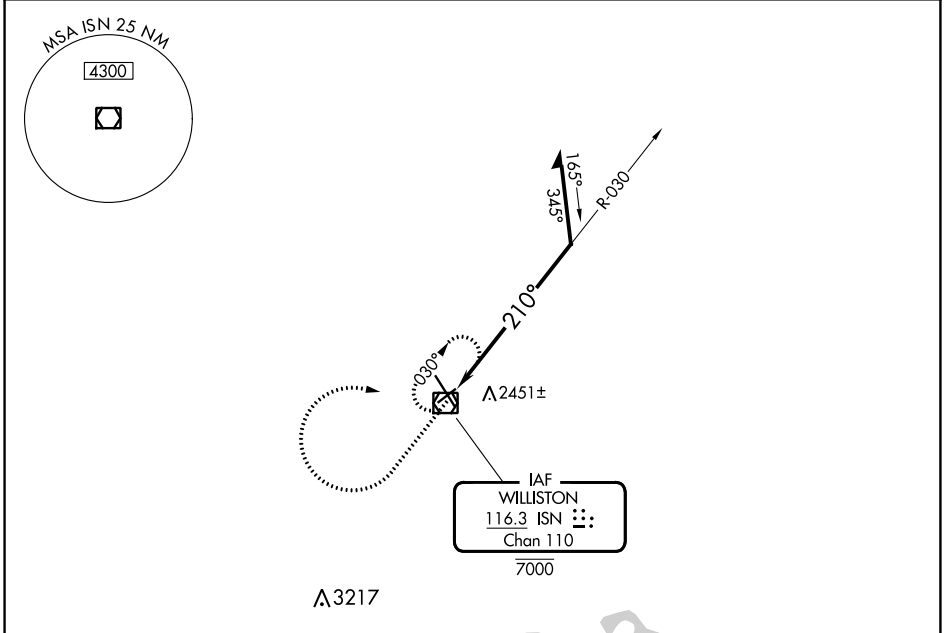
VOR/DME ISN <b>116.3</b> Chan <b>110</b>	APP CRS <b>210°</b>	Rwy Idg TDZE Apt Elev	<b>4502</b> <b>2339</b> <b>2356</b>
--	------------------------	-----------------------------	---

# VOR RWY 22

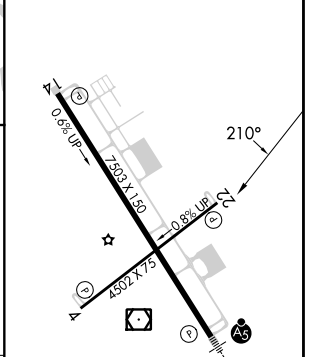
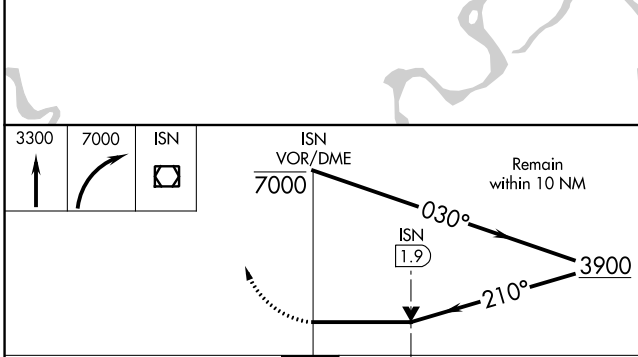
WILLISTON BASIN INTL (XWA)

**⚠** MISSED APPROACH: Climb to 3300 then climbing right turn to 7000 direct ISN VOR/DME and hold, continue climb-in-hold to 7000.

ASOS <b>125.925</b>	SALT LAKE CITY CENTER <b>126.85 305.2</b>	UNICOM <b>122.8 (CTAF) 0</b>
------------------------	--	---------------------------------



ELEV 2356	<b>D</b> TDZE 2339
-----------	--------------------



CATEGORY	A	B	C	D
S-22	2760-1	421 (500-1)	2760-1¼	421 (500-1¼)
<b>C</b> CIRCLING	2760-1 404 (500-1)	2820-1 464 (500-1)	2820-1½ 464 (500-1½)	2920-2 564 (600-2)

MIRL Rwy 4-22 **0**  
 HIRL Rwy 14-32 **0**  
 REIL Rwy 4, 14 and 22 **0**

NC-1, 28 NOV 2024 to 26 DEC 2024

NC-1, 28 NOV 2024 to 26 DEC 2024