

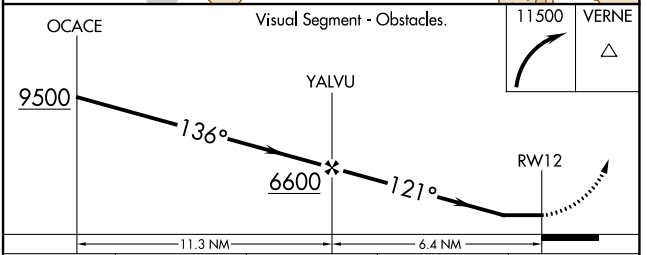
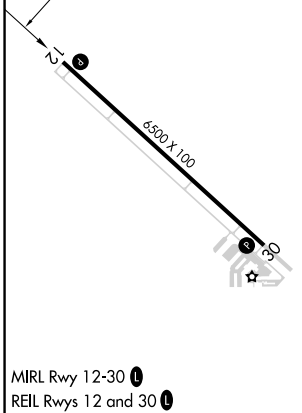
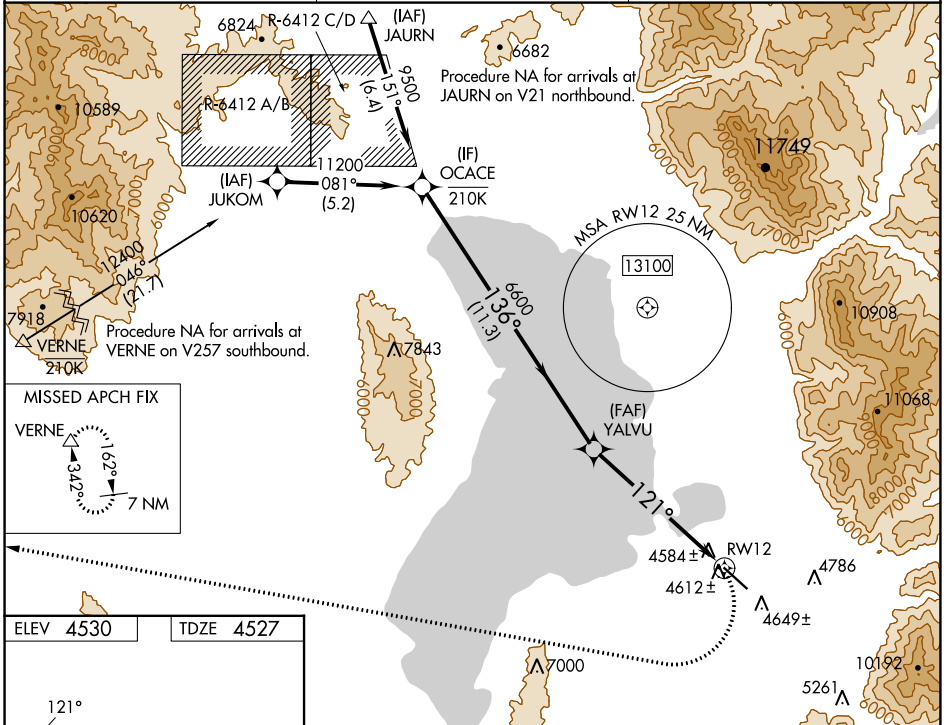
WAAS CH <b>78042</b> W12A	APP CRS <b>121°</b>	Rwy Idg TDZE Apt Elev	<b>6500</b> <b>4527</b> <b>4530</b>
---------------------------------	------------------------	-----------------------------	-------------------------------------------

# RNAV (GPS) Y RWY 12

SPANISH FORK MUNI/WOODHOUSE FLD (SPK)

RNP APCH-GPS.	MISSED APPROACH: (Do not exceed 185K until turn completion) Climbing right turn to 11500 direct VERNE and hold.
<p>▼ Rwy 12 helicopter visibility reduction below 3/4 SM NA.</p> <p>▲ NA When local altimeter setting not received, use Provo altimeter setting and increase all MDAs 20 feet.</p> <p>☁ -21°C</p>	

AWOS-3PT <b>119.275</b>	SALT LAKE CITY APP CON <b>118.85 233.7</b>	CTAF <b>122.9</b>
----------------------------	-----------------------------------------------	----------------------



CATEGORY	A	B	C	D
LP MDA	6040-1/4 1513 (1600-1/4)	6040-1/2 1513 (1600-1/2)	6040-3	1513 (1600-3)
LNAV MDA	6160-1/4 1633 (1700-1/4)	6160-1/2 1633 (1700-1/2)	6160-3	1633 (1700-3)
CIRCLING	6160-1/4 1630 (1700-1/4)	6160-1/2 1630 (1700-1/2)	6160-3	1630 (1700-3)

SW-4, 28 NOV 2024 to 26 DEC 2024

SW-4, 28 NOV 2024 to 26 DEC 2024