

WAAS CH 82342 W12B	APP CRS 121°	Rwy Idg TDZE 4527 Apt Elev 4530
--	------------------------	---

RNAV (GPS) Z RWY 12

SPANISH FORK MUNI/WOODHOUSE FLD (SPK)

RNP APCH - GPS.

⚠ Rwy 12 helicopter visibility reduction below 3/4 SM NA. When local altimeter setting not received, use Provo altimeter setting and increase all MDAs 20 feet.

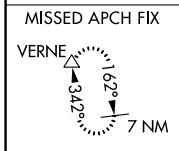
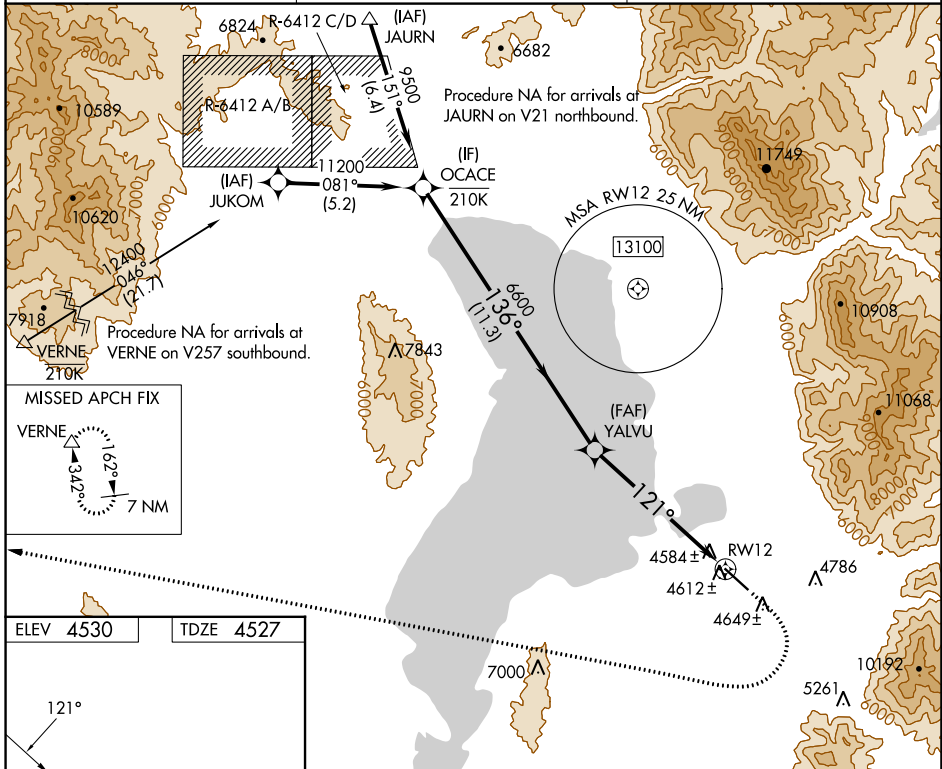
⚠ NA

⚠ -21°C

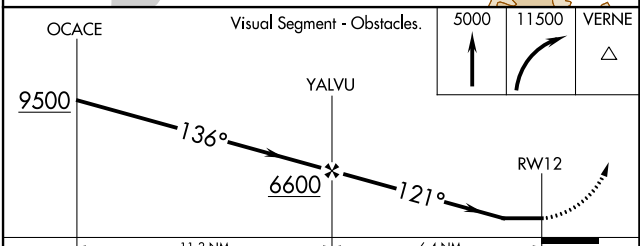
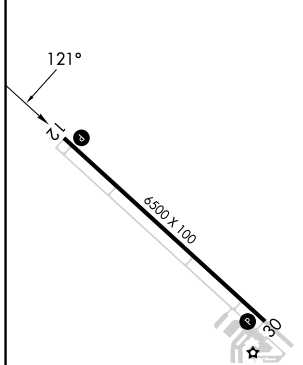
MISSED APPROACH: (Do not exceed 185K until VERNE) Climb to 5000 then climbing right turn to 11500 direct VERNE and hold.

*Missed approach requires minimum climb of 380 feet per NM to 7600; if unable to meet climb gradient, see RNAV (GPS) Y RWY 12.

AWOS-3PT 119.275	SALT LAKE CITY APP CON 118.85 233.7	CTAF 122.9
----------------------------	---	----------------------



ELEV 4530	TDZE 4527
------------------	------------------



CATEGORY	A	B	C	D
LP MDA*	4880-1 353 (400-1)			
LNAV MDA*	4900-1 373 (400-1)			

MIRL Rwy 12-30 **ⓘ**
REIL Rwy 12 and 30 **ⓘ**

SW-4, 28 NOV 2024 to 26 DEC 2024

SW-4, 28 NOV 2024 to 26 DEC 2024