

APP CRS 126°	Rwy Idg TDZE Apt Elev 462	N/A N/A 462
------------------------	---	--

RNAV (GPS)-A

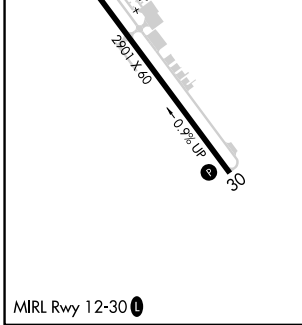
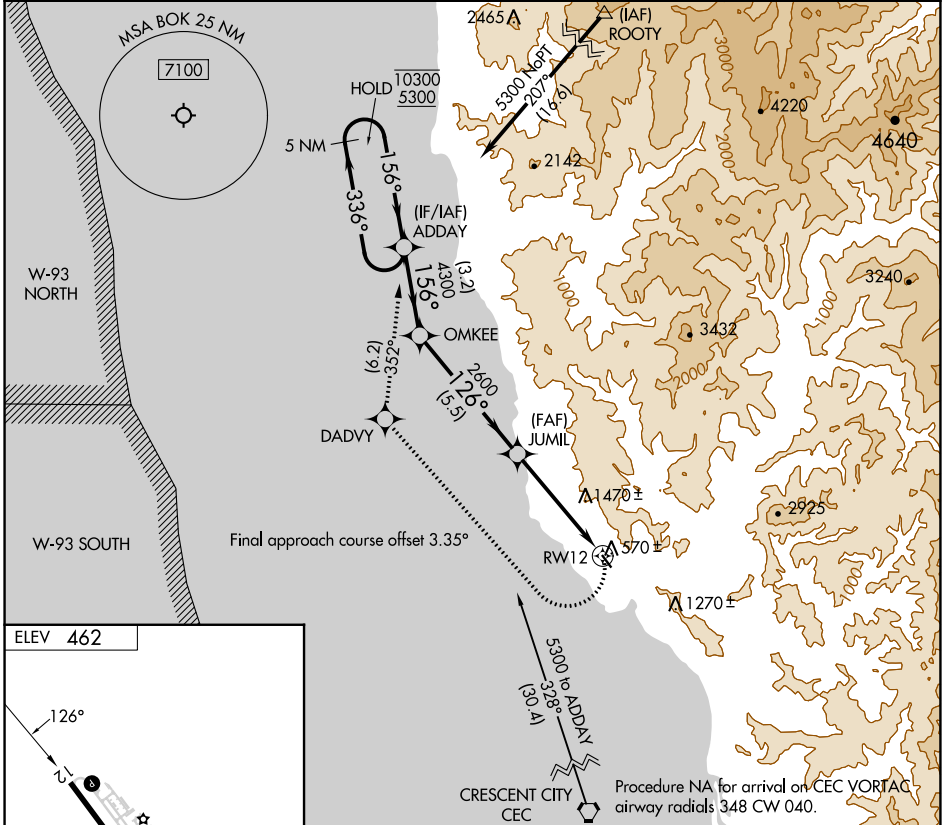
BROOKINGS (BOK)

RNP APCH - GPS.

Procedure NA at night. Circling NA northeast of Rwy 12-30.
Rwy 12 and 30 helicopter visibility reduction below 1 SM NA.

MISSED APPROACH: Climbing right turn to 5300 direct DADVY, and on track 352° to ADDAY and hold, continue climb in hold to 5300.

AWOS-3PT 132.025	SEATTLE CENTER 124.85 306.3	UNICOM 122.8 (CTAF)
----------------------------	---------------------------------------	-------------------------------



5 NM Holding Pattern	ADDAY	OMKEE	JUMIL	RW12
10300 5300	← 336° → 156°	156°	126°	4.15° TCH 40
	3.2 NM	5.5 NM	4.8 NM	
CATEGORY	A	B	C	D
CIRCLING	1600-1¼ 1138 (1200-1¼)	1600-1½ 1138 (1200-1½)	NA	

NW-1, 28 NOV 2024 to 26 DEC 2024

NW-1, 28 NOV 2024 to 26 DEC 2024