

KING SALMON (AKN)(PAKN) P (AF) O SE UTC-9(-8DT) N58°40.59' W156°38.92'

KODIAK

73 B ARFF Index—See Remarks NOTAM FILE AKN

H-1B, 2I, L-21, 3C

RWY 12-30: H8901X150 (ASPH-GRVD) S-120, D-175, 2S-175,

IAP, DIAP, AD

2D-250, 2D/2D2-400 PCR 543 F/B/X/T HIRL

RWY 12: MALS. PAPI(P4L)—GA 3.0° TCH 66'. RVR-T

RWY 30: PAPI(P4L)—GA 3.0° TCH 45'. RVR-R

RWY 18-36: H4017X100 (ASPH-GRVD) S-30, D-50

PCR 543 F/B/X/T MIRL

RWY 18: Trees.

RUNWAY DECLARED DISTANCE INFORMATION

RWY 12: TORA-8901 TODA-8901 ASDA-8501 LDA-8501

RWY 30: TORA-8901 TODA-8901 ASDA-8501 LDA-8501

ARRESTING GEAR/SYSTEM

RWY 12 BAK-12 1190 FT FM THR; **RWY 12** BAK-12 REQ 30 MIN

NOTICE 950 FT RUNOUT.

BAK-12 1340 FT FM THR; **BAK-12** REQ 30 MIN NOTICE 1200 FT
RUNOUT. **RWY 30**

SERVICE: S4 **FUEL** 100LL, JET A **LGT** When ATCT clsd ACTVT MALS

Rwy 12; PAPI Rwy 12 and 30; MIRL Rwy 18-36; HIRL Rwy

12-30—CTAF.

AIRPORT REMARKS: Attended 1600-0200Z†. TSA reg arpt; See 49 CFR

1542. All gates and doors rmn secure at all times. Tsnt or unfamiliar pilots—AMGR for info. Class I, ARFF Index B. Clsd to acr ops with more than 30 pax seats exc PPR in writing—AMGR PO Box 65, King Salmon, AK 99613. ARFF equip staffed durg acr act only. Rwy 18-36 not inspd for mil ops. Acr ops with more than 30 pax seats NA. 1 in dip on cntrln 1850 ft fm AER 36 extds to 3 in dip 25 ft wide on W edge. ARFF is avbl for part 121 acr involved in ETOPS with 30 min notice. GA apron pavement crumbling, psbl fod haz. Jet acft be alert durg run up to avoid jet wash dmg. Arpt hazard reporting only performed for 30 pax seat acft. Snow/ice removal and arpt haz cond rprtd durg atnd hr. 600' safety area AER 12. Flocks of large migratory birds in vicinity during season. Locked wheel turn NA all scls. Off pavement ops by acft and hel NA at Acr Apron. Lndg, tkof or prkg frm dirt or grass NA. No ldg, parking or tkfs permitted from dirt or grass. Twy P clsd. Apron slots 4-7 N of mil hangar clsd exc prop acft. Civ tsnt prkg on SE ramp only; otr prkg grtr than 48 hrs rqrs permit. Pvt jets prkg on the SE section of E Ramp—AMGR for info. No cstm avbl. USAF fac civ oprd with ltd support; Call 24 hr prior to arr for ops hr; Mil confirm fuel rqmnts 24-48 hr prior. Mil fighter/emerg dvrsn ctc Warrior/Elmendorf SOF 395.15; Non fighter/emerg ctc King Salmon Ops. 24 hr point mnts CTAF durg ops hr. Fighter acft exp rcdcd sepn; similar apch charcs and dalgt 3000'; dissimilar apch charcs and ngt 6000'; ahd/bhnd frmn lndg 6000'. Rwy 12 touchdown RVR avbl Aug 1-Jun 14 1700-0500Z† 15 Jun-31 Jul 1700-0700Z†. RCR durg 11th AF ftr flying window. Coord RCR checks with King Salmon Ops 907-439-3001/907-439-6000. Ops rstrd to low apch apch/FSL only. Flgts orig outside AK refer to USAF FCG; cstm not avbl. NWS bln launch fac on arpt; see inside back cover for ops detail. Business jet prkg grtr than 1 hr 48 hr PPR.

AIRPORT MANAGER: 907-246-3325

WEATHER DATA SOURCES: ASOS 128.8 (907) 246-7506. (WX CAM)

COMMUNICATIONS: CTAF 352.05 121.9 **UNICOM** 122.95 **ATIS** 128.8

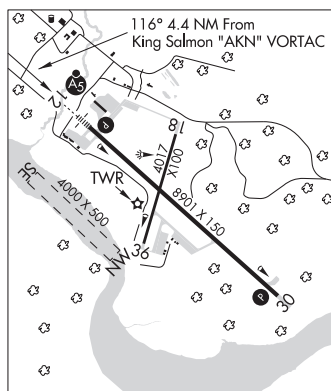
RCO 122.2 121.9 Freq 121.9 avbl when twr clsd. (KENAI FSS)

ANCHORAGE CENTER APP/DEP CON 354.0 124.8

TOWER 279.5 118.3 (1 Aug-14 Jun 1700-0500Z†, 15 Jun-31 Jul 1700-0700Z†). **GND CON** 121.9

PTD 372.2

AIRSPACE: CLASS D svc 1700-0500Z† Aug 1-Jun 14, 1700-0700Z† Jun 15-Jul 31; other times CLASS E.



CONTINUED ON NEXT PAGE

CONTINUED FROM PRECEDING PAGE

RADIO AIDS TO NAVIGATION: NOTAM FILE AKN.(H) (H) **VORTAC** 112.8 AKN Chan 75 N58°43.48' W156°45.14' 116° 4.4 NM to fld. 95/16E.

TACAN antenna offset 150' se

TACAN AZIMUTH unusable:

130°-140° byd 13 NM blo 4,000'

130°-140° byd 30 NM

332°-348° byd 19 NM blo 5,000'

DME unusable:

332°-348° byd 19 NM blo 5,000'

CHINOOK NDB (HW) 355 AUB N58°44.23' W156°46.70' 121° 5.5 NM to fld. 66/11E.**ILS/DME** 110.3 I-AKN Chan 40 Rwy 12. Class IE. Glideslope autopilot coupled approach not authorized below 700' MSL. ILS glideslope not coincident with PAPI. (radar monitoring not avbl for ILS GS). Localizer backcourse unusable byd 20° right of course.**COMM/NAV/WEATHER REMARKS:** For a toll free call to Kenai FSS dial 1-866-864-1737. CTAF frequency 121.9 simulcast with 352.05. Freq 118.3 unavbl when twr clsd.**WATERWAY NW-SE:** 4000X500 (WATER)**SEAPLANE REMARKS:** Attended Mon-Fri 1700-0100Z. Deployed/transient Air Defense Alert FTRS may scramble at any time. Flocks of lrg birds invof durg season. 100LL and Jet A avbl at seaplane base fm fuel truck or UNICOM 122.95. Rwy NW-SE also used by boats.**KIPNUK** (IIK)(PAKI) 0 SE UTC-9(-8DT) N59°55.90' W164°01.69'

20 NOTAM FILE IIK

RWY 17-35: 3200X60 (GRVL) MIRL**RWY 35:** Rgt tfc.**SERVICE:** LGT ACTIVATE MIRL RWY 17-35—CTAF. Emergency rwy lgts: contact Kipnuk Village Council at 907-896-5515.**AIRPORT REMARKS:** Unattended. Rwy condition not monitored, recommend visual inspection prior to using. Frequent crosswinds. Windssock unreliable. Heavy bird activity near rwy. Irregular surfaces full length of rwy. Dips and ponding full length of twy. Wind turbine farm 0.5 NM NW of arpt unlighted.**AIRPORT MANAGER:** 907-543-2495**WEATHER DATA SOURCES:** AWOS-3P 118.325 (907) 896-5510.**COMMUNICATIONS:** CTAF 122.7

RCO 122.6 (KENAI RADIO)

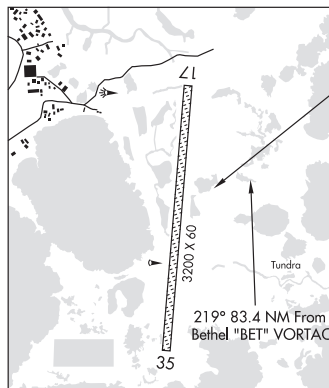
Ⓡ **ANCHORAGE CENTER APP/DEP CON** 125.2**RADIO AIDS TO NAVIGATION:** NOTAM FILE BET.**BETHEL (H) (H) VORTAC** 114.1 BET Chan 88 N60°47.09'

W161°49.46' 219° 83.4 NM to fld. 105/14E.

COMM/NAV/WEATHER REMARKS: For a toll free call to Kenai FSS dial 1-866-864-1737.**BETHEL**

L-3B

IAP

**KITOI BAY SPB** (KKB) 0 NE UTC-9(-8DT) N58°11.46' W152°22.23'

00 NOTAM FILE ADQ

WATERWAY E-W: 4000X1000 (WATER)**AIRPORT REMARKS:** Unattended. E-W prevailing winds. Gravel beaching area next to dock with rocks up to 12". Heavy bird act invof ldg area. Ctc mgr alternate number: 907-486-6555.**AIRPORT MANAGER:** 877-628-4449**COMMUNICATIONS:** CTAF 122.8**RADIO AIDS TO NAVIGATION:** NOTAM FILE ADQ.**WOODY ISLAND NDB (HW)** 394 RWO N57°46.49' W152°19.48' 343° 25.1 NM to fld. 24/14E.**KODIAK**