

## LAZY BAY

**ALITAK SPB** (ALZ) 0 S UTC-9(-8DT) N56°53.77' W154°14.81'

KODIAK

00 NOTAM FILE ENA

**WATERWAY 12W-30W:** 6000X150 (WATER)

**WATERWAY 17W-35W:** 4000X150 (WATER)

**SEAPLANE REMARKS:** Unattended. Bird act invof arpt. E-W pvlg winds, E winds subject to swells. Grvl beaching area E of cannery. Beaching area dock, hazus. Ltd summer para gldr act.

**AIRPORT MANAGER:** 907-771-4800

**COMMUNICATIONS: CTAF** 122.8

**RADIO AIDS TO NAVIGATION:** NOTAM FILE ADQ.

**KODIAK (H) (H) VORW/DME** 117.1 ODK Chan 118 N57°46.50' W152°20.39' 216° 81.5 NM to fld. 133/14E.

VOR unusable:

190°-310° byd 15 NM blo 12,000'

DME unusable:

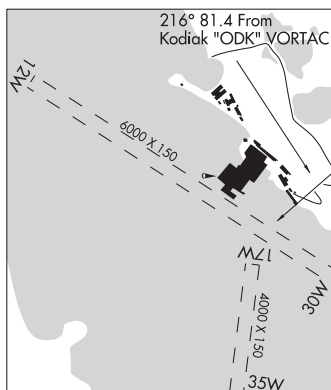
154°-265° byd 15 NM blo 12,000'

266°-305°

306°-341° byd 15 NM blo 12,000'

**COMM/NAV/WEATHER REMARKS:** For a toll free call to Kenai FSS dial

1-866-864-1737.



**LEVEL ISLAND** N56°28.06' W133°04.99' NOTAM FILE SIT.

JUNEAU

(H) (H) VORW/DME 116.5 LVD Chan 112 229° 19.3 NM to Point Baker. 98/20E.

H-1C, L-1C

VOR unusable:

020°-050° byd 37 NM

270°-300° byd 25 NM blo 10,000'

301°-321° byd 25 NM blo 7,000'

wx cam avbl at <https://weathercams.faa.gov>

DME unusable:

020°-050° byd 25 NM blo 11,000'

020°-050° byd 37 NM

105°-120° byd 29 NM blo 10,000'

121°-135° byd 35 NM blo 7,000'

270°-300° byd 25 NM blo 10,000'

301°-321° byd 25 NM blo 7,000'

345°-350° byd 36 NM blo 8,000'

**RCO** 122.3 (SITKA RADIO)

**LEVELOCK** (9Z8) 1 NNW UTC-9(-8DT) N59°07.63' W156°51.59'

KODIAK

56 B NOTAM FILE ENA

L-2I, 3C

**RWY 01-19:** 3284X60 (GRVL-DIRT) MIRL

**RWY 01:** Brush.

**RWY 19:** Brush.

**SERVICE:** LGT ACTIVATE MIRL Rwy 01-19 and rotating bcn—CTAF.

**AIRPORT REMARKS:** Unattended. Rwy condition not monitored. Recommend visual inspection prior to ldg. Rwy 01-19 and shoulders soft and muddy when wet. Multiple 2"-4" ruts on rwy edges and circular ruts near rwy thlds. Windsocks in soft soil, may be unreliable. Safety areas byd thlds sinking soft sand use only as emergency overrun.

**AIRPORT MANAGER:** 907-246-3325

**COMMUNICATIONS: CTAF** 122.9 **UNICOM** 122.95

**RADIO AIDS TO NAVIGATION:** NOTAM FILE AKN.

**KING SALMON (H) (H) VORTACW** 112.8 AKN Chan 75 N58°43.48' W156°45.14' 336° 24.4 NM to fld. 95/16E.

TACAN antenna offset 150' se

TACAN AZIMUTH unusable:

130°-140° byd 13 NM blo 4,000'

130°-140° byd 30 NM

332°-348° byd 19 NM blo 5,000'

DME unusable:

332°-348° byd 19 NM blo 5,000'

**COMM/NAV/WEATHER REMARKS:** For a toll free call to Kenai FSS dial 1-866-864-1737.

