

SOLDOTNA HOSPITAL HELIPORT (SD1) 1 NW UTC-9(-8DT) N60°29.56' W151°04.74'

ANCHORAGE

99 NOTAM FILE ENA

HELIPAD H1: H80X80 (ASPH) PERIMETER LGTS

SERVICE: LGT Helipad H1 perimeter lgts.

HELIPORT REMARKS: Attended continuously. Ops ovr hospital na.

AIRPORT MANAGER: 907-714-4404

COMMUNICATIONS: CTAF 122.5

RADIO AIDS TO NAVIGATION: NOTAM FILE ENA.

KENAI (H) (H) VOR/DME 117.6 ENA Chan 123 N60°36.88'

W151°11.71' 136° 8.1 NM to fld. 115/19E.

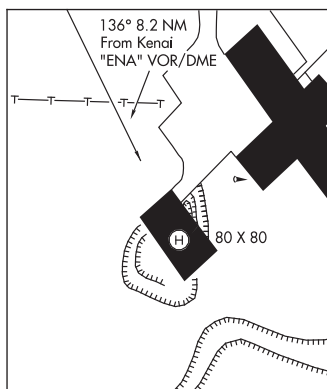
VOR unusable:

348°-015° byd 20 NM

DME unusable:

355°-041° byd 35 NM blo 2,000'

COMM/NAV/WEATHER REMARKS: For a toll free call to Kenai FSS dial 1-866-864-1737.



SOLOY STRIP (See WASILLA on page 261)

SONGLO VISTA (See TALKEETNA on page 236)

SOUTH NAKNEK NR 2 (WSN)(PFWS) 1 SSW UTC-9(-8DT) N58°42.13' W157°00.16'

KODIAK

L-21, 3C

IAP

162 B NOTAM FILE WSN

RWY 13-31: 3314X60 (GRVL-DIRT) HIRL

RWY 13: VASI(V2L)—GA 3.0° TCH 25'. Brush.

RWY 31: Thld displcd 559'. Brush.

RWY 05-23: 2264X60 (GRVL-DIRT) HIRL 1.5% up SW

RWY 05: Brush.

RWY 23: Brush.

SERVICE: LGT ACTVT VASI Rwy 13; HIRL Rwy 05-23 and 13-31—CTAF.

AIRPORT REMARKS: Unattended. Rwy cond unmnt, rcmdnd visual insp prior to use. Vehicles, moose and bears on and invov rwys. Hvy tfc btn S Naknek and Naknek arpts less than two mi apart. Twy slps downhill to NW; no line of sight btn end of twy and Rwy 13-31. Rwy 31 marked short cones and lights.

AIRPORT MANAGER: 907-246-3325

WEATHER DATA SOURCES: AWOS-3P 121.575 (907) 868-7348. (WX CAM)

COMMUNICATIONS: CTAF 122.9

® ANCHORAGE CENTER APP/DEP CON 124.8

RADIO AIDS TO NAVIGATION: NOTAM FILE AKN.

KING SALMON (H) (H) VORTACW 112.8 AKN Chan 75

N58°43.48' W156°45.14' 244° 7.9 NM to fld. 95/16E.

TACAN antenna offset 150' se

TACAN AZIMUTH unusable:

130°-140° byd 13 NM blo 4,000'

130°-140° byd 30 NM

332°-348° byd 19 NM blo 5,000'

DME unusable:

332°-348° byd 19 NM blo 5,000'

COMM/NAV/WEATHER REMARKS: For a toll free call to Kenai FSS dial 1-866-864-1737.

