

BARTER ISLAND (BTI)(PABA) 1 NNE UTC-9(-8DT) N70°06.79' W143°39.22'

POINT BARROW

55 B NOTAM FILE BTI

H-1A, L-4J

RWY 07-25: 4500X100 (GRVL) MIRL IAP

RWY 07: REIL. PAPI(P2L)—GA 3.0° TCH 31'. Road.

RWY 25: REIL. PAPI(P2L)—GA 3.0° TCH 30'.

SERVICE: LGT ACTVT MIRL Rwy 07-25, REIL Rwy 07 and Rwy 25—CTAF. PAPI Rwy 07 and Rwy 25 opr consly.

AIRPORT REMARKS: Attended 1500-0900Z. Gulls, waterfowl and bears invof arpt Spring-Fall. Rwy unmnt; rcmd visual insp prior to lndg.

AIRPORT MANAGER: (907) 852-0489

WEATHER DATA SOURCES: AWOS-3P 121.450 (907) 640-2124.

COMMUNICATIONS: CTAF 122.8

BARTER ISLAND RCO 122.0 (DEADHORSE RADIO)

ANCHORAGE CENTER APP/DEP CON 120.6

RADIO AIDS TO NAVIGATION: NOTAM FILE SCC.

DEADHORSE (H) (H) VOR/DME 113.9 SCC Chan 86 N70°11.95' W148°24.97' 074° 97.6 NM to fld. 54/17E.

DME unusable:

143°-190° blo 2,300'

143°-190° byd 16 NM

VOR unusable:

145°-158° blo 3,000'

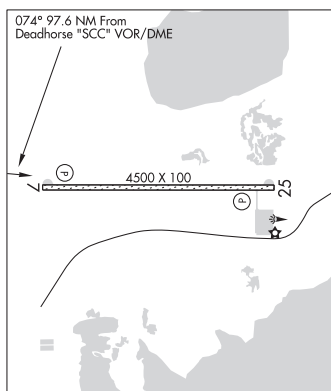
145°-158° byd 15 NM blo 4,000'

145°-158° byd 20 NM blo 5,000'

145°-158° byd 25 NM blo 6,000'

145°-158° byd 30 NM blo 10,000'

COMM/NAV/WEATHER REMARKS: Deadhorse FSS—907-659-2401 lcl.; Fairbanks FSS 1-866-248-6516.

**BARTLETT COVE SPB** (BQV) 0 NW UTC-9(-8DT) N58°27.31' W135°53.11'

JUNEAU

00 NOTAM FILE JNU

WATERWAY NW-SE: 10000X4000 (WATER)

SEAPLANE REMARKS: Unattended. 1 May-16 Sept, 3 hr docking limit, 17 Sept-30 Apr, 10 day docking limit. Wind indicator located on ferry terminal. Seaplane float exposed to westerly seas.

AIRPORT MANAGER: 907-697-2230

COMMUNICATIONS: CTAF 122.5

COMM/NAV/WEATHER REMARKS: For a toll free call to Juneau FSS dial 1-866-297-2236.

BASIN CREEK**ENGSTROM FLD** (Z47) 0 W UTC-9(-8DT) N64°40.75' W165°17.95'

NOME

143 NOTAM FILE OME

RWY 16-34: 2000X60 (GRVL-DIRT) 0.3% up N

RWY 16: Brush.

RWY 34: Brush.

AIRPORT REMARKS: Unattended. Rwy condition not monitored, recommend visual inspection prior to landing. Rwy soft during rainy season. Tall grass on rwy.

AIRPORT MANAGER: 907-443-2586

COMMUNICATIONS: CTAF 122.9

RADIO AIDS TO NAVIGATION: NOTAM FILE OME.

NOME (H) (H) VOR/DME 115.0 OME Chan 97 N64°29.11' W165°15.19' 343° 11.7 NM to fld. 95/11E.

COMM/NAV/WEATHER REMARKS: For a toll free call to Nome FSS dial 1-800-478-8400. For a toll free call to Fairbanks FSS dial 1-866-248-6516.

