

WILMINGTON AIR PARK (ILN)(KILN) 2 SE UTC-5(-4DT) N39°25.68' W83°47.53'

CINCINNATI
H-10G, L-27E
IAP, AD

1077 B ARFF Index—See Remarks NOTAM FILE ILN
RWY 04L-22R: H10701X150 (CONC-GRVD) S-100, D-200, 2S-175,
2D-390, 2D/2D2-750 PCN 84 R/C/W/T HIRL CL

RWY 04L: MALSR. PAPI(P4L)—GA 3.0° TCH 62'. RVR-TMR
RWY 22R: ALSF2. TDZL. PAPI(P4L)—GA 3.0° TCH 71'. RVR-TMR
0.4% down.

RWY 04R-22L: H9000X150 (CONC-GRVD) S-100, D-200, 2S-175,
2D-390, 2D/2D2-750 PCN 98 R/B/W/T HIRL CL
RWY 04R: PAPI(P4L)—GA 3.0° TCH 71'. RVR-TMR 0.3% up.
RWY 22L: ALSF2. TDZL. PAPI(P4L)—GA 3.0° TCH 71'. RVR-TMR
0.4% down.

RUNWAY DECLARED DISTANCE INFORMATION

RWY 04L:TORA-10701 TODA-10701 ASDA-10701 LDA-10701
RWY 04R:TORA-9000 TODA-9000 ASDA-9000 LDA-9000
RWY 22L:TORA-9000 TODA-9000 ASDA-9000 LDA-9000
RWY 22R:TORA-10701 TODA-10701 ASDA-10701 LDA-10701
SERVICE: S4 FUEL JET A OX 1, 2 LGT PAPI Rwy 04L and 22R opr
consly SS-SR. All Rwy 04R-22L lgts OTS indefly. Rwy 04L and 22R
PAPI unusbl byd 8 degs left & right of cntrln.

AIRPORT REMARKS: Attended continuously. Rwy 04R-22L CLOSED indefly.
Class IV, ARFF Index A. Index B svc avbl; clsd to skedd acr ops with
gtr than 9 pax seats. 90-day PPR for unsked acr ops gtr than 30 pax seats – call amgr 937-528-9891. Surface
movement guidance and control system not avbl. Rwy 04L-22R has 1000' paved area on southwest end and 200'
paved area on northeast end. Rwy 04R-22L has 200' paved area on each end. 4 hr PPR for all tsnt acft durg oprg hrs
and aft hrs—call 866-931-2337. Non-Comm Indg fee.

AIRPORT MANAGER: 937-366-2114

WEATHER DATA SOURCES: ASOS (937) 383-7334

COMMUNICATIONS: D-ATIS 124.925

Ⓡ COLUMBUS APP/DEP CON 118.85

TOWER 119.475 **GND CON** 121.6 **CLNC DEL** 128.85

CLEARANCE DELIVERY PHONE: For CD ctc Columbus Apch at 614-338-8537.

AIRSPACE: CLASS D.

RADIO AIDS TO NAVIGATION: NOTAM FILE ILN.

MIDWEST (T) (T) VORW/DME 112.9 MXQ Chan 76 N39°25.78' W83°48.07' at fld. 1052/4W.

VOR unusable:
051°-200°
201°-244° byd 10 NM blo 10,000'
245°-255° byd 20 NM blo 10,000'
256°-297° byd 18 NM blo 10,000'
298°-359°
300°-050° wi 3 NM
360°-022° blo 6,000'
360°-022° byd 18 NM blo 10,000'

DME unusable:
003°-024°
282°-302° byd 18 NM blo 4,000'
303°-309°
310°-320° byd 18 NM blo 6,000'
335°-340° byd 18 NM blo 6,000'

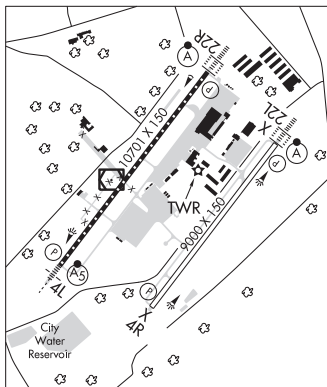
CUBLA NDB (LOMW) 299 HW N39°21.21' W83°52.55' 048° 5.9 NM to fld. 996/7W.

AIRBO NDB (MHW/LOM) 407 IL N39°29.58' W83°44.29' 220° 4.6 NM to fld. 1050/7W.

ILS 110.7 I-HWM Rwy 04L. Class IB. LOM CUBLA NDB. LOC unusable byd 15° left and right of course.

ILS 110.7 I-ILN Rwy 22R. Class IIIE. LOM AIRBO NDB.

COMM/NAV/WEATHER REMARKS: Emergency frequency 121.5 not avbl at twr.



WOOD CO (See BOWLING GREEN on page 263)