

CHICAGO/WEST CHICAGO**DUPAGE** (DPA)(KDPA) 29 W UTC-6(-5DT) N41°54.42' W88°14.88'

759 B ARFF Index—See Remarks NOTAM FILE DPA MON Airport

RWY 02L-20R: H7571X150 (CONC-GRVD) S-30, D-45 HIRL CL**RWY 02L:** MALS. TDZL RVR-T**RWY 20R:** PAPI(P4L)—GA 3.0° TCH 40'. RVR-R**RWY 02R-20L:** H6451X100 (CONC-GRVD) S-30, D-45 MIRL**RWY 02R:** Rgt t/c.**RWY 10-28:** H4750X75 (ASPH-GRVD) S-30, D-45 HIRL**RWY 10:** RLLS. REIL. VASI(V4L)—GA 3.0° TCH 50'. Bldg.**RWY 28:** REIL. PAPI(P4L)—GA 3.0° TCH 40'.**RWY 15-33:** H3399X100 (ASPH) S-30, D-45, 2D-100 MIRL**RWY 15:** REIL. PAPI(P4R)—GA 3.9° TCH 42'. Tree.**RWY 33:** REIL. Thld dspcd 190'. Tree.**SERVICE:** S4 **FUEL** 100LL, JET A **OX** 1, 2, 3, 4 **LGT** ATC—Ctl. Rwy 10 VASI unusbl byd 5° right and left of centerline.**AIRPORT REMARKS:** Attended continuously. Deer, coyote, birds and migratory waterfowl on and in/ov arpt. 100LL self service avbl 24 hrs with credit card. ARFF Index B PPR. Acft on short final to Rwy 15 are not visible from tower due to trees. Int dep Rwy 20R at Twy G has 6141 ft. U.S. Cust svc avbl PPR. User fee arpt. NOTE: See Special Notices—Arrival Alert.**AIRPORT MANAGER:** 630-584-2211**WEATHER DATA SOURCES:** ASOS (630) 587-3668 LAWRS.**COMMUNICATIONS:** ATIS 132.075 UNICOM 122.95

RCO 122.3 (KANKAKEE RADIO)

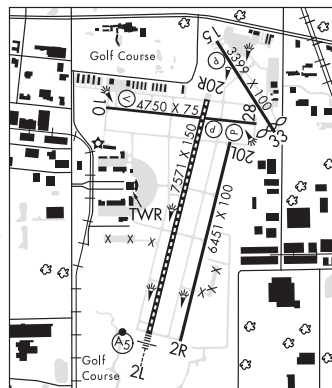
Ⓡ **CHICAGO APP/DEP CON** 133.5**TOWER** 120.9 124.5 **GND CON** 121.8 **CLNC DEL** 119.75**AIRSPACE:** CLASS D.**RADIO AIDS TO NAVIGATION:** NOTAM FILE DPA.**(L) (L) VOR/DME** 108.4 DPA Chan 21 N41°53.42' W88°21.01' 076° 4.7 NM to fld. 802/2E.

VOR unusable:

290°-310° byd 35 NM

DME unusable:

290°-340° byd 35 NM

ILS 111.7 I-GVK Rwy 02L. Class IT.**ILS** 109.5 I-DPA Rwy 10. Class IB.**COMM/NAV/WEATHER REMARKS:** Emerg frequency 121.5 not available at twr.**CHICAGO
COPTER
H-5E, L-28H, A
IAP, AD****CLINTON HELIPORT** (C26) 1 NE UTC-6(-5DT) N40°09.81' W88°56.10'

730 NOTAM FILE STL Not insp.

HELIPAD H1: H40X40 (CONC)**HELIPORT REMARKS:** TLOF 40x40 ft; FATO 100x100 ft; SA 50x50 ft; ingress/egress 090/270.**AIRPORT MANAGER:** 217-935-9438**ST LOUIS****COLES CO MEML** (See MATTOON/CHARLESTON on page 70)**COMPTON****BRESSON** (C82) 4 N UTC-6(-5DT) N41°45.75' W89°06.09'

769 TPA—1569(800) NOTAM FILE IKK

RWY 18-36: 2590X184 (TURF) LIRL(NSTD)**RWY 18:** Thld dspcd 292'. Berm.**RWY 36:** Thld dspcd 320'. Road.**SERVICE:** S4 **LGT** For LIRL Rwy 18-36 call 815-757-8840. Rwy 18-36 NSTD LIRL due to non-frangible mountings; spacing and intensity. Rwy 18-36 edge lgts OTS indefly. Rwy 18 and Rwy 36 dspcd thld lgts OTS indefly.**AIRPORT REMARKS:** Attended 1400Z†-dusk. Arpt CLOSED winter months when snow covered except for ski equipped acft. Rwy 18 and Rwy 36 dspcd thld marked with tires and lgts.**AIRPORT MANAGER:** (815) 757-8840**COMMUNICATIONS:** CTAF/UNICOM 123.0**CLEARANCE DELIVERY PHONE:** For CD ctc Chicago ARTCC at 630-906-8921.**CHICAGO****CORPORAL JASON G PAUTSCH HELIPORT** (See ROCK ISLAND on page 83)**COTTONWOOD** (See ROCKFORD on page 83)