
CRAWFORD CO (See ROBINSON on page 82)

CUSHING FLD LTD (See NEWARK on page 75)

DACY (See HARVARD on page 63)

DANVILLE
VERMILION RGNL (DNV)(KDNV) 4 NE UTC-6(-5DT) N40°11.99' W87°35.71'

CHICAGO

697 B NOTAM FILE DNV

H-5E, L-27D

RWY 03-21: H6006X100 (ASP-H-PFC) S-50, D-75, 2S-95 HIRL

IAP

0.8% up NE

RWY 03: VASI(V4L)—GA 3.0° TCH 41'. Tree.

RWY 21: MALSR. PAPI(P4L)—GA 3.0° TCH 46'.

RWY 16-34: H3999X100 (ASP-H-GRVD) S-40, D-50 MIRL

0.6% up N

RWY 16: REIL. VASI(V2L)—GA 3.0° TCH 23'.

RWY 34: REIL. VASI(V2L)—GA 3.0° TCH 14'.

RWY 12-30: 2500X150 (TURF) 0.3% up NW

SERVICE: S4 FUEL 100LL, JET A LGT HIRL Rwy 03-21 preset low intst

- to incr intst & actvt MALSR Rwy 21; REIL Rwys 16 & 34; VASI Rwys

03, 16 & 34; PAPI Rwy 21; MIRL Rwy 16-34—CTAF.

AIRPORT REMARKS: Attended 1300-0400Z†. Extv glider ops weekends. Rwy

12-30 seasonal rwy Nov 1-May 1; Ctc amgr 217-442-4624. Air

cargo Part 135 ft depts ngly 0400Z†, arrs dly 1200Z† Mon-Sat.

AIRPORT MANAGER: 217-442-4624

WEATHER DATA SOURCES: AWOS-3 119.275 (217) 442-4660.

COMMUNICATIONS: CTAF/UNICOM 122.7

 Ⓡ **CHAMPAIGN APP/DEP CON** 121.35 (1200-0500Z† other times ctc)

 Ⓡ **CHICAGO CENTER APP/DEP CON** 121.35

CLNC DEL 121.7

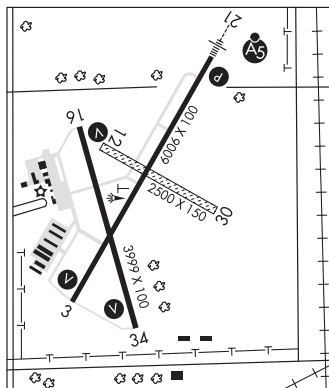
CLEARANCE DELIVERY PHONE: For CD if unable via radio ctc Champaign Apch at 217-355-4071, when Apch clsd ctc Chicago

ARTCC at 630-906-8921

RADIO AIDS TO NAVIGATION: NOTAM FILE DNV.

DANVILLE (L) TACAN Chan 47 DNV (111.0) N40°17.63' W87°33.44' 195° 5.9 NM to fld. 699/2E.

JULIP NDB (LOMW) 332 DN N40°17.38' W87°31.80' 209° 6.2 NM to fld. 706/0E.

ILS 108.5 I-DNV Rwy 21. Class IE. LOM JULIP NDB. Unmonitored.


DANVILLE N40°17.63' W87°33.44' NOTAM FILE DNV.

CHICAGO

(L) TACAN 111.0 DNV Chan 47 195° 5.9 NM to Vermilion Rgnl. 699/2E.

H-5E, 4H, L-27D