

**JEFFERSON CITY MEML** (JEF)(KJEF) P (ARNG) 2 NE UTC-6(-5DT) N38°35.47' W92°09.37'

**KANSAS CITY**

549 B NOTAM FILE JEF

**H-5D, L-27B**

**RWY 12-30:** H6000X100 (CONC-GRVD) S-85, D-104, 2D-168

**IAP, AD**

PCN 32 R/D/W/T HIRL

**RWY 12:** REIL. VASI(V4L)—GA 3.5° TCH 64'.

**RWY 30:** MALSR. VASI(V4L)—GA 3.0° TCH 50'.

**RWY 09-27:** H3401X75 (CONC) S-33.5, D-44 PCN 11 R/D/W/T MIRL

**RWY 09:** REIL. PAPI(P4L)—GA 3.0° TCH 23'. Hangar.

**RWY 27:** REIL. PAPI(P4L)—GA 3.0° TCH 29'. Trees.

**SERVICE:** S4 **FUEL** 100LL, JET A **OX** 3, 4 **LGT** When twr clsd  
 ACTIVATE MALSR Rwy 30; REIL Rwy 12, 27; HIRL Rwy 12-30; Twy A lghts—CTAF. VASI Rwy 12 and Rwy 30 opr continuously. **MILITARY—FUEL** J8 (Mil - Avbl 1230-0000Z† Mon-Fri, 24 hr PN, C573-526-9786), A+ (avbl 1230-0230Z† Mon-Fri, 1400-0000Z† Sat-Sun and hol, C573-636-5118, OT 2 hr PN C573-680-3015.) (NC-100LL, A)

**AIRPORT REMARKS:** Attended 1230-0230Z†. Fuel avbl from 0630-2030Z†. Light to moderate bird activity invof arpt. ARFF avbl with PPR 24 hours 573-634-6469. Entrances to east and south hangars, not visible by twr.

**AIRPORT MANAGER:** 573-634-6469

**WEATHER DATA SOURCES:** ASOS 133.625 (573) 635-9266.

**COMMUNICATIONS:** CTAF 125.6 **UNICOM** 122.95

**RCO** 122.4 (COLUMBIA RADIO)

® **MIZZU APP/DEP CON** 124.375

**TOWER** 125.6 (1200-0330Z†) **GND CON** 121.7

**ARNG OPS** 41.65 142.4 242.4 **NG OPS** 118.55

**CLEARANCE DELIVERY PHONE:** For CD ctc Mizzou Apch at 417-868-5620/5619.

**AIRSPACE:** CLASS D svc 1200-0330Z†; other times CLASS E.

**VOR TEST FACILITY (VOT)** 112.0

**RADIO AIDS TO NAVIGATION:** NOTAM FILE COU.

**COLUMBIA (L) (L) VORW/DME** 110.2 COU Chan 39 N38°48.65' W92°13.10' 167° 13.5 NM to fld. 883/0E.

VOR unusable:

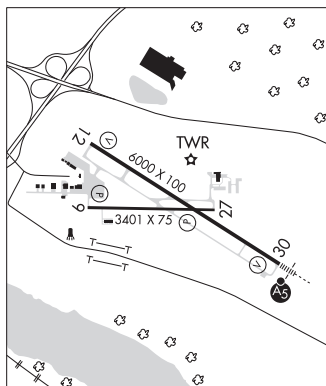
088°-101°

240°-250° byd 10NM blo 14,900'

251°-280° byd 10NM blo 11,900'

**ALGOA NDB (MHW)** 397 JE N38°32.88' W92°04.30' 304° 4.7 NM to fld. 585/1W. NOTAM FILE JEF.

**ILS/DME** 110.5 I-JEF Chan 42 Rwy 30. Class IE. LOM ALGOA NDB. ILS/DME unmonitored when ATCT closed.



**JERRY SUMNERS SR AURORA MUNI** (See AURORA on page 222)

**JESSE VIERTEL MEML** (See BOONVILLE on page 224)