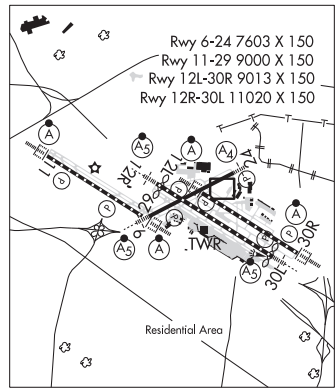


**ST LOUIS LAMBERT INTL** (STL)(KSTL) 10 NW UTC-6(-5DT) N38°44.92' W90°22.20'

**ST LOUIS**  
H-5D, L-27B, A  
IAP, DIAP, AD

617 B LRA Class I, ARFF Index D NOTAM FILE STL  
**RWY 12R-30L:** H11020X150 (CONC-GRVD) S-75, D-200, 2S-175, 2D-350, 2D/2D2-760 PCN 85 R/B/W/T HIRL CL  
**RWY 12R:** MALSR. TDZL. PAPI(P4L)—GA 3.0° TCH 71'. RVR-TR Thld dsplcd 468'. Tree. Rgt tfc.  
**RWY 30L:** MALSR. PAPI(P4R)—GA 3.0° TCH 58'. RVR-TR Thld dsplcd 201'. Tree. 0.7% down.  
**RWY 12L-30R:** H9013X150 (CONC-GRVD) S-75, D-200, 2S-175, 2D-350, 2D/2D2-760 PCN 85 R/B/W/T HIRL CL  
**RWY 12L:** ALSF2. TDZL. PAPI(P4R)—GA 3.0° TCH 56'. RVR-TMR Tree. 0.7% up.  
**RWY 30R:** ALSF2. TDZL. PAPI(P4R)—GA 3.0° TCH 55'. RVR-TMR Tree. Rgt tfc. 1.0% down.  
**RWY 11-29:** H9000X150 (CONC-GRVD) S-75, D-200, 2D-325, 2D/2D2-700 PCN 85 R/B/W/T HIRL CL  
**RWY 11:** ALSF2. TDZL. PAPI(P4R)—GA 3.0° TCH 67'. RVR-TMR Rgt tfc. 0.6% down.  
**RWY 29:** ALSF2. TDZL. PAPI(P4L)—GA 3.0° TCH 73'. RVR-TMR Tree. 0.7% up.  
**RWY 06-24:** H7603X150 (CONC-GRVD) S-75, D-176, 2S-175, 2D-280, 2D/2D2-660 PCN 85 R/B/W/T HIRL  
**RWY 06:** MALSR. PAPI(P4R)—GA 3.0° TCH 51'. RVR-TR Tree.  
**RWY 24:** MALS. PAPI(P4L)—GA 3.0° TCH 53'. RVR-TR Sign.



**RUNWAY DECLARED DISTANCE INFORMATION**

<b>RWY 06:</b> TORA-7603 TODA-7603 ASDA-7323 LDA-7323
<b>RWY 11:</b> TORA-9000 TODA-9000 ASDA-9000 LDA-9000
<b>RWY 12L:</b> TORA-9013 TODA-9013 ASDA-8956 LDA-8956
<b>RWY 12R:</b> TORA-11020 TODA-11020 ASDA-11020 LDA-10553
<b>RWY 24:</b> TORA-7603 TODA-7603 ASDA-7603 LDA-7603
<b>RWY 29:</b> TORA-9000 TODA-9000 ASDA-9000 LDA-9000
<b>RWY 30L:</b> TORA-11020 TODA-11020 ASDA-10880 LDA-10679
<b>RWY 30R:</b> TORA-9013 TODA-9013 ASDA-9013 LDA-9013

**ARRESTING GEAR/SYSTEM**

**RWY 12R** BAK-14 BAK -12B(B) (1090) BAK-14 BAK -12B(B) (1300) **RWY 30L**  
**RWY 06** BAK-14 BAK -12B(B) (1450)

**SERVICE:** S4 **FUEL** 100LL, JET A **OX 1, 2, 3, 4** **MILITARY—A-GEAR** Retractable BAK-12B(B) avbl Rwy 06, 12R, and 30L. A-G are kept in recessed posn til req for use. Twr must be notified at least 5 sec prior to engagement so that cable may be raised. **JASU 1**(AM32A-60A) **5(MA-1A)** **FUEL** 100LL **A FLUID** SP LHOX **OIL** O-128-133-(148 Mil) **SOAP**

**AIRPORT REMARKS:** Attended continuously. Fuel: A: Jet-A. Twy D or Taxilane C from Twy S to Twy G, B-747 or larger acft are not authorized to pass or be passed by B-767 or larger acft operating on the parallel Twy/Taxilane. Twy November b/n Rwy 24 and Foxtrot, rstrd to acft with a wingspan of less than 79 ft (CRJ-900 or smlr) when acft are parked on the November Pad. This area is rstrd to all ops when acft are performing end run-ups in the November Pad. Taxiway Victor, underlying the Runway 12L final approach course is restricted to aircraft with a tail height of 25' or less (CRJ-700 or smaller), when aircraft are landing on Runway 12L. Twy Charlie, east of Twy Delta One to the AER 30L, restricted to B-737 or smlr acft (wingspan less than 118 ft) when acft are parked on the Hotel pad. Taxilane Charlie, from Twy Charlie Six to Twy Delta Four, rstrd to a B757-300 series or smlr when passing bhnd acft that have made the initial 10 ft pushback. Twy A east of Twy T, Twy S and Rwy 06-24 south of Twy B, no acft or vehicle ops when arriving or departing Rwy 11 or arriving Rwy 29. Taxiway Lima, north of Runway 12L-30R, aircraft larger than a Gulfstream VI taxiing northbound are prohibited from making a right turn eastbound on Taxiway Foxtrot. Twy V2 is unavbl to B-767 or larger acft (wingspan 118' or greater). Twy V2, B-737 (wingspan greater than 79' but less than 118') must perform judgmental oversteering instead of cockpit over cntrl steering when tax. Twy K1 is unavbl to B-767 or larger acft (wingspan 118' or greater). Twy Echo, b/n Twy November and Twy Lima rstrd to B-767 or smlr acft (wingspan less than 171 ft) when acft are parked on the Echo Pad. Twy Charlie, fm Twy Sierra to Twy Charlie Seven, rstrd to B-767 or smlr acft (156 ft avbl) when acft are parked in the Charlies Pad. Rstrn is for tax acft, lgr acft may be towed thru area. Twy Charlie, from Twy Charlie Seven to Twy Charlie Six, rstrd to a B757-300 series or smlr. Wg tip clnc with gnd veh not adqt alq N side of main trml apr. ASDE-X in use. Operate transponders with altitude reporting mode and ADS-B (if equipped) enabled on all airport surfaces. Waiver to conduct simul apchs to parl rys separated by 1,300 ft in efct. Ldg fee: Ldg fee based on acft weight collected by FBO. Flight Notification Service (ADCUS) avbl.

CONTINUED ON NEXT PAGE

## CONTINUED FROM PRECEDING PAGE

**AIRPORT MANAGER:** 314-426-8000

**WEATHER DATA SOURCES:** ASOS (314) 890-4790 LAWRS. LLWAS. TDWR.

**COMMUNICATIONS:** D-ATIS 125.025 379.925 (314)890-4777 UNICOM 122.95

ST LOUIS RCO 122.6 (ST LOUIS RADIO)

Ⓡ ST LOUIS APP CON 132.125 360.6

ST LOUIS TOWER 118.5 257.7(Rwy 12R-30L) 120.05 284.6(Rwy 12L-30R, 24) 132.475 239.275(Rwy 06, 11-29)

ST LOUIS GND CON 121.9 348.6(Inbound) 121.65 377.175(Outbound) 118.925 227.125(Rwy 11-29)

GND METERING 127.55 360.2(East) 121.075 346.35(West)

CLNC DEL 119.5 363.1

Ⓡ ST LOUIS DEP CON 128.1 307.05(S/W) 119.15 335.5(N/E)

CPDLC (LOGON KUSA)

PDC

**AIRSPACE: CLASS B** See VFR Terminal Area Chart.

**VOR TEST FACILITY (VOT)** 111.0

**RADIO AIDS TO NAVIGATION:** NOTAM FILE STL.

**CARDINAL (DL) DME** 116.45 CSX Chan 111(Y) N38°45.16' W90°21.66' at fld. 556.

DME unusable:

027°-033° byd 30 NM blo 4,500'

041°-138° byd 25 NM blo 4,500'

164°-234° byd 15 NM blo 3,000'

164°-234° byd 24 NM blo 4,500'

300°-016° byd 33 NM blo 4,500'

(VH) (H) VORTACW 117.4 STL Chan 121 N38°51.64' W90°28.94' 141° 8.5 NM to fld. 446/1E.

VOR unusable:

006°-016° byd 40 NM blo 7,000'

006°-016° byd 62 NM

017°-038° byd 40 NM

039°-049° byd 40 NM blo 18,000'

050°-076° byd 40 NM blo 5,000'

050°-076° byd 50 NM blo 10,000'

050°-076° byd 94 NM blo 18,000'

077°-084° byd 40 NM

085°-099° byd 40 NM blo 2,300'

085°-099° byd 69 NM blo 18,000'

100°-124° byd 40 NM

125°-135° byd 40 NM blo 18,000'

136°-147° byd 40 NM blo 6,000'

136°-147° byd 59 NM

148°-164° byd 40 NM

165°-175° byd 40 NM blo 6,500'

165°-175° byd 77 NM

176°-189° byd 105 NM

176°-189° byd 40 NM blo 14,000'

190°-207° byd 40 NM blo 8,000'

190°-207° byd 70 NM blo 11,000'

190°-207° byd 85 NM blo 18,000'

208°-218° byd 40 NM

219°-229° byd 40 NM blo 2,400'

219°-229° byd 49 NM

230°-241° byd 40 NM blo 18,000'

242°-254° byd 40 NM

255°-265° byd 40 NM blo 18,000'

266°-272° byd 40 NM

273°-286° byd 40 NM blo 7,500'

273°-286° byd 83 NM blo 18,000'

287°-291° byd 40 NM

292°-302° byd 40 NM blo 8,000'

292°-302° byd 70 NM

303°-313° byd 40 NM blo 18,000'

314°-346° byd 40 NM

347°-357° byd 40 NM blo 4,500'

347°-357° byd 65 NM blo 8,000'

347°-357° byd 79 NM

358°-005° byd 40 NM

CONTINUED ON NEXT PAGE

CONTINUED FROM PRECEDING PAGE

ILS/DME 110.3 I-JAK Chan 40 Rwy 06. Class IB. Glideslope unusable byd 3° left of course byd 7° right of course. Glideslope unusable byd 8.1 NM (byd 8.5 DME). DME also srvs Rwy 24. LOC unusable inside of .3 NM fm thr. DME unusable byd 8.5 NM blo 3,000'.

ILS/DME 111.95 I-OGZ Chan 56(Y) Rwy 11. Class IIIE.

ILS/DME 108.9 I-LDZ Chan 26 Rwy 12L. Class IIIE.

ILS/DME 109.7 I-LMR Chan 34 Rwy 12R. Class IB.

ILS/DME 110.3 I-STL Chan 40 Rwy 24. Class IC. LOC unusable byd 25° both sides. DME unusable byd 8.5 NM blo 3,000'.

ILS/DME 111.95 I-RQN Chan 56(Y) Rwy 29. Class IE.

ILS 111.5 I-BKY Rwy 30L. Class IT.

ILS/DME 111.3 I-SJW Chan 50 Rwy 30R. Class IIIE.

COMM/NAV/WEATHER REMARKS: A pre-taxi clnc program is in effect. IFR dep are req to contact St Louis Clnc Del no more than 10 minutes prior to taxi time.

**ST LOUIS DOWNTOWN** (See CAHOKIA/ST LOUIS on page 229)

**ST LOUIS RGNL** (See ALTON/ST LOUIS on page 221)

**SALEM MEML** (K33) 4 SW UTC-6(-5DT) N37°36.91' W91°36.27'

**KANSAS CITY**

1241 B TPA-2041(800) NOTAM FILE STL

L-16G

RWY 17-35: H2998X60 (ASPH) S-12.5 MIRL 0.7% up S

IAP

RWY 17: REIL. PAPI(P2L)-GA 3.0° TCH 41'.

RWY 35: REIL. PAPI(P2L)-GA 3.0° TCH 45'.

SERVICE: FUEL 100LL LGT ACTIVATE MIRL Rwy 17-35-CTAF; to increase ints and ACTIVATE REIL Rwy 17 and Rwy 35-CTAF.

AIRPORT REMARKS: Unattended. Self service fuel avbl 24 hrs.

AIRPORT MANAGER: 573-729-5900

COMMUNICATIONS: CTAF 122.9

® KANSAS CITY CENTER APP/DEP CON 128.35

CLEARANCE DELIVERY PHONE: For CD ctc Kansas City ARTCC at 913-254-8508.

RADIO AIDS TO NAVIGATION: NOTAM FILE COU.

MAPLES (L) TACAN Chan 81 MAP (113.4) N37°35.45' W91°47.31' 074° 8.9 NM to fld. 682/6E.

