

LINCOLN (LNK)(KLNK) P (ANG ARNG) 4 NW UTC-6(-5DT) N40°51.05' W96°45.55'

OMAHA

1219 B TPA—See Remarks ARFF Index—See Remarks NOTAM FILE LNK

H-5C, L-101

RWY 18-36: H12901X200 (ASPH-CONC-GRVD) S-100, D-200,

IAP, AD

2S-175, 2D-400 PCN 58 R/B/W/U HIRL
RWY 18: MALSR. PAPI(P4L)—GA 3.0° TCH 55'. RVR-TR Rgt tfc.
 0.4% down.

RWY 36: MALSR. PAPI(P4L)—GA 3.0° TCH 56'. RVR-TR

RWY 14-32: H8649X150 (ASPH-GRVD) S-80, D-170, 2S-175,
 2D-280 PCN 43 F/B/X/U MIRL

RWY 14: REIL. PAPI(P4L)—GA 3.0° TCH 48'. Thld dsplcd 363'.

RWY 32: VASI(V4L)—GA 3.0° TCH 54'. Thld dsplcd 470'. Pole.
 0.3% up.

RWY 17-35: H5801X100 (ASPH-GRVD) S-45, D-59

PCN 15 R/C/W/T MIRL 0.8% up N

RWY 17: REIL. PAPI(P4L)—GA 3.0° TCH 44'.

RWY 35: ODALS. PAPI(P4L)—GA 3.0° TCH 30'. Rgt tfc.

RUNWAY DECLARED DISTANCE INFORMATION

RWY 14: TORA-8649 TODA-8649 ASDA-8649 LDA-8286

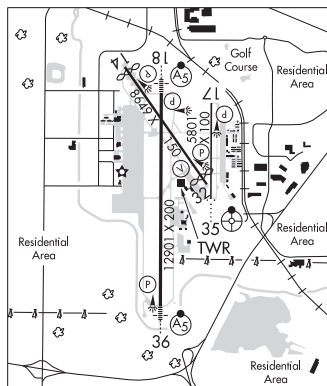
RWY 17: TORA-5800 TODA-5800 ASDA-5400 LDA-5400

RWY 18: TORA-12901 TODA-12901 ASDA-12901 LDA-12901

RWY 32: TORA-8649 TODA-8649 ASDA-8286 LDA-7816

RWY 35: TORA-5800 TODA-5800 ASDA-5800 LDA-5800

RWY 36: TORA-12901 TODA-12901 ASDA-12901 LDA-12901



SERVICE: S4 **FUEL** 100LL, JET A **OX** 1, 3, 4 **LGT** When twr clsd, MALSR Rwy 18-36 opr cont on low ints, ODALS Rwy 35 opr cont on med ints, REIL Rwy 14 opr cont on low ints, REIL Rwy 17 opr cont on medium ints, MIRL Rwy 14-32 and Rwy 17-35 opr cont on low ints, HIRL Rwy 18-36 opr cont on med ints. VASI Rwy 32, PAPI Rwy 14, Rwy 17, Rwy 18, Rwy 35 and Rwy 36 on continuously. Rwy 32 VASI unusable byd 8° left of centerline and 6° right of centerline.

MILITARY—JASU (M32A-60) (C-26) **FUEL** A++ (Mil), 100LL, A **FLUID SP OIL** O-128-133-148(Mil)

AIRPORT REMARKS: Attended continuously. Birds invof arpt. Ensure correct rwy lineup. Rwy 17-35 is the shrtr, parl rwy on the E side of arpt. Rwy 18 calm wind rwy. Rwy 32 apch holdline on South Twy A. TPA-heavy military jet 3000 (1781). PPR 24 hrs for acct parking on the west ramp, ctc arpt 402-458-2480. Class I, ARFF Index B. ARFF Index C lvl eqpt prvdd; for ARFF svc—CTAF. NOTE: See Special Notices—Arrival Alert.

MILITARY REMARKS: CSTMS/IMG Provisional port of entry: US Customs avbl only with 24 hr notice and only for DOD aircrew and DOD duty pax on travel orders. Ctc COMD POST. Space-A US Customs entry to the US at this arpt limited to active duty military personnel on leave (no dependents). **ANG** PPR/OFFL BUS for svc/prk. PPR to park on ANG ramp. AM Ops DSN 279-1293, C402-309-1293. Opr 1300-2100Z† Tue-Fri, ltd tran maint. Ctc AM Ops 234.65 20 min prior to ldg. Ctc AM Ops 234.65 for BWC. **ARNG** Opr 1300-2100Z† Tue-Fri. ARNG ramp is OFFL BUS/PPR to park ARNG ramp ctc flt OPS DSN 279-1844, C402-309-1844. **AF** USAF tmpry ops on West Ramp fr aprx Spring 2021 to Fall 2022.

AIRPORT MANAGER: 402-458-2400

WEATHER DATA SOURCES: ASOS (402) 474-9214 LLWAS.

COMMUNICATIONS: CTAF 118.5 ATIS 118.05 UNICOM 122.95

RCO 122.6 (COLUMBUS RADIO)

® **OMAHA APP/DEP CON** 124.0

TOWER 118.5 125.7 (1200 - 2200Z)† **GND CON** 121.9 **CLNC DEL** 120.7

CLEARANCE DELIVERY PHONE: For CD when ATCT is clsd ctc Omaha Apch at 402-682-4395.

AIRSPACE: CLASS C svc ctc **APP CON** svc ctc Omaha App 1200 - 2200Z†; other times CLASS E.

RADIO AIDS TO NAVIGATION: NOTAM FILE LNK.

(VH) (H) **VORTACW** 116.1 LNK Chan 108 N40°55.43' W96°44.52' 181° 4.4 NM to fld. 1370/9E.

ILS 111.1 I-OCZ Rwy 18. Class IB. OM unmonitored.

ILS 109.9 I-LNK Rwy 36. Class IA.

COMM/NAV/WEATHER REMARKS: Emerg frequency 121.5 not available at twr.