

NELIGH

ANTELOPE CO (4V9) 1 SW UTC-6(-5DT) N42°06.74' W98°02.39'

OMAHA  
L-12H  
IAP

- 1774 B NOTAM FILE OLU
- RWY 01-19: H3700X60 (CONC) MIRL
- RWY 01: PAPI(P2L)—GA 3.0° TCH 41'.
- RWY 19: PAPI(P2L)—GA 3.5° TCH 41'. Tree.
- RWY 13-31: H3310X60 (CONC) S-12.5 MIRL
- RWY 13: Thld dsplcd 405'. Road.
- RWY 31: Thld dsplcd 405'. Road.

RUNWAY DECLARED DISTANCE INFORMATION

- RWY 13: TORA-3310 TODA-3310 ASDA-3310 LDA-2905
- RWY 31: TORA-3310 TODA-3310 ASDA-3310 LDA-2905
- SERVICE: FUEL 100LL LGT ACTIVATE PAPI Rwy 01-19; MIRL Rwy 01-19—CTAF; after 0200Z‡ ACTIVATE MIRL Rwy 13-31—CTAF.

AIRPORT REMARKS: Attended Mon-Fri 1400-2300Z‡. Courtesy car avbl.

AIRPORT MANAGER: 402-887-4827

WEATHER DATA SOURCES: AWOS-3PT 119.275 (402) 887-5233.

COMMUNICATIONS: CTAF/UNICOM 122.8

Ⓜ MINNEAPOLIS CENTER APP/DEP CON 128.0

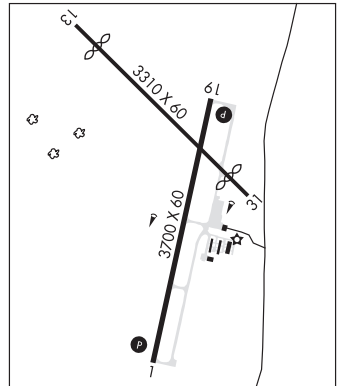
CLEARANCE DELIVERY PHONE: For CD ctc Minneapolis ARTCC at 651-463-5588.

RADIO AIDS TO NAVIGATION: NOTAM FILE ONL.

Ⓜ NEILL (H) (H) VORTACW 113.9 ONL Chan 86 N42°28.23'

W98°41.22' 116° 35.9 NM to fld. 2028/10E.

COMM/NAV/WEATHER REMARKS: UNICOM unmon.



NORFOLK RGNL/KARL STEFAN MEML FLD (OFK)(KOFK) 3 SW UTC-6(-5DT) N41°59.13'

OMAHA  
H-5C, L-12H  
IAP, AD

- W97°26.11'
- 1573 B NOTAM FILE OFK MON Airport

RWY 14-32: H5806X100 (ASPH-PFC) S-75, D-192, 2S-175, 2D-400 MIRL 0.4% up SE

- RWY 14: PAPI(P4L)—GA 3.0° TCH 40'. Thld dsplcd 287'. Railroad.
- RWY 32: REIL. PAPI(P4L)—GA 3.5° TCH 49'. Thld dsplcd 360'. Tree.
- RWY 02-20: H5801X100 (ASPH-PFC) S-60, D-192, 2D-360 HIRL
- RWY 02: MALSR. PAPI(P4L)—GA 3.0° TCH 49'. Fence.
- RWY 20: REIL. PAPI(P4L)—GA 3.0° TCH 40'. Thld dsplcd 297'. Tree.

RUNWAY DECLARED DISTANCE INFORMATION

- RWY 14: TORA-5443 TODA-5800 ASDA-5443 LDA-5160
- RWY 32: TORA-5517 TODA-5800 ASDA-5517 LDA-5160
- SERVICE: S4 FUEL 100LL, JET A LGT ACTIVATE MALSR Rwy 02; REIL Rwys 20 & 32; PAPI Rwys 02, 20, 14 & 32; HIRL Rwy 02-20; MIRL Rwy 14-32—CTAF.

AIRPORT REMARKS: Attended Mon-Fri 1300-0100Z‡; Sat 1300-2300Z‡;

Sun 1600-2300Z‡. For svc after hrs call 402-841-5130 or 402-992-7914. Self svc fuel avbl 24 hrs for 100LL only. Rwy 20 dsdgn as the calm wind rwy. All rwys have left hand tfc only.

AIRPORT MANAGER: 402-841-5130

WEATHER DATA SOURCES: ASOS 119.025 (402) 644-4480.

COMMUNICATIONS: CTAF/UNICOM 122.7

RCO 122.3 (COLUMBUS RADIO)

Ⓜ MINNEAPOLIS CENTER APP/DEP CON 125.025

CLEARANCE DELIVERY PHONE: For CD if una to ctc on FSS freq, ctc Minneapolis ARTCC at 651-463-5588.

AIRSPACE: CLASS E.

RADIO AIDS TO NAVIGATION: NOTAM FILE OFK.

(L) (L) VORW/DME 114.35 OFK Chan 90(Y) N41°59.28' W97°26.07' at fld. 1539/8E.

VOR unusable:

- 170°-178° byd 30 NM
- 211°-242° byd 30 NM blo
- 276°-286° byd 15 NM

DME unusable:

- 211°-242° byd 30 NM

ILS 111.5 I-OFK Rwy 02. Class IE.

