

JERSEY SHORE (P96) 2 E UTC-5(-4DT) N41°12.39' W77°13.55'

DETROIT

554 B NOTAM FILE IPT

RWY 09-27: 3059X130 (TURF) LIRL 0.5% up W

RWY 09: Thld dsplcd 300'. Road.

SERVICE: LGT ACTIVATE LIRL Rwy 09-27, and wind indicator—CTAF. Rwy 09-27 outlined with reflectors, and rwy lgts.**AIRPORT REMARKS:** Attended on call. Deer on and invof arpt. Parl twy adj Rwy 09-27 clsd.**AIRPORT MANAGER:** 570-321-1408**COMMUNICATIONS:** CTAF/UNICOM 122.7

② NEW YORK CENTER APP/DEP CON 134.8

CLEARANCE DELIVERY PHONE: For CD ctc New York ARTCC at 631-468-1425.**JOHN MURTHA JOHNSTOWN/CAMBRIA CO** (See JOHNSTOWN on page 286)**JOHNSTOWN****JOHN MURTHA JOHNSTOWN/CAMBRIA CO** (JST)(KJST) P (ANG ARNG AR) 3 NE UTC-5(-4DT)

DETROIT

N40°18.93' W78°50.08'

H-10H, 12I, L-29D

2284 B Class I, ARFF Index A NOTAM FILE JST

IAP, DIAP, AD

RWY 15-33: H7004X150 (CONC-GRVD) S-93, D-183, 2D-357,

2D/2D2-845 PCR 630 R/B/W/T HIRL

RWY 15: VASI(V4L)—GA 3.0° TCH 52'. Trees.

RWY 33: MALSR. PAPI(P4R)—GA 3.0° TCH 53'. Trees.

RWY 05-23: H4387X100 (ASPH-GRVD) S-62, D-87, 2S-110

PCN 39 F/A/W/T MIRL

RWY 05: REIL. PAPI(P4L)—GA 3.0° TCH 44'. Trees.

RWY 23: REIL. VASI(V4L)—GA 3.0° TCH 45'. Bldg.

RUNWAY DECLARED DISTANCE INFORMATION

RWY 05: TORA-4387 TODA-4387 ASDA-4387 LDA-4387

RWY 15: TORA-7004 TODA-7004 ASDA-6698 LDA-6698

RWY 23: TORA-4387 TODA-4387 ASDA-4387 LDA-4387

RWY 33: TORA-7004 TODA-7004 ASDA-6484 LDA-6484

SERVICE: S4 FUEL 100LL, JET A LGT When twr clsd ACTVT MALSR

Rwy 33, PAPI Rwy 33, HIRL Rwy 15-33, MIRL 05-23, and all twy

lgts—CTAF. PAPI Rwy 05 unavbl when ATCT clsd. **MILITARY—FUEL A,**

A+ (1100-0400Z±, C814-361-3500; OT 3 hr PN,

C814-254-2425. \$70 fee per occurrence.) (NC-100LL)

AIRPORT REMARKS: Attended 1200-0400Z±. Deer and birds on and invof

arpt. 48 hrs PPR for unscheduled air carriers ops with more than 30 passenger seats, call arpt manager 814-536-0002.

Twy B between Rwy 05-23 and Twy B2 rstd to acft with wingspan 78 ft or less. Ldg fee.

MILITARY REMARKS: ARNG PPR ctc ARNG 1300-2130Z, 814-532-7720.**AIRPORT MANAGER:** 814-536-0002**WEATHER DATA SOURCES:** ASOS (814) 535-3511**COMMUNICATIONS:** CTAF 125.75 ATIS 118.325 UNICOM 122.95

② JOHNSTOWN APP/DEP CON 128.2 121.2 244.875 (1200-0400Z± or ctc 814-532-5960), other times ctc

CLEVELAND CENTER 124.4 327.1 (0400-1200Z±) or ctc Cleveland ARTCC at 440-774-0234.

TOWER 125.75 253.5 (1200-0400Z±) GND CON 121.6 CLNC DEL 126.85

KEYSTONE OPS ARNG 138.55 241.35 46.75

CLEARANCE DELIVERY PHONE: For CD ctc Johnstown Apch at 814-532-5960, when Apch clsd ctc Cleveland ARTCC at

440-774-0213.

AIRSPACE: CLASS D svc 1200-0400Z±; other times CLASS G.**RADIO AIDS TO NAVIGATION:** NOTAM FILE JST.

JOHNSTOWN (L) VOR/DME 113.0 JST Chan 77 N40°19.00' W78°50.05' at fld. 2279/6W.

VOR unusable:

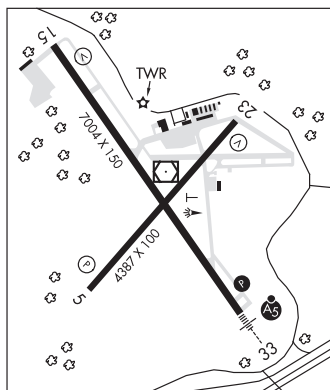
088°-102° byd 25 NM

120°-135° byd 25 NM

ILS 110.1 I-JST Rwy 33. Class IB. Glideslope unusable byd 5° left of course. Unmonitored when ATCT clsd.

COMM/NAV/WEATHER REMARKS: UNICOM frequency 122.95 avbl for ground svcs only. All tfc to ARNG ramp ctc Keystone Ops:

138.55, 241.35, 46.75, ramp deconfliction 46.75.

**JOSEPH A HARDY CONNELLSVILLE** (See CONNELLSVILLE on page 272)**KAMPEL** (See WELLSVILLE on page 317)**KEATING** N41°12.90' W78°08.57' NOTAM FILE A00.

DETROIT

(H) (H) VORTACW 116.0 ETG Chan 107 241° 15.9 NM to Clearfield—Lawrence. 2250/10W.

H-10H, L-30I