

LEWISBURG

GREENBRIER VALLEY (LWB)(KLWB) 3 N UTC-5(-4DT) N37°51.50' W80°23.97'

CINCINNATI

2302 B ARFF Index—See Remarks NOTAM FILE LWB

H-10H, 12H, L-26I

RWY 04-22: H7003X150 (ASPH-GRVD) S-90, D-120, 2S-152,

IAP, AD

2D-160 PCN 52 F/D/X/U HIRL

RWY 04: MALSR.

RWY 22: REIL.

RUNWAY DECLARED DISTANCE INFORMATION

RWY 04: TORA-7003 TODA-7003 ASDA-7003 LDA-7003

RWY 22: TORA-7003 TODA-7003 ASDA-7003 LDA-7003

SERVICE: S2 FUEL 100LL, JET A LGT ACTVT MALSR Rwy 04; REIL

Rwy 22; HIRL Rwy 04-22; twy lgts—CTAF.

AIRPORT REMARKS: Attended continuously. Birds and deer on and in/ovf arpt. Class I, ARFF Index B. PPR 24 hrs for unscheduled air carrier ops with more than 30 passenger seats call arpt manager 304-645-3961. ARFF Index C equipment avbl upon request. Rwy 04-22 edge lights are 35' fm painted rwy edge mrkgs. Rwy 04-22 usbl painted rwy width is 100' with 25' paved shoulders. Ldg fee. Multi engine only, fee waived if purchase fuel.

AIRPORT MANAGER: 304-646-7382

WEATHER DATA SOURCES: AWOS-3 121.4 (304) 645-4533.

COMMUNICATIONS: CTAF 118.9 UNICOM 122.95 ATIS 121.4 (1400-0000Z)

WASHINGTON CENTER APP/DEP CON 134.4

LEWISBURG TOWER 118.9 (1400-0000Z) GND CON 121.9

CLNC DEL 125.725 (when twr clsd)

AIRSPACE: CLASS D svc 1400-0000Z; other times CLASS G.

RADIO AIDS TO NAVIGATION: NOTAM FILE LWB.

(H) DME 116.05 LWB Chan 107(Y) N37°51.83' W80°23.51' at fld. 2338.

DME unusable:

095°-150°

151°-185° byd 20 NM blo 10,000'

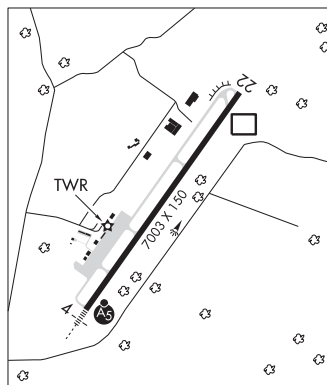
186°-196° byd 20 NM blo 7,000'

197°-094° byd 20 NM blo 10,000'

BUSHI NDB (LOM) 346 LW N37°46.94' W80°28.11' 044° 5.6 NM to fld. Autopilot cpd apch NA blw 2,770' MSL.

ILS 110.35 I-LWB Rwy 04. LOM BUSHI NDB. Autopilot cpd apch NA blw 2,770' MSL. LOC unusable 0.3 NM inbd.

COMM/NAV/WEATHER REMARKS: Use CTAF 118.9 when twr clsd. Freq 121.5 not avbl at twr. If unable to contact Washington Center on 134.4, contact Washington Center on 125.725.



LOGAN CO (6L4) 4 E UTC-5(-4DT) N37°51.34' W81°54.95'

CINCINNATI

1666 B NOTAM FILE EKN

L-26H

RWY 06-24: H3605X75 (ASPH) MIRL 0.3% up NE

IAP

RWY 06: REIL. PAPI(P2L)—GA 3.0° TCH 47'. Trees.

RWY 24: REIL. PAPI(P2L)—GA 3.0° TCH 42'. Trees.

SERVICE: S4 FUEL 100LL, JET A LGT ACTVT REIL Rwy 06 and 24; PAPI Rwy 06 and 24; MIRL Rwy 06-24—CTAF.

AIRPORT REMARKS: Attended 1400-2200Z. Deer and wildlife on and in/ovf arpt. Low Ivl C-130 mil opns in vcnty. Ck NOTAMS.

100LL fuel 24 hr self-svc. Rwy 06, 30 ft hill 800 ft from thld left. Airport access code—CTAF. Military practice rwy 1.2 miles NE of Rwy 24 end. Not charted. Wind indicator: Cntr fld windsock not ver, wind indc unrelbl. Adnl windsock at Rwy 06 and 24 ends unlgtd.

AIRPORT MANAGER: 304-752-0975

WEATHER DATA SOURCES: AWOS-3PT 119.375 (304) 752-0814.

COMMUNICATIONS: CTAF 122.9

Ⓡ CHARLESTON APP/DEP CON 119.2 (North)

INDIANAPOLIS CENTER APP/DEP CON 126.575 (South)

CLEARANCE DELIVERY PHONE: For CD ctc Charleston Apch at 304-344-5867 ext 281.

RADIO AIDS TO NAVIGATION: NOTAM FILE CRW.

CHARLESTON (H) (H) VOR/DME 117.4 HVQ Chan 121 N38°20.98' W81°46.19' 196° 30.4 NM to fld. 1099/3W.

VOR unusable:

185°-190°

240°-250°

DME unusable:

230°-240°

COMM/NAV/WEATHER REMARKS: For acft maint svcs call 304-752-0094 days, 304-946-4415 nights.

MARSHALL CO (See MOUNDSVILLE on page 405)