

PARKERSBURG

MID—OHIO VALLEY RGNL (PKB)(KPKB) P (ARNG) 6 NE UTC-5(-4DT) N39°20.70'

CINCINNATI
H-10G, 12I, L-29B
IAP, AD

W81°26.36'

859 B Class I, ARFF Index A NOTAM FILE PKB

RWY 03-21: H7240X150 (ASPH-GRVD) S-85, D-100, 2D-175

PCN 31 R/C/X/T HIRL 0.8% up NE

RWY 03: MALSR. PAPI(P4L)—GA 3.0° TCH 49'. RVR-TR

RWY 21: REIL. PAPI(P4R)—GA 3.0° TCH 56'. RVR-TR Thld dsplcd 460'.

RWY 10-28: H4002X150 (ASPH-GRVD) S-50, D-75, 2D-135

PCN 30 R/C/X/T HIRL

RWY 10: REIL. PAPI(P2L)—GA 3.0° TCH 46'.

RWY 28: REIL. PAPI(P2L)—GA 3.0° TCH 43'.

RUNWAY DECLARED DISTANCE INFORMATION

RWY 03: TORA-7240 TODA-7240 ASDA-6780 LDA-6780

RWY 10: TORA-4002 TODA-4002 ASDA-4002 LDA-4002

RWY 21: TORA-7240 TODA-7240 ASDA-7240 LDA-6780

RWY 28: TORA-4002 TODA-4002 ASDA-4002 LDA-4002

SERVICE: S2 FUEL 100LL, JET A LGT When ATCT clsd actvt MALSR

Rwy 03; REIL Rwy 10 & 21; HIRL Rwy 03-21 & 10-28—CTAF. PAPI

Rwy 03 & 21 opr consly. REIL Rwy 28 unavbl when ATCT clsd. Rwy

21 PAPI unusbl byd 5 degs left and 9 degs right of cntrln. Rwy 28 PAPI

ususbly byd 8 degs left and 8 degs right of cntrln. **MILITARY—FUEL A+,**

A, JP8 (Opr 1030-00430Z± C304-464-5113, OT 2 hr PN C304-464-5115 fee \$55.) (NC-100LL)

AIRPORT REMARKS: Attended continuously. Birds and deer on and invof arpt. PPR 30 min for unscheduled air carrier ops with more than 30 passenger seats, call arpt manager 304-464-5115. No ldg fee for acct less than 6,500 lbs. for acct greater than 6,500, ldg fee waived with fuel purchases.

AIRPORT MANAGER: 304-464-5113

WEATHER DATA SOURCES: ASOS (304) 464-1001

COMMUNICATIONS: CTAF 123.7 ATIS 124.35 UNICOM 122.95

PARKERSBURG RCO 122.2 (ELKINS RADIO)

® **INDIANAPOLIS CENTER APP/DEP CON** 125.55

PARKERSBURG TOWER 123.7 (1200-0400Z±) **GND CON** 126.45

CLEARANCE DELIVERY PHONE: When ATCT clsd, for CD ctc Indianapolis ARTCC at 317-247-2411.

AIRSPACE: CLASS D svc 1200-0400Z±; other times CLASS E.

RADIO AIDS TO NAVIGATION: NOTAM FILE PKB.

PARKERSBURG (L) (L) VOR/DME 114.45 JPU Chan 91(Y) N39°26.47' W81°22.49' 211° 6.5 NM to fld.

1016/3W.

VERSI NDB (LOMW) 388 PK N39°15.24' W81°29.10' 028° 5.9 NM to fld. 812/7W.

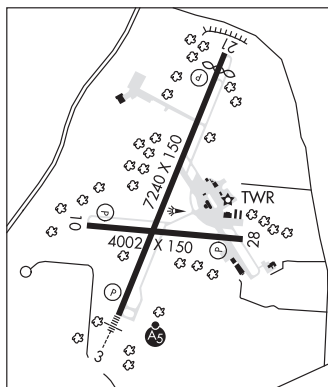
NDB unusable:

000°-094° byd 10 NM blo 3,000'

095°-149°

150°-210° byd 10 NM

ILS 110.7 I-PKB Rwy 03. Class IB. LOM VERSI NDB. LOM unmonitored.



PARKERSBURG N39°26.47' W81°22.49' NOTAM FILE PKB.

(L) (L) **VOR/DME** 114.45 JPU Chan 91(Y) 211° 6.5 NM to Mid-Ohio Valley Rgnl. 1016/3W.

RCO 122.2 (ELKINS RADIO)

CINCINNATI
H-10G, 12H, L-29B