

**PACKWOOD** (55S) 0 W UTC-8(-7DT) N46°36.23' W121°40.69'  
 1057 B NOTAM FILE SEA  
**RWY 01-19:** H2357X60 (ASPH) MIRL 0.3% up N  
**RWY 01:** Trees.  
**RWY 19:** Trees.

**SERVICE:** LGT ACTIVATE Rwy 01-19 MIRL-CTAF.  
**AIRPORT REMARKS:** Unattended. Rwy 01-19 soft shoulders both sides; use rwy for back taxi to N end.  
**AIRPORT MANAGER:** 360-864-4966  
**COMMUNICATIONS:** CTAF 122.9  
**CLEARANCE DELIVERY PHONE:** For CD ctc Seattle ARTCC at 253-351-3694.

SEATTLE

**PANGBORN MEML** (See WENATCHEE on page 288)

**PASCO**

**TRI-CITIES** (PSC)(KPSC) 2 NW UTC-8(-7DT) N46°15.88' W119°07.14'  
 410 B Class I, ARFF Index B NOTAM FILE PSC  
**RWY 03L-21R:** H7707X150 (ASPH-GRVD) S-150, D-200, 2S-175,  
 2D-400 PCR 384 F/B/X/U HIRL  
**RWY 03L:** REIL. PAPI(P4L)-GA 3.0° TCH 49'. RVR-R Tree.  
**RWY 21R:** MALSR. PAPI(P4L)-GA 3.0° TCH 54'. RVR-T Thld dsplcd  
 597'. Pole. Rgt tfc.  
**RWY 12-30:** H7704X150 (ASPH-GRVD) S-150, D-200, 2S-175,  
 2D-400 PCR 466 F/B/X/T MIRL  
**RWY 12:** REIL. VASI(V4L)-GA 3.0° TCH 56'.  
**RWY 30:** ODALS. PAPI(P4L)-GA 3.0° TCH 54'. Thld dsplcd 200'.  
 Tree.

**RWY 03R-21L:** H4423X75 (ASPH) S-52, D-85, 2S-108, 2D-108,  
 2D/2D2-150 PCN 13 F/B/X/T  
**RWY 03R:** Rgt tfc.  
**RWY 21L:** Tower.

**RUNWAY DECLARED DISTANCE INFORMATION**

<b>RWY 03L:</b> TORA-7707	TODA-7707	ASDA-7707	LDA-7707
<b>RWY 03R:</b> TORA-4423	TODA-4423	ASDA-4423	LDA-4423
<b>RWY 12:</b> TORA-7704	TODA-7704	ASDA-7504	LDA-7504
<b>RWY 21L:</b> TORA-4423	TODA-4423	ASDA-4423	LDA-4423
<b>RWY 21R:</b> TORA-7707	TODA-7707	ASDA-7707	LDA-7110
<b>RWY 30:</b> TORA-7704	TODA-7704	ASDA-7704	LDA-7504

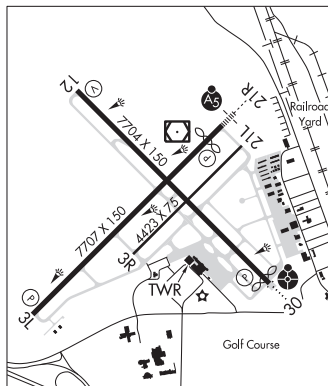
**SERVICE:** S4 **FUEL** 100LL, JET A1+ **OX 2 LGT** When twr clsd HIRL Rwy 03L-21R and MIRL Rwy 12-30 preset on low intensity to increase intensity and ACTIVATE MALSR Rwy 21R and ODALS Rwy 30-CTAF.

**AIRPORT REMARKS:** Attended 1600-0400Z. After hrs fuel call 509-547-6271 or 509-545-5524. Call out fee. Fuel 24 hour credit card svc avbl. Rwy 03R-21L sfc cracking. Waterfowl on and in vicinity of arpt spring and fall. PPR to unscheduled air carrier ops with more than 30 passenger seat call arpt manager 509-547-6352. Rwy 21L and Rwy 03R not avbl as movement area for air carrier acct with more than 9 passenger seats or greater for ldg and tkf. Rwy 03R-21L is avbl for air carrier acct for taxiing during dalgt and VFR conditions only. Twy G, G1 & E2 ltd to use by acct up to 100,000 lbs and less than 20 ft main gear wid.

**AIRPORT MANAGER:** 509-547-6352  
**WEATHER DATA SOURCES:** ASOS (509) 547-7379 LAWRS. SAWRS.  
**COMMUNICATIONS:** CTAF 135.3 ATIS 125.65 UNICOM 122.95  
**JUMP-OFF-JOE RCO** 122.4 (SEATTLE RADIO)

Ⓡ **SPOKANE APP/DEP CON** 128.75 (N & W) 133.15 (E & S) (1400-0600z) other times **SEATTLE CENTER** 132.6  
**TOWER** 135.3 (1400-0600z) **GND CON** 121.8 **CLNC DEL** 120.0

SEATTLE  
 H-1C, L-13A  
 IAP, AD



CONTINUED ON NEXT PAGE

## CONTINUED FROM PRECEDING PAGE

AIRSPACE: CLASS D svc 1400-0600Z±; other times CLASS E.

RADIO AIDS TO NAVIGATION: NOTAM FILE PSC.

PASCO (VL) (DH) VOR/DME 113.75 PSC Chan 84(Y) N46°16.22' W119°07.04' at fld. 406/15E.

DME unusable:

160°-172° byd 30 NM

201°-215° byd 35 NM

237°-245° byd 35 NM

VOR unusable:

015°-025° byd 40 NM blo 6,000'

015°-025° byd 53 NM

026°-055° byd 40 NM

155°-185° byd 40 NM

186°-202° byd 40 NM blo 5,400'

186°-202° byd 53 NM blo 6,000'

186°-202° byd 58 NM

203°-228° byd 40 NM

229°-239° byd 40 NM blo 6,000'

229°-239° byd 50 NM

268°-285° byd 40 NM

330°-014° byd 40 NM

ILS/DME 108.7 I-PSC Chan 24 Rwy 21R. Class IE. Unmonitored when ATCT closed.

**PEARSON FLD** (See VANCOUVER on page 285)

**PELLY** N47°06.94' W119°16.47' NOTAM FILE MWH.

SEATTLE

NDB (MHW/LOM) 408 MW 324° 5.9 NM to Grant Co Intl. 1136/18E.

L-13A

**PENN COVE** N48°14.68' W122°43.47' NOTAM FILE SEA.

SEATTLE

(VL) (DH) VOR/DME 117.2 CVV Chan 119 060° 2.1 NM to Delaurentis. 200/19E.

L-1E

DME unusable:

126°-160° byd 30 NM blo 2,200'

250°-260° byd 30 NM blo 3,400'

330°-360° byd 30 NM blo 2,200'

VOR unusable:

001°-360° byd 40 NM

**PIERCE CO/THUN FLD** (See PUYALLUP on page 264)

**POINT ROBERTS AIRPARK** (1RL) 1 SW UTC-8(-7DT) N48°58.63' W123°04.75'

SEATTLE

11 NOTAM FILE SEA

RWY 16-34: 2265X125 (TURF)

RWY 16: Trees. Rgt tfc.

RWY 34: Trees.

**NOISE:** NS ABTMT procedures in effect, ctc arpt mgr for details at 778-846-4311. Tkf to the south, 15 degrees right turn for NS ABTMT. Tkf to the north, turn 30 degrees west as soon as possible.

**AIRPORT REMARKS:** Attended Mon-Fri 1700-0100Z±. When able land to the north and depart to the south. Tfc pat west of fld over water. Pkng avbl on grass area, no tie downs prvd. There is a \$10 Indg fee for visiting acft, trnst acft for ovngt tie downs is \$15 per night. Payment drop box is inside hngr on east wall. You must text for pmsn first, so that the nr of planes can be controlled on the fld. Phone nr: 778-846-4311. There is no camping on the property.

**AIRPORT MANAGER:** (778) 846-4311

**COMMUNICATIONS:** CTAF/UNICOM 122.8

**CLEARANCE DELIVERY PHONE:** For CD ctc vancouver trml at 604-586-4571.

**COMM/NAV/WEATHER REMARKS:** Boundary Bay (CZBB) ATIS avbl, 125.5 or 1-877-517-2847 Boundary Bay twr 118.1 or 127.6.

## PORT ANGELES

**PORT ANGELES SPB** (W66) 1 NE UTC-8(-7DT) N48°07.00' W123°24.79'

SEATTLE

00 NOTAM FILE SEA

**WATERWAY 11W-29W:** 3200X999 (WATER)

**SEAPLANE REMARKS:** Prkg options incl beach adj hotel or seaplane docks in marina.

**AIRPORT MANAGER:** 360-417-3437

**COMMUNICATIONS:** CTAF 122.975