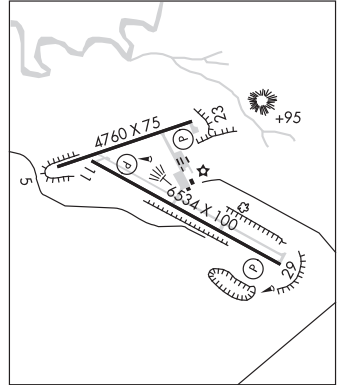


DOUGLAS

CONVERSE CO (DGW)(KDGW) 3 N UTC-7(-6DT) N42°47.83' W105°23.15'

CHEYENNE
H-3F, 5A, L-12F
IAF

4933 B NOTAM FILE DGW MON Airport
RWY 11-29: H6534X100 (ASPH) MIRL 0.4% up SE
RWY 11: REIL. PAPI(P2L)—GA 3.0° TCH 33'.
RWY 29: REIL. PAPI(P2L)—GA 3.0° TCH 45'.
RWY 05-23: 4760X75 (GRVL-DIRT) S-12.5 MIRL 0.3% up NE
RWY 23: PAPI(P2L)—GA 3.0° TCH 45'. Hiil.
SERVICE: S4 FUEL 100LL, JET A LGT ACTVT REIL Rwsy 11 and 29;
 MIRL Rwy 05-23 and 11-29 dalgt hrs-122.8. MIRL Rwy 05-23 and
 11-29 preset to low instst dark hrs, to incr instst-122.8. PAPI Rwy 11,
 23 and 29 opr consly.
AIRPORT REMARKS: Attended Mon-Fri 1330-0000Z‡, Sat-Sun
 1500-0000Z‡. Fuel after hrs see phone numbers posted in trml lobby.
 Call out fee will apply. Wildlife on and invof arpt. Retro-reflective
 markers along all twys.
AIRPORT MANAGER: 307-358-4924
WEATHER DATA SOURCES: ASOS 135.225 (307) 358-4448. Opr full-time
 0700-0659Z‡.
COMMUNICATIONS: CTAF/UNICOM 122.8
DOUGLAS RCO 122.4 (CASPER RADIO)
® DENVER CENTER APP/DEP CON 135.6
CLEARANCE DELIVERY PHONE: For CD if una to ctc on FSS freq, ctc Denver
 ARTCC at 303-651-4257.
RADIO AIDS TO NAVIGATION: NOTAM FILE DGW.
HIPSHER (VL) (DH) VORW/DME 115.75 IIP Chan 104(Y) N42°40.57' W105°13.57' 304° 10.1 NM to fld.
 4906/12E.
 VOR unusable:
 165°-309° byd 40 NM
 310°-320° byd 40 NM blo 8,300'
 310°-320° byd 53 NM
 321°-334° byd 40 NM
 335°-345° byd 40 NM blo 7,500'
 335°-345° byd 56 NM
 346°-040° byd 40 NM



DUBOIS MUNI (DUB)(KDUB) 3 NW UTC-7(-6DT) N43°32.92' W109°41.45'

SALT LAKE CITY
H-3E, L-11B

7299 B TPA—See Remarks NOTAM FILE CPR
RWY 11-29: H6700X75 (ASPH) S-24 PCN 8 F/C/Y/T MIRL
 0.9% up W
RWY 11: PAPI(P2L)—GA 3.0° TCH 42'. Fence.
RWY 29: REIL. PAPI(P2L)—GA 3.0° TCH 43'. Rgt tfc.
SERVICE: FUEL 100LL, JET A LGT ACTVT REIL Rwy 29, PAPI Rwy 11
 and Rwy 29 and MIRL Rwy 11-29—CTAF.
AIRPORT REMARKS: Unattended. Fuel avbl 24 hours self serve credit card.
 TPA—All traffic patterns to north of rwy because of mtns south.
AIRPORT MANAGER: 307-455-2100
WEATHER DATA SOURCES: AWOS-3PT 118.275 (307) 455-2211.
COMMUNICATIONS: CTAF 122.9
CLEARANCE DELIVERY PHONE: For CD ctc Salt Lake ARTCC at
 801-320-2568.
RADIO AIDS TO NAVIGATION: NOTAM FILE CPR.
BOYSEN RESERVOIR (VH) (DH) VORW/DME 117.8 BOY Chan 125
 N43°27.79' W108°17.98' 259° 61.0 NM to fld.
 7550/16E.
 VOR unusable:
 014°-035° byd 40 NM
 073°-076° byd 40 NM
 115°-120° byd 40 NM
 264°-274° byd 40 NM blo 14,000'
 264°-274° byd 81 NM
 275°-285° byd 40 NM
 357°-005° byd 40 NM

