

PRIEST RIVER MUNI (1S6) 1 N UTC-8(-7DT) N48°11.44' W116°54.59'

GREAT FALLS

2193 NOTAM FILE BOI

RWY 01-19: H2983X48 (ASPH) S-12.5 LIRL

RWY 01: Tree.

RWY 19: Trees.

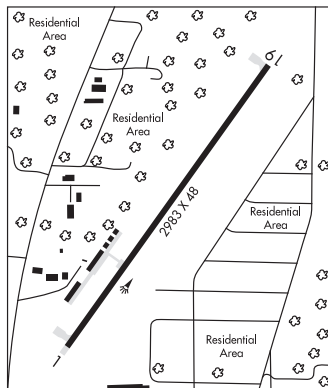
SERVICE: LGT ACTIVATE LIRL Rwy 01-19—CTAF.

AIRPORT REMARKS: Unattended. Ngt oprs recommend land Rwy 01 and dep Rwy 19. Tiedown chains removed dur winter. Irregular winter maintenance.

AIRPORT MANAGER: (208) 255-9179

COMMUNICATIONS: CTAF 122.9

CLEARANCE DELIVERY PHONE: For CD ctc Seattle ARTCC at 253-351-3694.



PULLMAN/MOSCOW RGNL (PUW)(KPUW) 3 NE UTC-8(-7DT)

N46°44.50' W117°06.70'

SEATTLE

2567 B Class I, ARFF Index B NOTAM FILE PUW

H-1C, L-13B

RWY 05-23: H7100X150 (ASPH-GRVD) S-120, D-239, 2D-385

IAP, AD

PCN 68 F/C/X/T HIRL

RWY 05: MALSR, PAPI(P4L)—GA 3.0° TCH 49'. RVR-T Fence.

RWY 23: REIL, PAPI(P4R)—GA 3.4° TCH 58'. RVR-R Ground.

RUNWAY DECLARED DISTANCE INFORMATION

RWY 05: TORA-7100 TODA-7100 ASDA-7100 LDA-7100

RWY 23: TORA-7100 TODA-7100 ASDA-7100 LDA-7100

SERVICE: S4 FUEL 100LL, JET A LGT ACTIVATE MALSR Rwy 05; REIL Rwy 23; PAPI Rwy 05 and 23; HIRL Rwy 05-23—CTAF.

AIRPORT REMARKS: Attended 1600-0200Z±. CLOSED to unscheduled air carrier ops with more than 30 pax seats exc PPR call arpt mgr 509-338-3223. Non-paved areas soft. No parking between rwy and twy and within 30' of twy to the northwest. No non-paved acft ops auth. Ldg fee for all coml acft and all itinerant acft over 7,000 lbs.

AIRPORT MANAGER: 509-338-3223

WEATHER DATA SOURCES: ASOS 135.675 (509) 334-3222.

COMMUNICATIONS: CTAF/UNICOM 122.8

RCO 122.6 (SEATTLE RADIO)

Ⓡ SEATTLE CENTER APP/DEP CON 123.95

CLEARANCE DELIVERY PHONE: For CD if una to ctc on FSS freq, ctc Seattle ARTCC at 253-351-3694.

AIRSPACE: CLASS E svc 1400-0600Z± Mon-Fri, 1700-0000Z± Sat, 1900-0600Z± Sun; other times CLASS G.

RADIO AIDS TO NAVIGATION: NOTAM FILE PUW.

(VL) (L) VORW/DME 117.15 PUW Chan 118(Y) N46°40.45' W117°13.41' 029° 6.1 NM to fld. 2772/20E. DME unmonitored.

DME unusable:

040°-045° byd 35 NM blo 8,000'

065°-070° byd 30 NM blo 7,000'

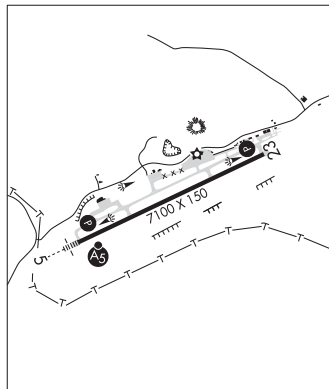
090°-095° byd 35 NM blo 7,000'

VOR unusable:

032°-100° byd 40 NM

155°-195° byd 40 NM

ILS/DME 110.35 I-PUW Chan 40(Y) Rwy 05. Class IE.



REED RANCH (See YELLOW PINE on page 91)